

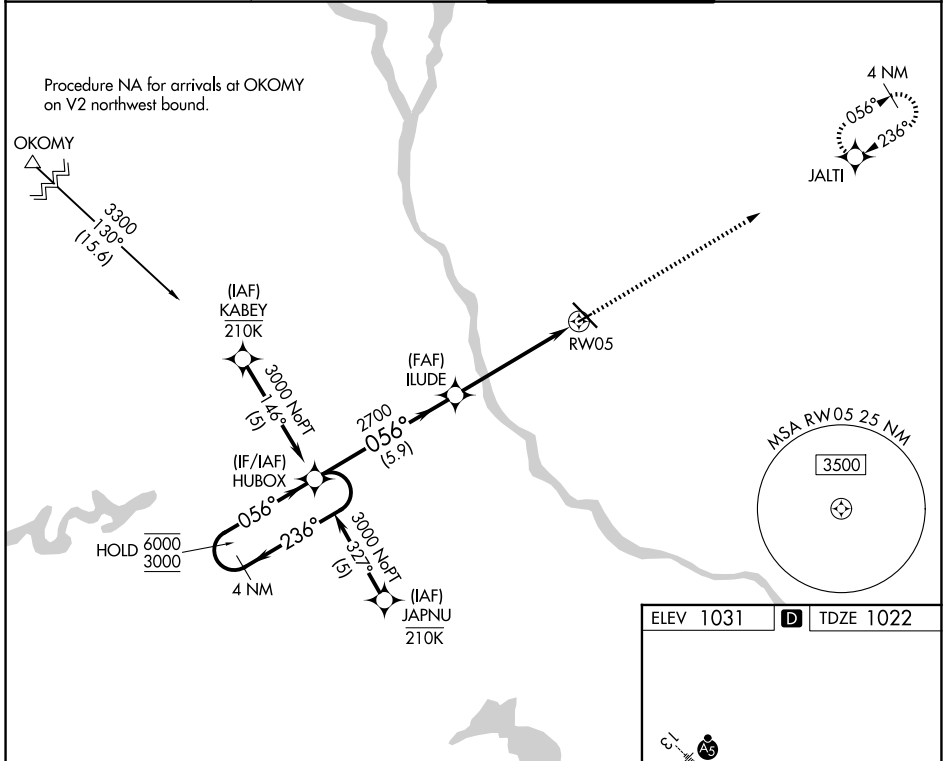
APP CRS	Rwy Ldg	<b>3000</b>
<b>056°</b>	TDZE	<b>1022</b>
	Apt Elev	<b>1031</b>

# RNAV (GPS) RWY 5

ST CLOUD SKY CENTRAL (STC)

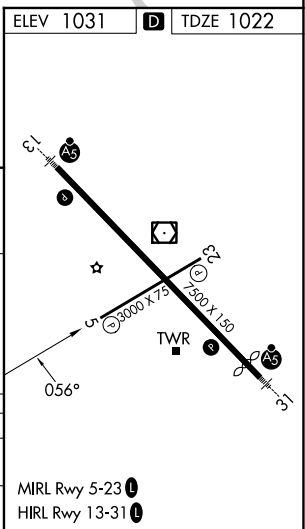
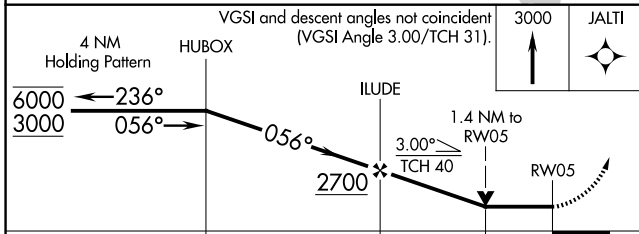
RNP APCH - GPS.	<p><b>⚠</b> Rwy 5 helicopter visibility reduction below 3/4 SM NA. When local altimeter setting not received, use Little Falls altimeter setting, increase all MDAs 80 feet and LNAV visibility Cat C 1/4 SM. VDP NA when using Little Falls altimeter setting.</p>	<p>MISSED APPROACH: Climb to 3000 direct JALTI and hold.</p>

ATIS <b>119.375</b>	MINNEAPOLIS CENTER <b>121.05 235.775</b>	ST. CLOUD TOWER * <b>118.25 (CTAF) 0</b>	GND CON <b>123.75</b>
------------------------	---	---	--------------------------



NC-1, 19 MAR 2026 to 16 APR 2026

NC-1, 19 MAR 2026 to 16 APR 2026



CATEGORY	A	B	C	D
LNAV MDA	1500-1	478 (500-1)	1500-1 3/8 478 (500-1 3/8)	NA
CIRCLING	1500-1	469 (500-1)	1620-1 1/2 589 (600-1 1/2)	NA

MIRL Rwy 5-23 **0**  
HIRL Rwy 13-31 **0**