

VORTAC PGY <b>116.45</b> Chan <b>111(Y)</b>	APP CRS <b>156°</b>	Rwy Ldg TDZE Apt Elev	<b>N/A</b> <b>N/A</b> <b>526</b>
---	------------------------	-----------------------------	--

# VOR or TACAN-A

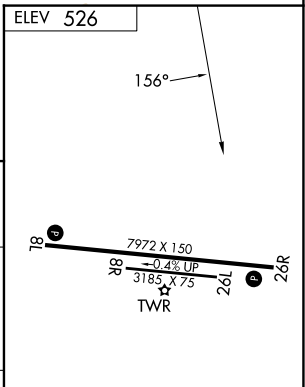
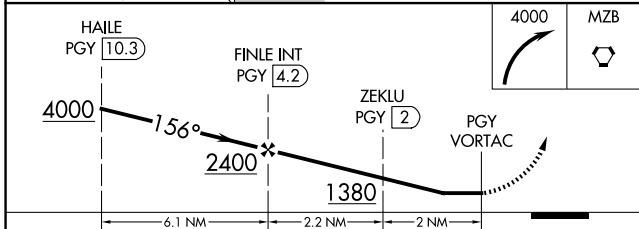
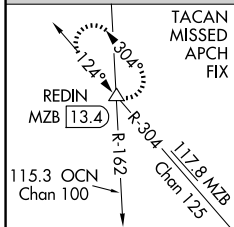
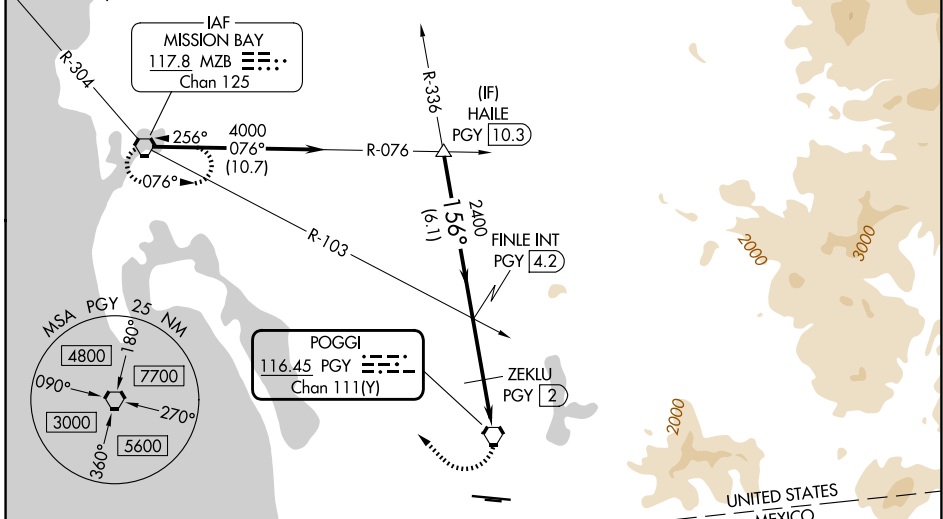
BROWN FLD MUNI (SDM)

**⚠** Circling NA south of Rwy 8R-26L.

MISSED APPROACH: Climbing right turn 4000 to MZB VORTAC and hold. (TACAN aircraft continue on MZB VORTAC R-304 to REDIN INT/MZB VORTAC 13.4 DME and hold NW, LT, 124° inbound).

ATIS <b>132.35</b>	SOCAL APP CON <b>124.35 279.625</b>	BROWN TOWER ★ <b>128.25 (CTAF) 0 225.4</b>	GND CON <b>124.4</b>	UNICOM <b>122.95</b>
-----------------------	--	---	-------------------------	-------------------------

Procedure NA for arrival on MZB VORTAC  
airway radials 076 CW 114.



CATEGORY	A	B	C	D
CIRCLING	1380-2 <sup>3</sup> / <sub>4</sub> 854 (900-2 <sup>3</sup> / <sub>4</sub> )			2260-3 1734 (1800-3)
ZEKLU FIX MINIMUMS (DME REQUIRED)				
CIRCLING	1140-2 <sup>3</sup> / <sub>4</sub> 614 (700-2 <sup>3</sup> / <sub>4</sub> )	1340-2 <sup>3</sup> / <sub>4</sub> 814 (900-2 <sup>3</sup> / <sub>4</sub> )		2260-3 1734 (1800-3)

REIL Rwy 26R  
REIL Rwy 8L  
MIRL Rwy 8R-26L  
HIRL Rwy 8L-26R

SW-3, 19 MAR 2026 to 16 APR 2026

SW-3, 19 MAR 2026 to 16 APR 2026