

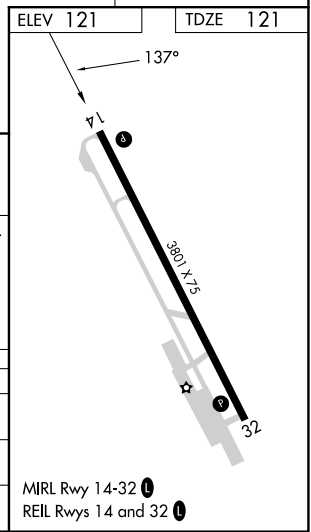
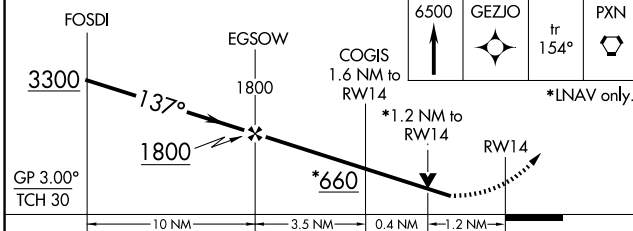
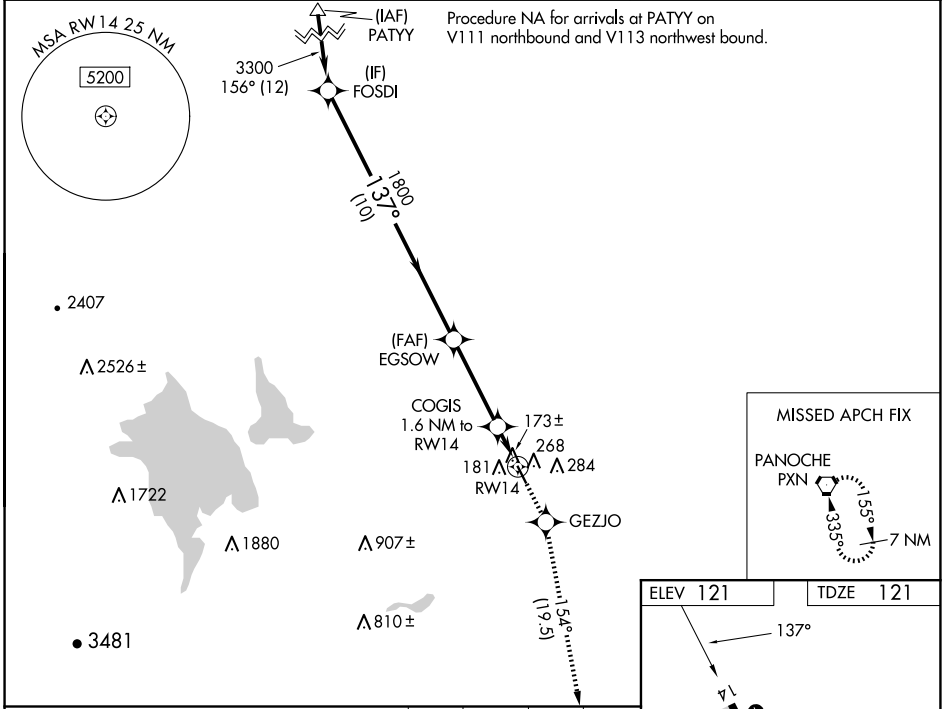
WAAS CH 53715 W14A	APP CRS 137°	Rwy Idg TDZE Apt Elev	3801 121 121
--	------------------------	-----------------------------	---

RNAV (GPS) RWY 14

LOS BANOS MUNI (LSN)

RNP APCH. ⚠️ NA Rwy 14 helicopter visibility reduction below ¼ SM NA. Baro-VNAV and VDP NA when using Merced Yosemite Rgnl altimeter setting. For uncompensated Baro-VNAV systems, LNAV/VNAV NA below -15°C or above 54°C. When local altimeter setting not received, use Merced Yosemite Rgnl altimeter setting and increase all DA/MDA 60 feet, and all visibility ¼ SM.		MISSED APPROACH: Climb to 6500 direct GEZJO and on track 154° to PXN VORTAC and hold, continue climb-in-hold to 6500.
---	--	--

AWOS-3 118,675	NORCAL APP CON 120.95 269,45	UNICOM 122.8 (CTAF) 📻
--------------------------	--	--



CATEGORY	A	B	C	D
LPV DA	455-1¼		334 (400-1¼)	
LNAV/VNAV DA	519-1½		398 (400-1½)	
LNAV MDA	520-1 399 (400-1)		520-1½ 399 (400-1½)	520-1¼ 399 (400-1¼)

SW-2, 19 MAR 2026 to 16 APR 2026

SW-2, 19 MAR 2026 to 16 APR 2026