

WAAS CH 93735 W02A	APP CRS 018°	Rwy Ldg TDZE 262 Apt Elev 262
--	------------------------	---

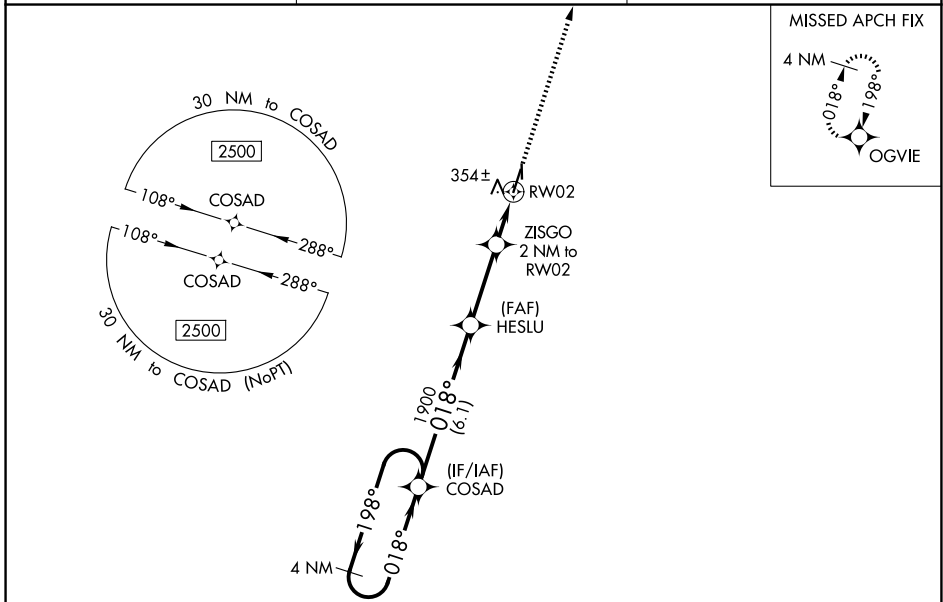
RNAV (GPS) RWY 2

KENNETT MEML (TKX)

⚠ NA Circling to Rwy 18/36 NA at night. For uncompensated Baro-VNAV systems, LNAV/VNAV NA below -16°C (4°F) or above 54°C (130°F). Circling NA west of Rws 2 and 18. DME/DME RNP-0.3 NA. When local altimeter setting not received, use Blytheville altimeter setting and increase all DA 47 feet and all MDA 60 feet; increase LNAV/VNAV visibility all Cats and LNAV Cats C/D visibility 1/8 mile; increase Circling Cat D visibility 1/4 mile. Helicopter visibility reduction below 1 SM NA. Rwy 2 Straight-in and Circling minimums NA at night.

MISSED APPROACH:
Climb to 2500 direct OGVIE and hold.

AWOS-3PT 119.05	MEMPHIS CENTER 120.075 289.4	UNICOM 122.8 (CTAF) 0
---------------------------	--	---------------------------------



NC-3, 19 MAR 2026 to 16 APR 2026

NC-3, 19 MAR 2026 to 16 APR 2026

ELEV 262		TDZE 262	
4 NM Holding Pattern		2500 OGVIE	
2500 ← 198°		↑ *LNAV only.	
018° →		*920	
GP 3.00°		RWY 2	
TCH 40		3 NM	
6.1 NM		2 NM	
CATEGORY	A	B	C
LPV DA		512-1	250 (300-1)
LNAV/VNAV DA		538-1	276 (300-1)
LNAV MDA		620-1	358 (400-1)
CIRCLING	660-1 398 (400-1)	720-1 458 (500-1)	720-1½ 458 (500-1½)
			900-2 638 (700-2)

