

WAAS CH <b>42635</b> <b>W20A</b>	APP CRS <b>198°</b>	Rwy Ldg TDZE Apt Elev	<b>5000</b> <b>262</b> <b>262</b>
--	------------------------	-----------------------------	---

# RNAV (GPS) RWY 20

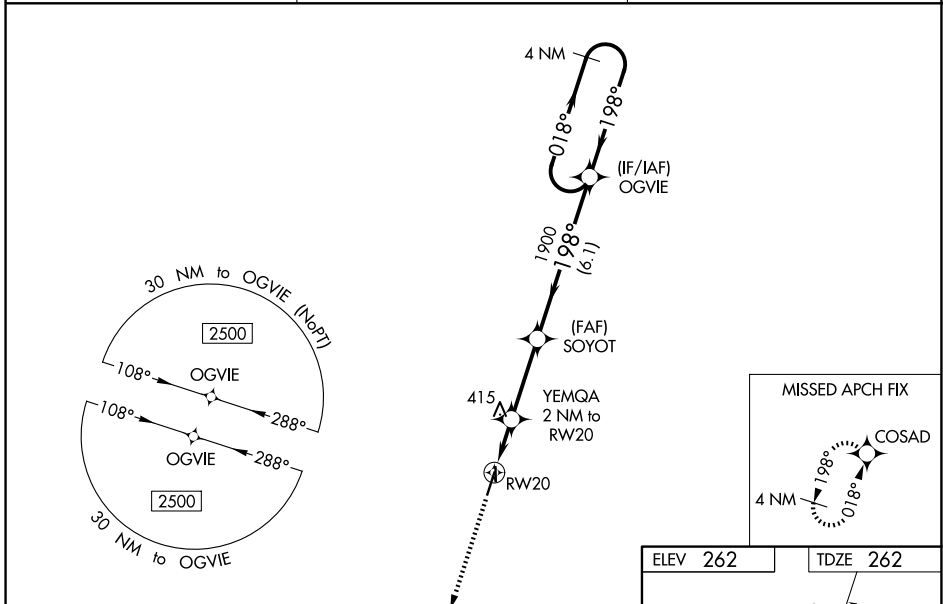
KENNETT MEML (TKX)

RNP APCH-GPS.

**NA** Circling to Rwy 18/36 NA at night. For uncompensated Baro-VNAV systems, LNAV/VNAV NA below -16°C or above 54°C. Circling NA west of Rwy 2 and 18. When local altimeter setting not received, use Blytheville altimeter setting and increase all DA 47 feet and all MDA 60 feet; increase LPV visibility 1/8 mile all Cats; increase LNAV/VNAV visibility 1/4 mile all Cats; increase LNAV Cat C/D and Circling Cat D visibility 1/4 mile. Rwy 20 helicopter visibility reduction below 3/4 SM NA. VDP and Baro-VNAV NA when using Blytheville Muni altimeter setting.

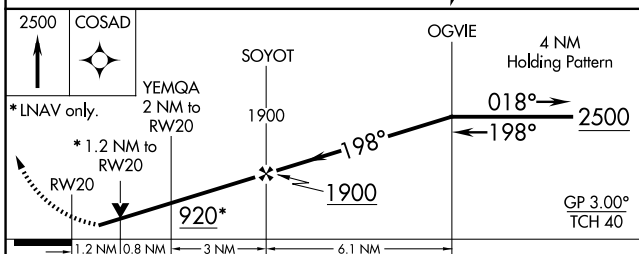
MISSED APPROACH: Climb to 2500 direct COSAD and hold.

AWOS-3PT <b>119.05</b>	MEMPHIS CENTER <b>120.075 289.4</b>	UNICOM <b>122.8 (CTAF) 0</b>
---------------------------	--	---------------------------------

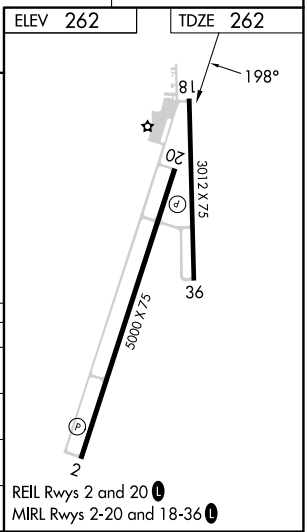


NC-3, 19 MAR 2026 to 16 APR 2026

NC-3, 19 MAR 2026 to 16 APR 2026



CATEGORY	A	B	C	D
LPV DA	554-1		292 (300-1)	
LNAV/VNAV DA	602-1 1/8		340 (400-1 1/8)	
LNAV MDA	680-1	418 (500-1)	680-1 1/8	418 (500-1 1/8)
CIRCLING	680-1 418 (500-1)	720-1 458 (500-1)	720-1 1/2 458 (500-1 1/2)	900-2 638 (700-2)



REL Rwy 2 and 20  
MIRL Rwy 2-20 and 18-36