

**(KER4.KER) 24081**  
**KERMIT FOUR DEPARTURE**

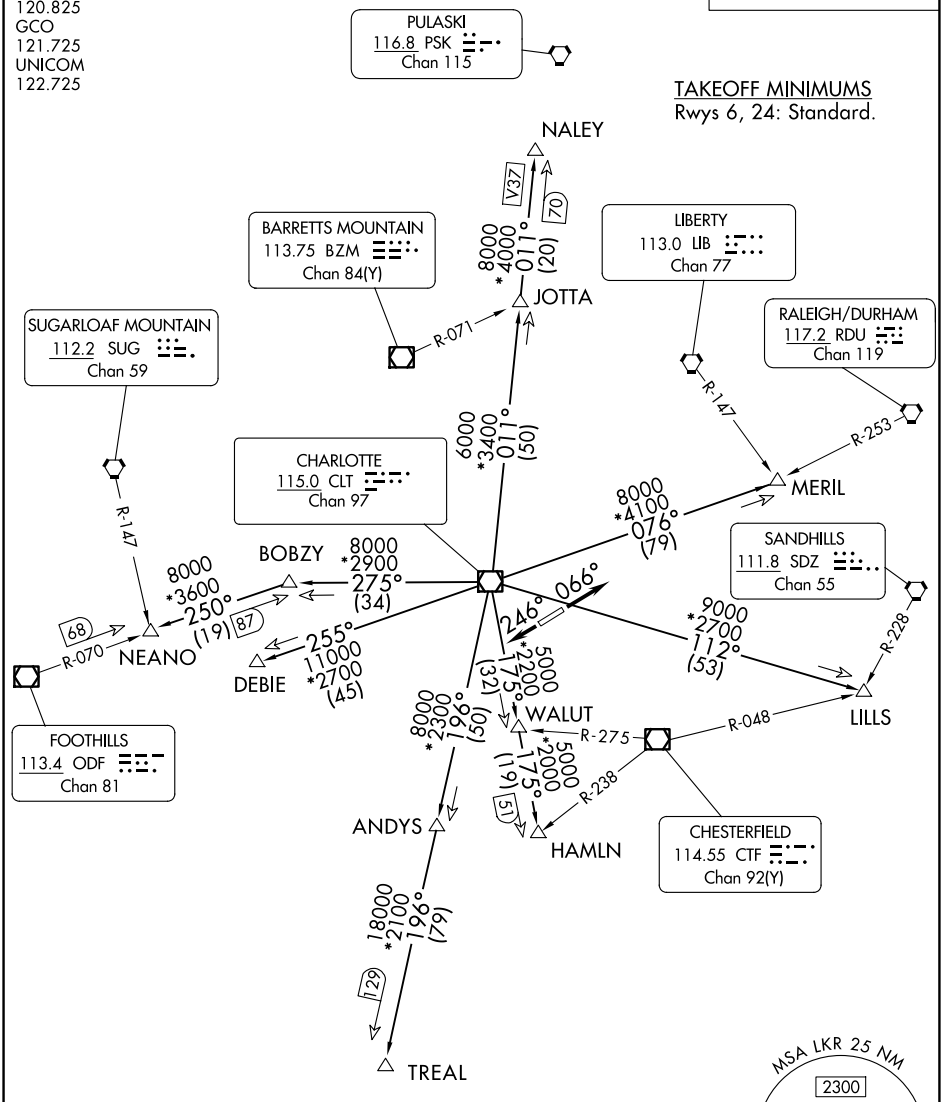
LANCASTER COUNTY-MC WHIRTER FLD (LKR)  
 AL-5853 (FAA) LANCASTER, SOUTH CAROLINA

CHARLOTTE DEP CON  
 120.05 307.8  
 AWOS-3  
 120.825  
 GCO  
 121.725  
 UNICOM  
 122.725

RADAR and DME required.

**TOP ALTITUDE:  
 3000**

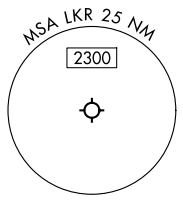
**TAKEOFF MINIMUMS**  
 Rwys 6, 24: Standard.



SE-2, 19 MAR 2026 to 16 APR 2026

SE-2, 19 MAR 2026 to 16 APR 2026

NOTE: For turbo jet aircraft only.  
 NOTE: Upon reaching 10000 MSL, accelerate to and maintain 280K, if unable advise ATC.  
 NOTE: Transponder code will be issued via Charlotte clearance delivery.



NOTE: Chart not to scale.

(CONTINUED ON FOLLOWING PAGE)

**KERMIT FOUR DEPARTURE**  
**(KER4.KER) 21MAR24**

LANCASTER, SOUTH CAROLINA  
 LANCASTER COUNTY-MC WHIRTER FLD (LKR)



DEPARTURE ROUTE DESCRIPTION

TAKEOFF RUNWAY 6: Climb on heading 066°, thence . . . .

TAKEOFF RUNWAY 24: Climb on heading 246°. Thence . . . .

. . . . on RADAR vectors to intercept filed/assigned transition or enroute fix/navaid.  
Maintain 3000, expect filed altitude/flight level 10 minutes after departure.

ANDYS TRANSITION (KER4.ANDYS): From over CLT VOR/DME on CLT R-196 to ANDYS.

DEBIE TRANSITION (KER4.DEBIE): From over CLT VOR/DME on CLT R-255 to DEBIE.

HAMLN TRANSITION (KER4.HAMLN): From over CLT VOR/DME on CLT R-175 to HAMLN.

JOTTA TRANSITION (KER4.JOTTA): From over CLT VOR/DME on CLT R-011 to JOTTA.

LILLS TRANSITION (KER4.LILLS): From over CLT VOR/DME on CLT R-112 to LILLS.

MERIL TRANSITION (KER4.MERIL): From over CLT VOR/DME on CLT R-076 to MERIL.

NALEY TRANSITION (KER4.NALEY): From over CLT VOR/DME on CLT R-011 to NALEY.

NEANO TRANSITION (KER4.NEANO): From over CLT VOR/DME on CLT R-275 to BOBZY,  
then on ODF R-070 to NEANO.

TREAL TRANSITION (KER4.TREAL): From over CLT VOR/DME on CLT R-196 to TREAL.

SE-2, 19 MAR 2026 to 16 APR 2026

SE-2, 19 MAR 2026 to 16 APR 2026