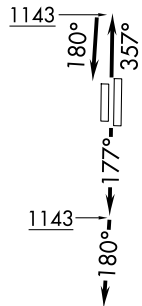


RNAV 1 - DME/DME/IRU or GPS required.  
RADAR required for non-GPS equipped aircraft.

LONE STAR DEP CON  
118.1 306.95  
CLNC DEL  
123.95  
GND CON  
123.95  
DENTON TOWER \*  
119.95 (CTAF)

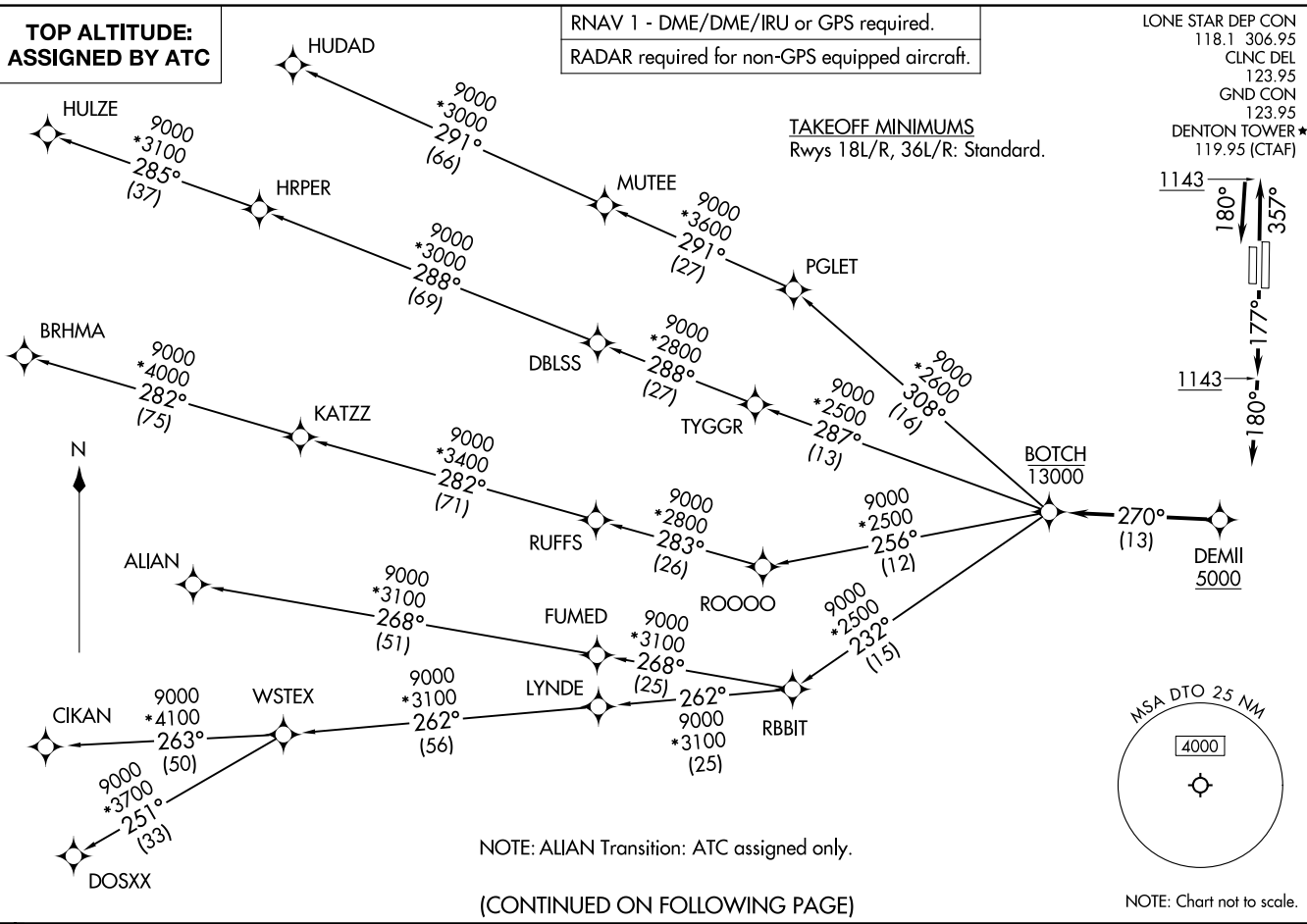
**TOP ALTITUDE:  
ASSIGNED BY ATC**

TAKEOFF MINIMUMS  
Rwys 18L/R, 36L/R: Standard.



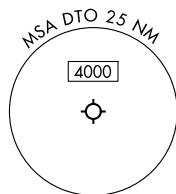
(BOTCH) .BOTCH 25107  
AL-5866 (FAA)

DENTON ENTERPRISE (D)TO  
DENTON, TEXAS



NOTE: ALIAN Transition: ATC assigned only.

(CONTINUED ON FOLLOWING PAGE)



NOTE: Chart not to scale.

BOTCH ONE DEPARTURE (RNAV)  
(BOTCH) .BOTCH 17 APR 25

DENTON ENTERPRISE (D)TO  
DENTON, TEXAS



DEPARTURE ROUTE DESCRIPTION

TAKEOFF RUNWAYS 18L/R: Climb on heading 177° to 1143, then on heading 180° or as assigned by ATC, for vectors to cross DEMIII at or above 5000, thence. . .

TAKEOFF RUNWAYS 36L/R: Climb on heading 357° to 1143, then on heading 180° or as assigned by ATC, for vectors to cross DEMIII at or above 5000, thence. . .

. . . on track 270° to cross BOTCH at or below 13000, then on (transition). Maintain ATC assigned altitude, expect filed altitude 10 minutes after departure.

ALIAN TRANSITION (BOTCH1.ALIAN)

BRHMA TRANSITION (BOTCH1.BRHMA)

CIKAN TRANSITION (BOTCH1.CIKAN)

DOSXX TRANSITION (BOTCH1.DOSXX)

HUDAD TRANSITION (BOTCH1.HUDAD)

HULZE TRANSITION (BOTCH1.HULZE)

WSTEX TRANSITION (BOTCH1.WSTEX)

SC-2, 19 MAR 2026 to 16 APR 2026

SC-2, 19 MAR 2026 to 16 APR 2026