

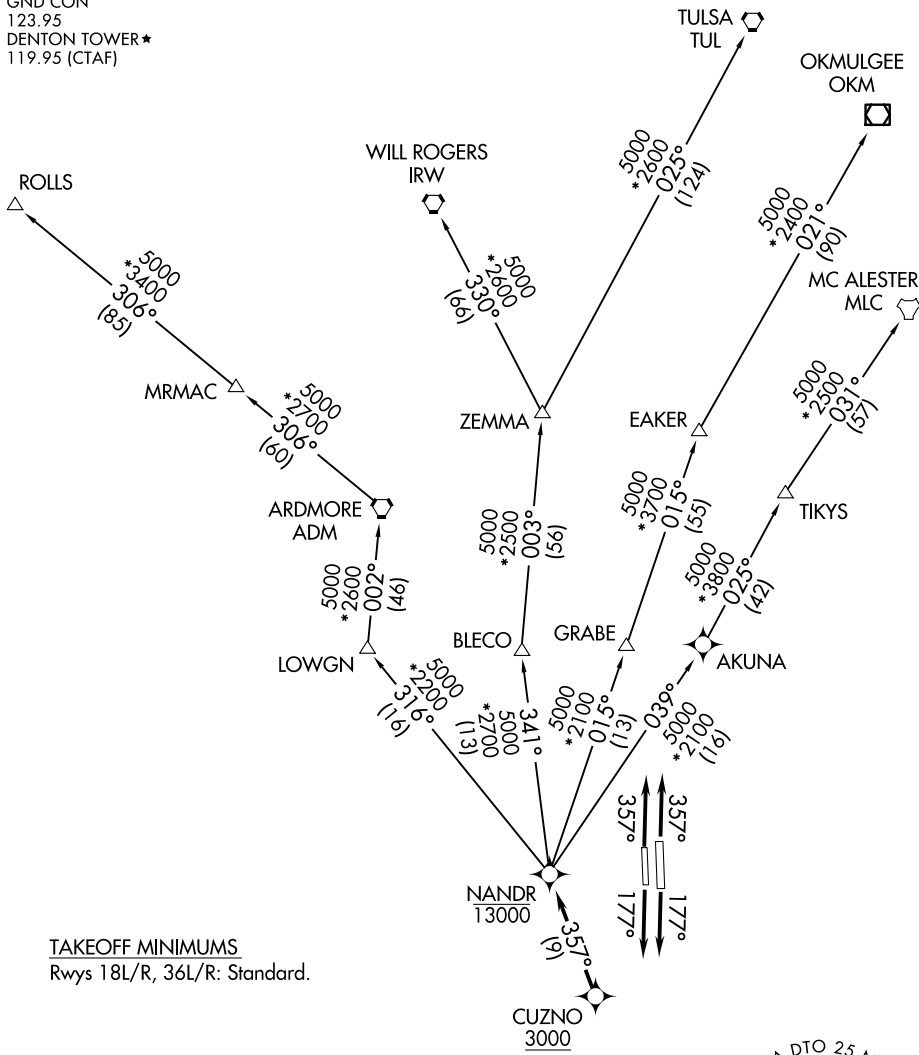
# NANDR THREE DEPARTURE (RNAV)

DENTON, TEXAS

LONE STAR DEP CON  
 118.1 306.95  
 CLNC DEL  
 123.95  
 GND CON  
 123.95  
 DENTON TOWER★  
 119.95 (CTAF)

RNAV 1 - DME/DME/IRU or GPS.  
 RADAR required.

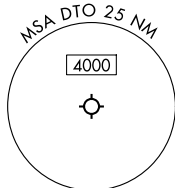
**TOP ALTITUDE:  
 ASSIGNED BY ATC**



### TAKEOFF MINIMUMS

Rwys 18L/R, 36L/R: Standard.

NOTE: EAKER Transition: For TUL terminal arrivals only.  
 NOTE: TULSA Transition: For all aircraft overflying TUL VORTAC.  
 NOTE: Aircraft arriving to the Oklahoma City terminal area, file and expect the ZEMMA enroute transition.



NOTE: Chart not to scale.

(CONTINUED ON FOLLOWING PAGE)

# NANDR THREE DEPARTURE (RNAV)

(NANDR3.NANDR) 17APR25

DENTON, TEXAS  
DENTON ENTERPRISE (D'TO)

SC-2, 19 MAR 2026 to 16 APR 2026

SC-2, 19 MAR 2026 to 16 APR 2026

# NANDR THREE DEPARTURE (RNAV)



## DEPARTURE ROUTE DESCRIPTION

TAKEOFF RUNWAYS 18L/R: Climb on heading 177° or as assigned by ATC, thence. . .

TAKEOFF RUNWAYS 36L/R: Climb on heading 357° or as assigned by ATC, thence. . .

. . .expect RADAR vectors to cross CUZNO at or above 3000, then on track 357° to cross NANDR at or below 13000, then on assigned transition.

EAKER TRANSITION (NANDR3.EAKER)

MC ALESTER TRANSITION (NANDR3.MLC)

OKMULGEE TRANSITION (NANDR3.OKM)

ROLLS TRANSITION (NANDR3.ROLLS)

TULSA TRANSITION (NANDR3.TUL)

WILL ROGERS TRANSITION (NANDR3.IRW)

ZEMMA TRANSITION (NANDR3.ZEMMA)

SC-2, 19 MAR 2026 to 16 APR 2026

SC-2, 19 MAR 2026 to 16 APR 2026