

WAAS CH 70540 W03A	APP CRS 026°	Rwy Ldg TDZE Apt Elev 4771 484 485
--	------------------------	--

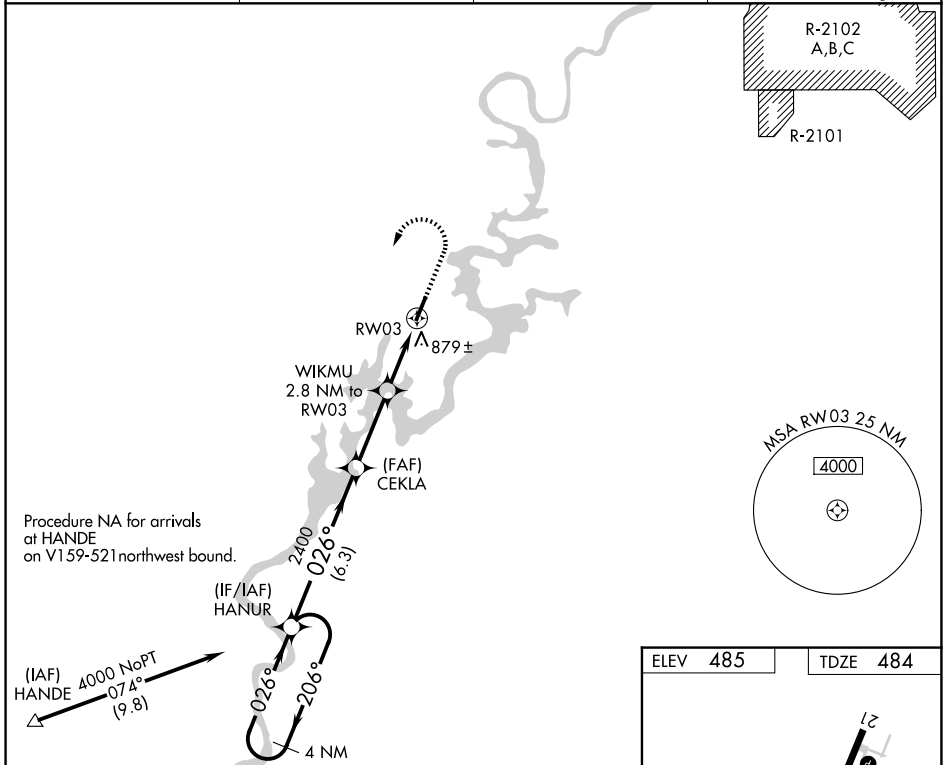
RNAV (GPS) RWY 3

ST CLAIR COUNTY (PLR)

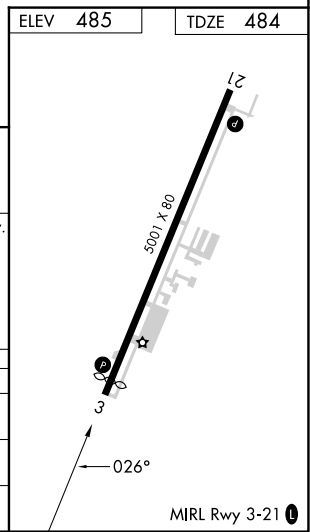
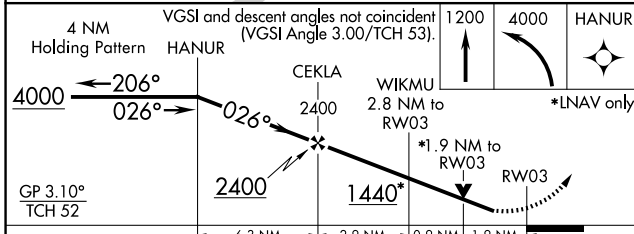
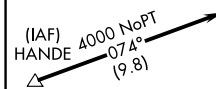
⚠ DME/DME RNP-0.3 NA. VDP NA when using Annonis altimeter setting. Rwy 3, helicopter visibility reduction below 3/4 SM NA. When local altimeter setting not received, use Annonis altimeter setting and increase all DA 63 feet and all visibility 1/4 SM, increase all MDA 80 feet and LNAV Cat C/D visibility 1/8 SM and Circling Cat C/D 1/4 SM.

MISSED APPROACH: Climb to 1200, then climbing left turn to 4000 direct HANUR and hold, continue climb-in-hold to 4000.

AWOS-3P 119.625	BIRMINGHAM APP CON 123.8 256.8	CLNC DEL 121.725 (GCO)	UNICOM 123.05 (CTAF) 0
---------------------------	--	----------------------------------	---



Procedure NA for arrivals at HANDE on V159-521 northwest bound.



CATEGORY	A	B	C	D
LPV DA	835-1 1/8		351 (400-1 1/8)	
LNAV MDA	1140-1	656 (700-1)	1140-1 7/8	656 (700-1 7/8)
CIRCLING	1180-1	695 (700-1)	1240-2 1/4 755 (800-2 1/4)	1340-2 3/4 855 (900-2 3/4)