

RNAV 1 - DME/DME/IRU or GPS.  
RADAR required.

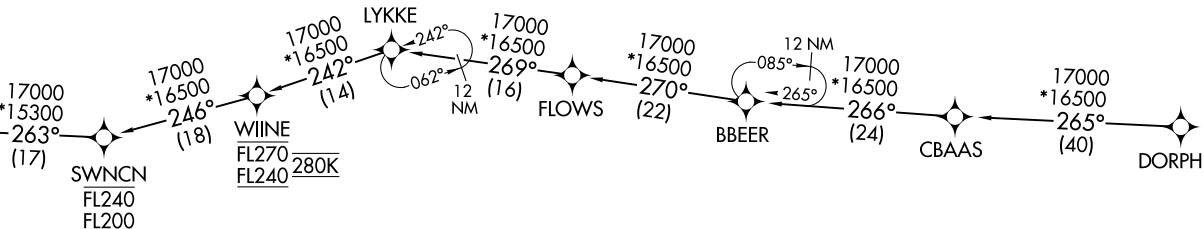
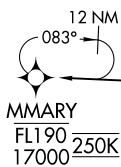
(MMARY.MMARY1) 26078  
MMARY ONE ARRIVAL (RNAV) Transition Routes  
AL-5889 (FAA)

ASPEN, COLORADO

DENVER CENTER  
128.65 282.2  
ASPEN APP CON ★  
123.8 288.3  
ASE ATIS  
120.4  
ASPEN TOWER ★  
118.85 (CTAF) 288.3



See following page for arrival routes



(MMARY.MMARY1) 17APR25

MMARY ONE ARRIVAL (RNAV) Transition Routes

ASPEN, COLORADO

NOTE: Chart not to scale.

(CONTINUED ON FOLLOWING PAGE)

DORPH TRANSITION (DORPH.MMARY1)

RNAV 1- DME/DME/IRU or GPS.  
RADAR required.

MMARY,MMARY1) 26078  
MMARY,MMARY1) 17ARR25

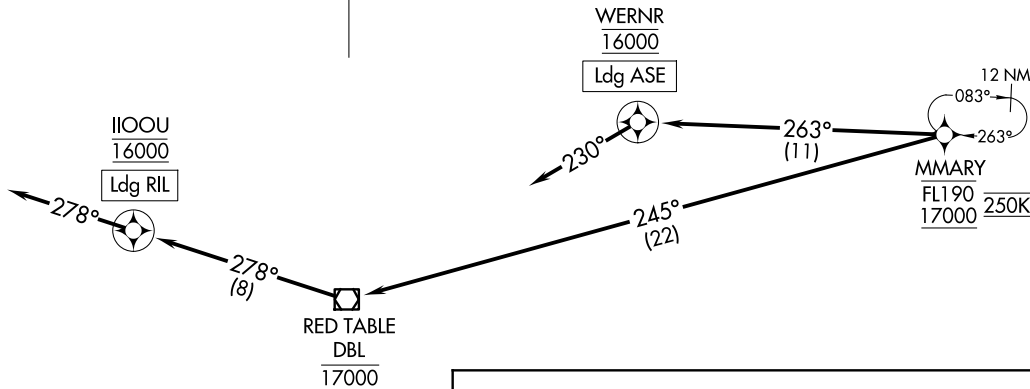
MMARY,MMARY1) 26078  
MMARY ONE ARRIVAL (RNAV) Arrival Routes

AL-5889 (FAA)

ASPEN, COLORADO

DENVER CENTER  
128.65 282.2  
ASPEN APP CON \*  
123.8 288.3  
ASE ATIS  
120.4  
ASPEN TOWER \*  
118.85 (CTAF) 288.3

N



MMARY ONE ARRIVAL (RNAV) Arrival Routes

ASPEN, COLORADO

ARRIVAL ROUTE DESCRIPTION

**LANDING ASE:** From MMARY on track 263° to cross WERNR at 16000, then on track 230°. Expect RADAR vectors to final approach course.

**LANDING RIL:** From MMARY on track 245° to cross DBL VOR/DME at 17000, then on track 278° to cross IIOOU at 16000, then on track 278°. Expect RADAR vectors to final approach course.

NOTE: Chart not to scale.