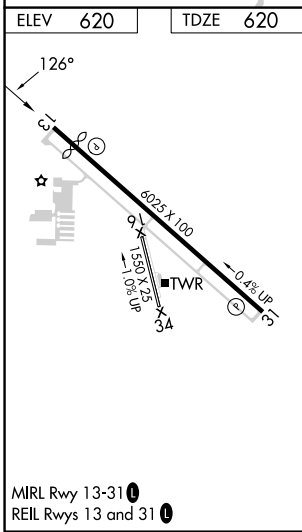
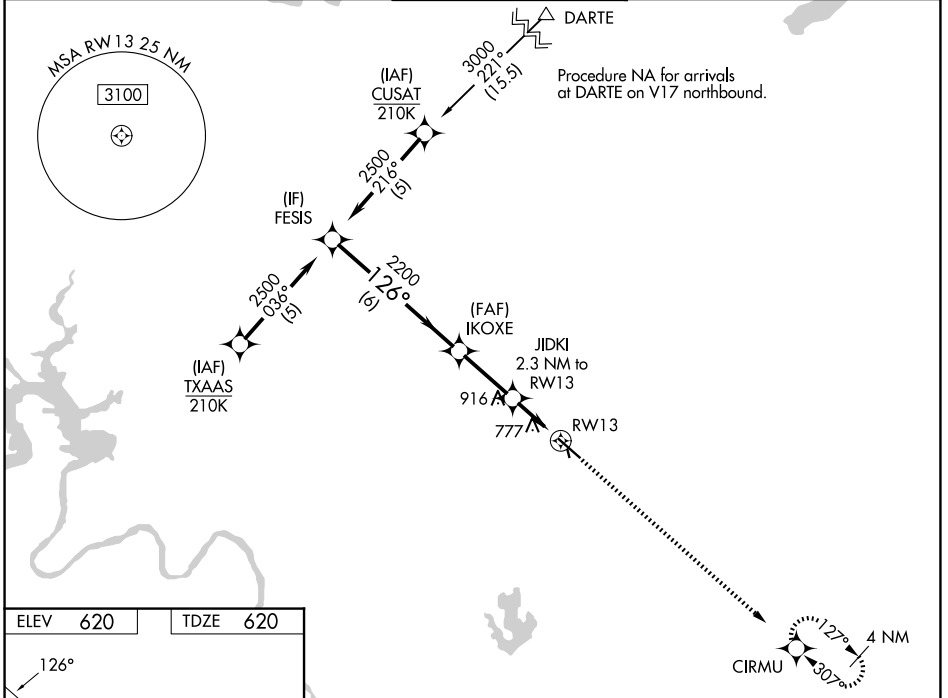


WAAS CH <b>63116</b> <b>W13A</b>	APP CRS <b>126°</b>	Rwy Ldg TDZE Apt Elev	<b>5425</b> <b>620</b> <b>620</b>
--	------------------------	-----------------------------	---

# RNAV (GPS) RWY 13

AUSTIN EXEC (EDC)

RNP APCH - GPS.		MISSED APPROACH: Climb to 2200 direct CIRMU and hold.		
<p><b>⚠</b> Circling NA to Rwy 16 and 34. Rwy 13 helicopter visibility reduction below 3/4 SM NA. For uncompensated Baro-VNAV systems, LNAV/VNAV NA below -16°C or above 54°C.</p>				
AWOS-3 <b>118.825</b>	AUSTIN APP CON <b>127.225 317.65</b>	EXECUTIVE TOWER ★ <b>120.3</b> (CTAF) <b>0</b>	GND CON <b>119.45</b>	UNICOM <b>122.975</b>



	FESIS	IKOXE	JIDKI	CIRMU
	2500	2200	1380	2200
		2.3 NM to RWY 13	1.3 NM to RWY 13	
	6 NM	2.5 NM	1 NM	1.3 NM
CATEGORY	A	B	C	D
LPV DA		870-3/4 250 (300-3/4)		
LNAV/VNAV DA		1080-1 3/8 460 (500-1 3/8)		
LNAV MDA	1080-1	460 (500-1)	1080-1 3/8	460 (500-1 3/8)
CIRCLING	1140-1 520 (600-1)	1160-1 540 (600-1)	1280-1 3/4 660 (700-1 3/4)	1280-2 660 (700-2)