

**TOP ALTITUDE:
 ASSIGNED BY ATC**

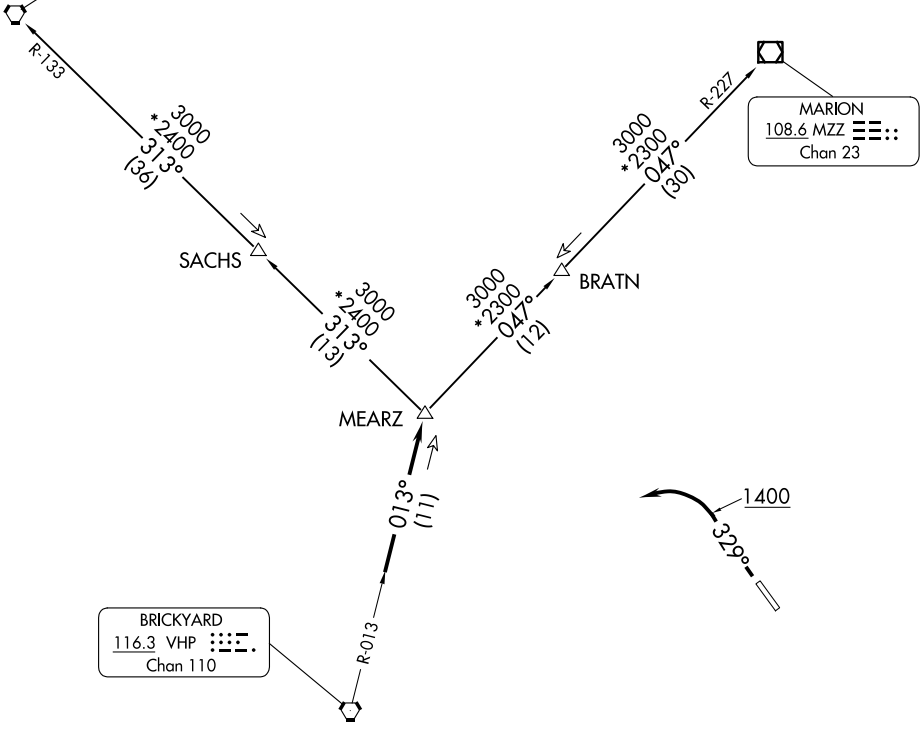
RADAR required.

AWOS-3
 119.375
 CLNC DEL
 121.625
 INDIANAPOLIS DEP CON
 127.15 317.8

BOILER
 115.1 BVT
 Chan 98

MARION
 108.6 MZZ
 Chan 23

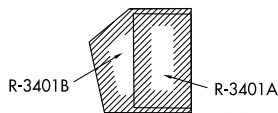
BRICKYARD
 116.3 VHP
 Chan 110



TAKEOFF MINIMUMS
 Rwy 15: NA - obstacles.
 Rwy 33: Standard.

- NOTE: Turbojets accelerate to 250K until reaching 10000, if unable advise ATC.
- NOTE: Assigned to aircraft with a requested altitude of 11000 or above.
- NOTE: Select appropriate localizer/DME frequency/channel prior to departure.

(NARRATIVE ON FOLLOWING PAGE)



NOTE: Chart not to scale.

EC-2, 19 MAR 2026 to 16 APR 2026

EC-2, 19 MAR 2026 to 16 APR 2026



DEPARTURE ROUTE DESCRIPTION

TAKEOFF RUNWAY 33: Climb on heading 329° to 1400 before turning left. Then on assigned heading to assigned altitude. Thence....

DEPARTING ALL OTHER AUTHORIZED RUNWAYS: Climb on assigned heading to assigned altitude. Thence....

....expect RADAR vectors to join VHP R-013 to MEARZ then on transition or assigned route. Expect clearance to requested altitude ten minutes after departure.

BOILER TRANSITION (MEARZ7.BVT): From over MEARZ on BVT R-133 to BVT VORTAC.

MARION TRANSITION (MEARZ7.MZZ): From over MEARZ on MZZ R-227 to MZZ VOR/DME.

EC-2, 19 MAR 2026 to 16 APR 2026

EC-2, 19 MAR 2026 to 16 APR 2026