

WAAS CH 93810 W23A	APP CRS 225°	Rwy Idg TDZE Apt Elev	4800 37 37
--	------------------------	-----------------------------	---------------------------------------

RNAV (GPS) RWY 23

WASHINGTON-WARREN (OCW)

RNP APCH-GPS.

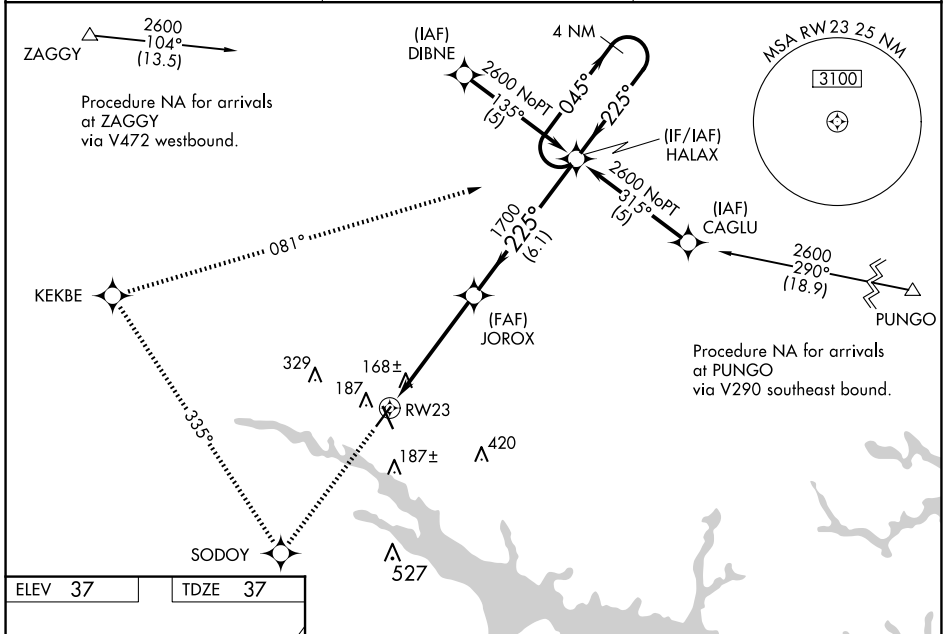
⚠ Baro-VNAV and VDP NA when using Greenville altimeter setting. For uncompensated Baro-VNAV systems, LNAV/VNAV NA below -15°C or above 54°C. When local altimeter setting not received, use Greenville altimeter setting: increase LPV DA to 478 feet and visibility 1/4 SM, and LNAV/VNAV DA to 515 feet and visibility 1/8 SM; increase all MDAs 60 feet and visibility LNAV Cat C/D 1/4 SM. Circling Rwy 17 NA at night.

MISSED APPROACH: Climb to 2600 direct SODOY and right turn via 335° track to KEKBE and right turn via 081° track to HALAX and hold.

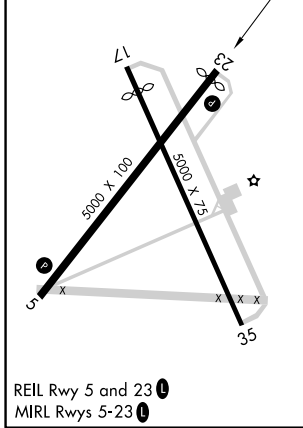
AWOS-3
120.175

CHERRY POINT APP CON
119.35 377.175

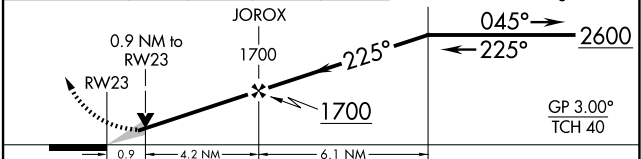
UNICOM
122.7 (CTAF) 0



ELEV 37	TDZE 37
---------	---------



2600 SODOY	KEKBE	HALAX	VGSI and RNAV glidepath not coincident (VGSI Angle 3.75/TCH 45). 4 NM Holding Pattern
↑	tr 335°	tr 081°	HALAX



CATEGORY	A	B	C	D
LPV DA		436-1 1/8	399 (400-1 1/8)	
LNAV/VNAV DA		473-1 1/4	436 (500-1 1/4)	
LNAV MDA	420-1	383 (400-1)	420-1 1/8	383 (400-1 1/8)
CIRCLING	540-1	503 (600-1)	640-1 3/4 603 (700-1 3/4)	780-2 1/2 743 (800-2 1/2)

SE-2, 19 MAR 2026 to 16 APR 2026

SE-2, 19 MAR 2026 to 16 APR 2026