

| | | |
|--|------------------------|---|
| WAAS CH 78310 W35A | APP CRS 343° | Rwy Idg 5000 TDZE 35 Apt Elev 37 |
|--|------------------------|---|

RNAV (GPS) RWY 35

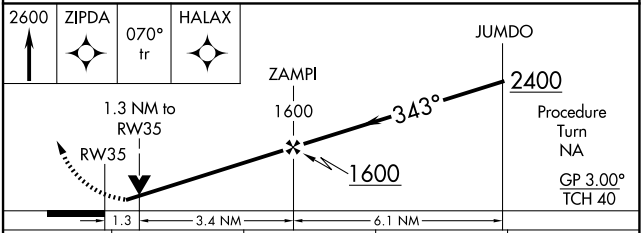
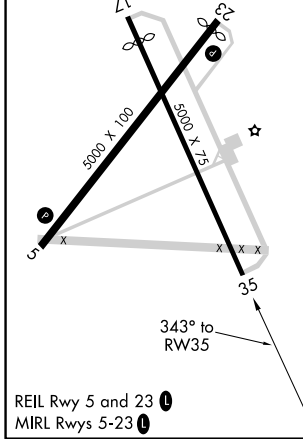
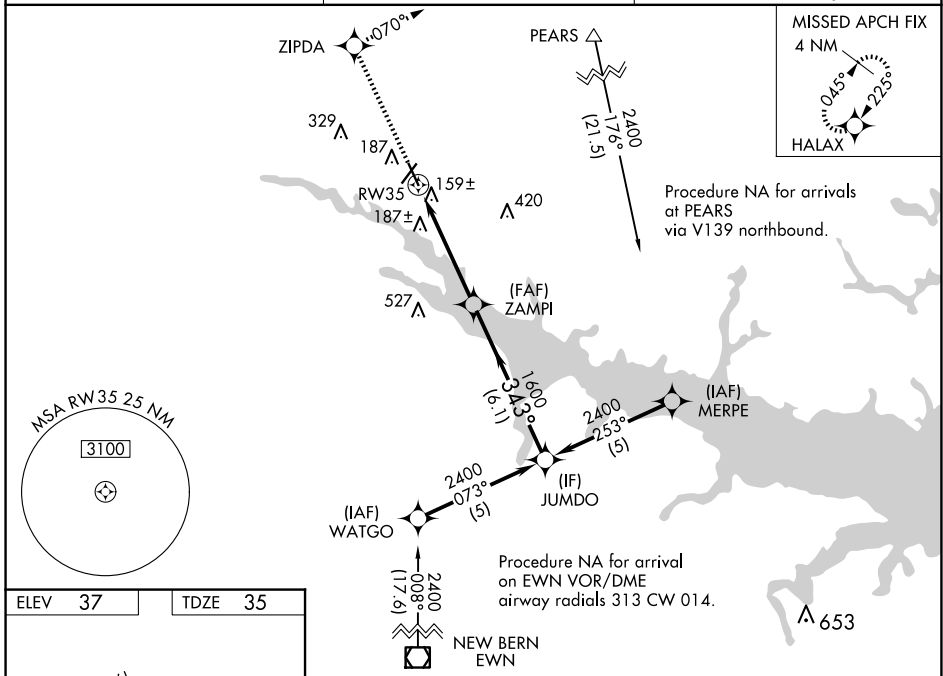
WASHINGTON-WARREN (OCW)

RNP APCH-GPS.

▼ Baro-VNAV and VDP NA when using Greenville altimeter setting. For uncompensated Baro-VNAV systems, LNAV/VNAV NA below -15°C or above 54°C. Rwy 35 helicopter visibility reduction below ¾ SM NA. When local altimeter setting not received, use Greenville altimeter setting: increase LPV DA to 401 feet, and LNAV/VNAV DA to 535 feet; increase all MDAs 60 feet and visibility LNAV Cat C/D ½ SM. Straight-in Minimums NA at night, Circling Rwy 17 NA at night.

MISSED APPROACH: Climb to 2600 direct ZIPDA and via 070° track to HALAX and hold.

| | | |
|--------------------------|---|---------------------------------|
| AWOS-3 120.175 | CHERRY POINT APP CON 119.35 377.175 | UNICOM 122.7 (CTAF) 0 |
|--------------------------|---|---------------------------------|



| CATEGORY | A | B | C | D |
|--------------|--------|-------------|------------------------|------------------------|
| LPV DA | 359-1 | | 324 (400-1) | |
| LNAV/VNAV DA | 493-1¾ | | 458 (500-1¾) | |
| LNAV MDA | 500-1 | 465 (500-1) | 500-1¾ | 465 (500-1¾) |
| CIRCLING | 540-1 | 503 (600-1) | 640-1¾ 603 (700-1¾) | 780-2½ 743 (800-2½) |

SE-2, 19 MAR 2026 to 16 APR 2026

SE-2, 19 MAR 2026 to 16 APR 2026