

APP CRS	Rwy Ldg	3503
346°	TDZE	665
	Apt Elev	665

RNAV (GPS) RWY 35

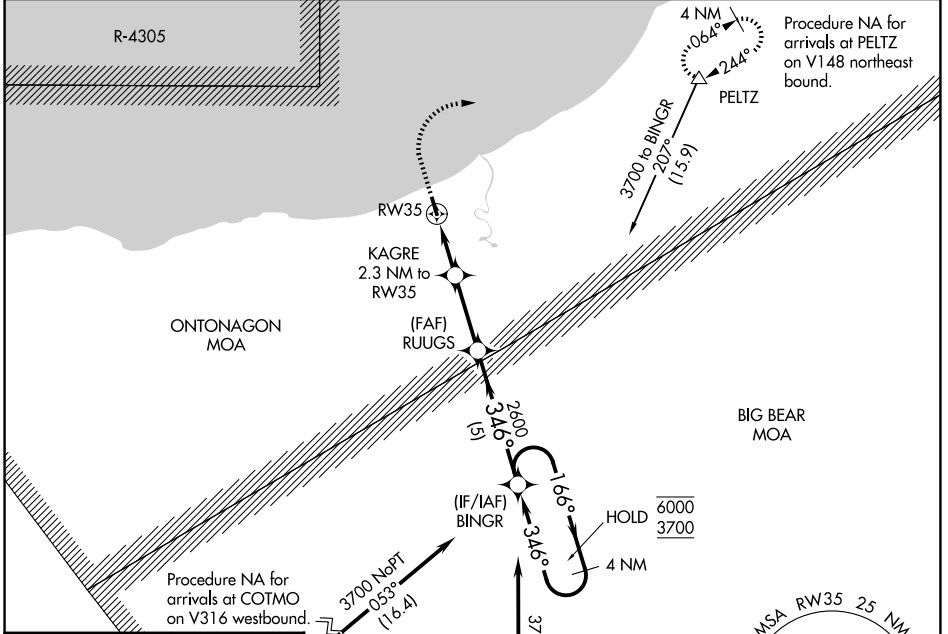
ONTONAGON COUNTY/SCHUSTER FLD (OGM)

RNP APCH - GPS.

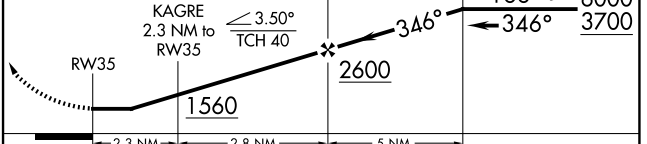
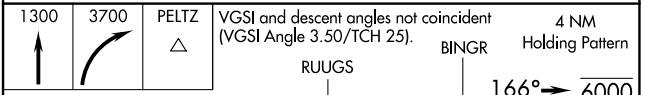
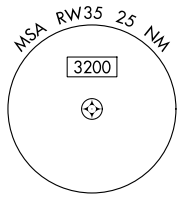
▽ Rwy 35 helicopter visibility reduction below 1 SM NA.
▲ NA Procedure NA at night. Use CMX altimeter setting.

MISSED APPROACH: Climb to 1300 then climbing right turn to 3700 direct PELTZ and hold, continue climb-in-hold to 3700.

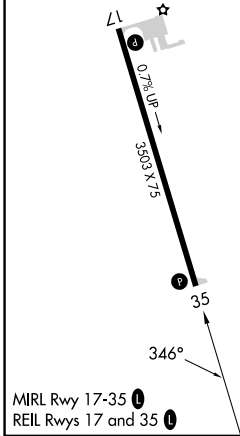
CMX ASOS 125.675	MINNEAPOLIS CENTER 133.55 379.1	CTAF 122.9
----------------------------	---	----------------------



ELEV 665	TDZE 665
----------	----------



CATEGORY	A	B	C	D
LNAV MDA	1280-1	615 (700-1)	1280-1¾ 615 (700-1¾)	NA
CIRCLING	1320-1	655 (700-1)	1420-2¼ 755 (800-2¼)	NA



EC-1, 19 MAR 2026 to 16 APR 2026

EC-1, 19 MAR 2026 to 16 APR 2026