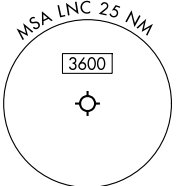


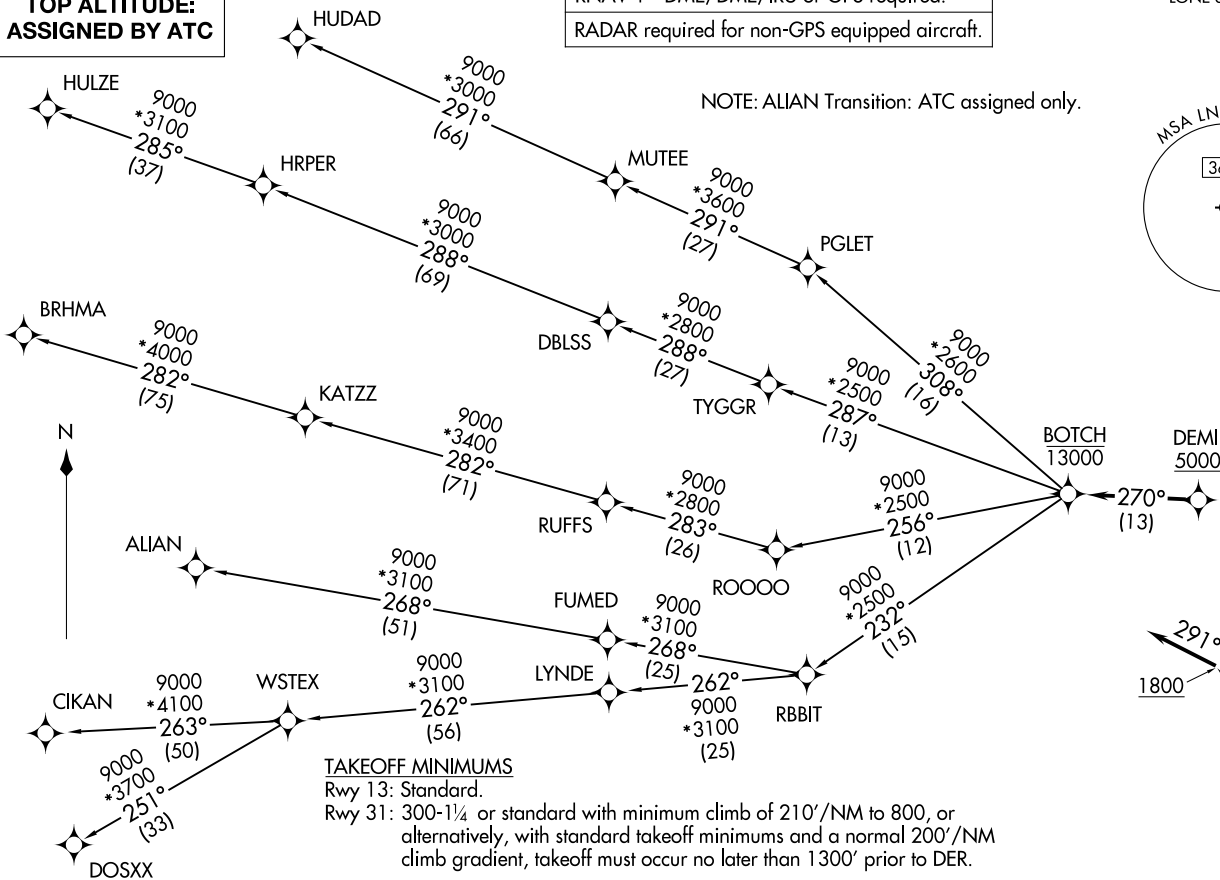
RNAV 1 - DME/DME/IRU or GPS required.  
 RADAR required for non-GPS equipped aircraft.

LONE STAR DEP CON  
 125.2 343.65  
 CTAF  
 122.7



NOTE: ALIAN Transition: ATC assigned only.

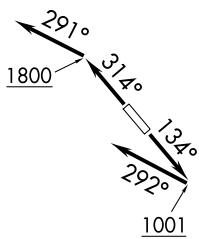
**TOP ALTITUDE:  
 ASSIGNED BY ATC**



**TAKEOFF MINIMUMS**

Rwy 13: Standard.  
 Rwy 31: 300-1¼ or standard with minimum climb of 210'/NM to 800, or alternatively, with standard takeoff minimums and a normal 200'/NM climb gradient, takeoff must occur no later than 1300' prior to DER.

(CONTINUED ON FOLLOWING PAGE)



NOTE: Chart not to scale.

BOTCH ONE DEPARTURE (RNAV)  
 (BOTCH1 .BOTCH) 17ZAPR25

LANCASTER, TEXAS  
 LANCASTER RGNL (LNC)

(BOTCH1 .BOTCH) 25107  
 BOTCH ONE DEPARTURE (RNAV)

AL-5936 (FAA)  
 LANCASTER RGNL (LNC)  
 LANCASTER, TEXAS

# BOTCH ONE DEPARTURE (RNAV)



## DEPARTURE ROUTE DESCRIPTION

TAKEOFF RUNWAY 13: Climb on heading 134° to 1001, then on heading 292° or as assigned by ATC, for vectors to cross DEMIL at or above 5000, thence. . .

TAKEOFF RUNWAY 31: Climb on heading 314° to 1800, then on heading 291° or as assigned by ATC, for vectors to cross DEMIL at or above 5000, thence. . .

. . . on track 270° to cross BOTCH at or below 13000, then on (transition). Maintain ATC assigned altitude, expect filed altitude 10 minutes after departure.

ALIAN TRANSITION (BOTCH1.ALIAN)

BRHMA TRANSITION (BOTCH1.BRHMA)

CIKAN TRANSITION (BOTCH1.CIKAN)

DOSXX TRANSITION (BOTCH1.DOSXX)

HUDAD TRANSITION (BOTCH1.HUDAD)

HULZE TRANSITION (BOTCH1.HULZE)

WSTEX TRANSITION (BOTCH1.WSTEX)

SC-2, 19 MAR 2026 to 16 APR 2026

SC-2, 19 MAR 2026 to 16 APR 2026