

KINGDOM FIVE DEPARTURE  
(KING5.TTT) 17AR25

RADAR and DME required.

**TOP ALTITUDE:  
ASSIGNED BY ATC**

LONE STAR DEP CON  
125.2 343.65  
CTAF  
122.7

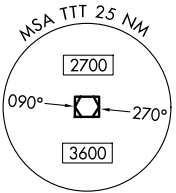
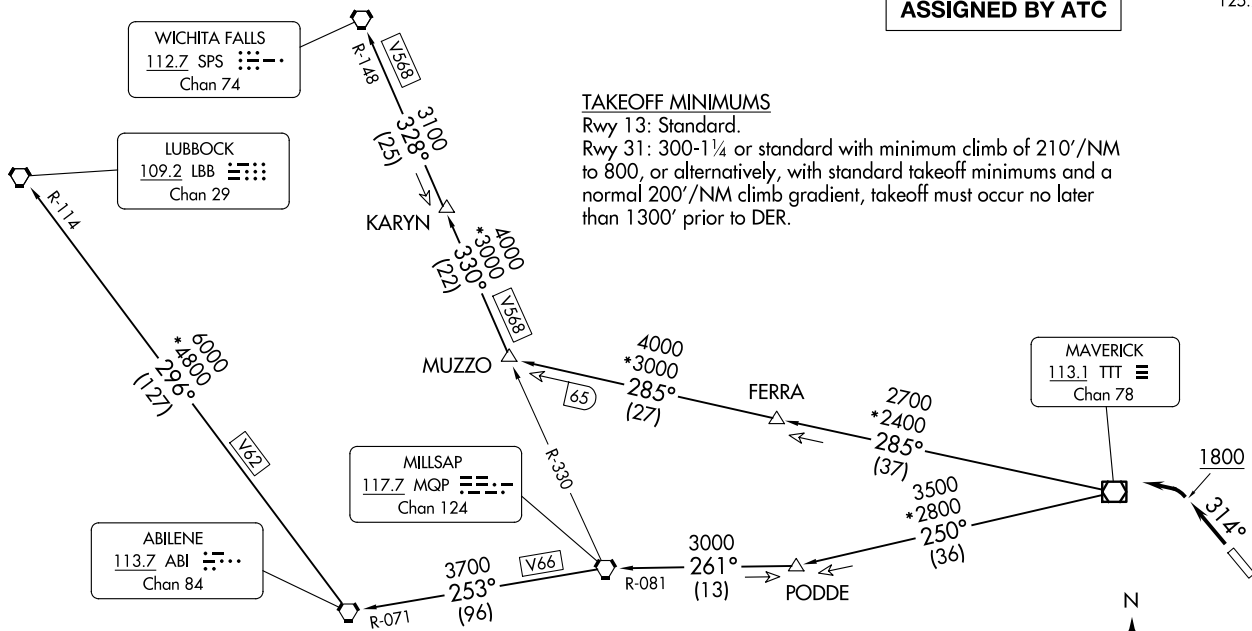
(KING5.TTT) 25107  
KINGDOM FIVE DEPARTURE

AL-5936 (FAA)

LANCASTER RGNL (L'NC)  
LANCASTER, TEXAS

TAKEOFF MINIMUMS

Rwy 13: Standard.  
Rwy 31: 300-1/4 or standard with minimum climb of 210'/NM to 800, or alternatively, with standard takeoff minimums and a normal 200'/NM climb gradient, takeoff must occur no later than 1300' prior to DER.



- NOTE: LUBBOCK Transition: For all aircraft overflying the MQP VORTAC westbound or direct.
- NOTE: MILLSAP Transition: For all aircraft overflying the MQP VORTAC westbound or direct.
- NOTE: PODDE Transition: ATC assigned.
- NOTE: WICHITA FALLS Transition: For all aircraft landing within the Wichita Falls terminal area or overflying the SPS VORTAC.
- NOTE: For all aircraft requesting 17000 and below.

NOTE: Chart not to scale.

(CONTINUED ON FOLLOWING PAGE)

LANCASTER, TEXAS  
LANCASTER RGNL (L'NC)

# KINGDOM FIVE DEPARTURE



## DEPARTURE ROUTE DESCRIPTION

TAKEOFF RUNWAY 31: Climb on heading 314° to 1800 before turning left.

When entering controlled airspace, fly assigned heading for RADAR vectors to appropriate route. Maintain ATC assigned altitude.

LUBBOCK TRANSITION (KING5.LBB): From over TTT VOR/DME on TTT R-250 to PODDE, then on MQP R-081 to MQP VORTAC, then on MQP R-253 and ABI R-071 to ABI VORTAC, then on ABI R-296 and LBB R-114 to LBB VORTAC.

MILLSAP TRANSITION (KING5.MQP): From over TTT VOR/DME on TTT R-250 to PODDE, then on MQP R-081 to MQP VORTAC.

PODDE TRANSITION (KING5.PODDE): From over TTT VOR/DME on TTT R-250 to PODDE.

WICHITA FALLS TRANSITION (KING5.SPS): From over TTT VOR/DME on TTT R-285 to MUZZO, then on MQP R-330 and SPS R-148 to KARYN, then on SPS R-148 to SPS VORTAC.

SC-2, 19 MAR 2026 to 16 APR 2026

SC-2, 19 MAR 2026 to 16 APR 2026