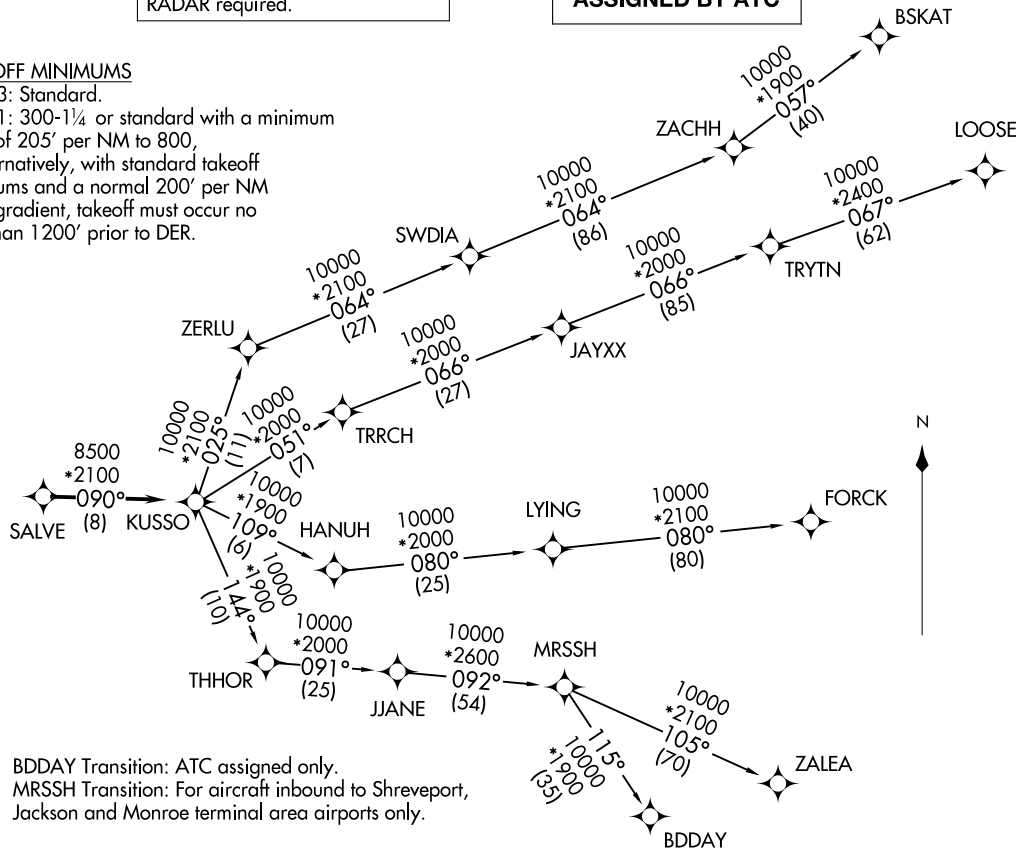


RNAV 1 - DME/DME/IRU or GPS.  
RADAR required.

**TOP ALTITUDE:  
ASSIGNED BY ATC**

**TAKEOFF MINIMUMS**  
Rwy 13: Standard.  
Rwy 31: 300-1¼ or standard with a minimum climb of 205' per NM to 800, or alternatively, with standard takeoff minimums and a normal 200' per NM climb gradient, takeoff must occur no later than 1200' prior to DER.

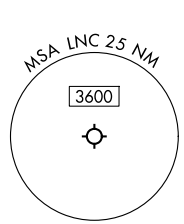
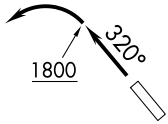


NOTE: BDDAY Transition: ATC assigned only.  
NOTE: MRSSH Transition: For aircraft inbound to Shreveport, Jackson and Monroe terminal area airports only.

(CONTINUED ON FOLLOWING PAGE)

NOTE: Chart not to scale.

LONE STAR DEP CON  
125.2 343.65  
CTAF  
122.7



KUSSO TWO DEPARTURE (RNAV)  
(KUSSO2.KUSSO) 22JAN26

LANCASTER, TEXAS  
LANCASTER RGNL (LNC)

(KUSSO2.KUSSO) 26022  
KUSSO TWO DEPARTURE (RNAV)

LANCASTER, TEXAS  
LANCASTER RGNL (LNC)

AL-5936 (FAA)

# KUSSO TWO DEPARTURE (RNAV)



## DEPARTURE ROUTE DESCRIPTION

TAKEOFF RUNWAY 31: Climb on heading 320° to 1800 before turning left.

When entering controlled airspace, fly heading assigned by ATC, expect vector to SALVE, then on track 090° to KUSSO, then on assigned transition. Maintain ATC assigned altitude, expect filed altitude 10 minutes after departure.

- BDDAY TRANSITION (KUSSO2.BDDAY)
- BSKAT TRANSITION (KUSSO2.BSKAT)
- FORCK TRANSITION (KUSSO2.FORCK)
- LOOSE TRANSITION (KUSSO2.LOOSE)
- MRSSH TRANSITION (KUSSO2.MRSSH)
- ZALEA TRANSITION (KUSSO2.ZALEA)

SC-2, 19 MAR 2026 to 16 APR 2026

SC-2, 19 MAR 2026 to 16 APR 2026