

WAAS CH <b>82723</b> <b>W18A</b>	APP CRS <b>183°</b>	Rwy Idg <b>5008</b> TDZE <b>930</b> Apt Elev <b>930</b>
--	------------------------	---

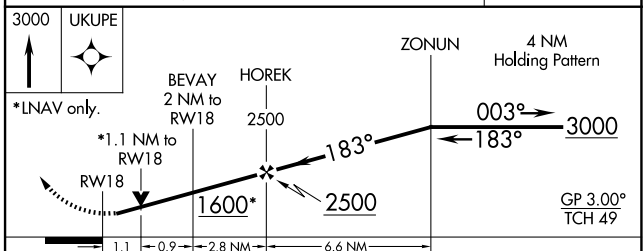
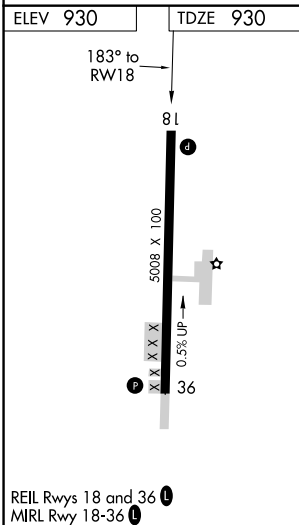
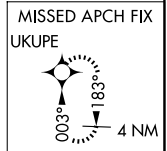
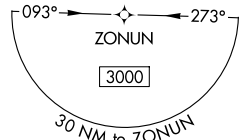
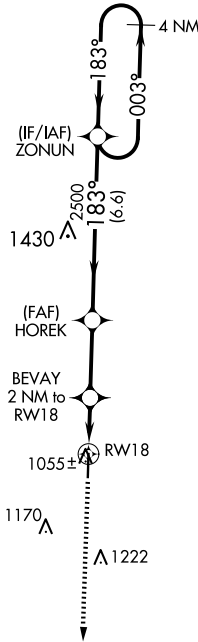
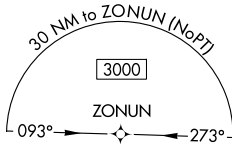
# RNAV (GPS) RWY 18

POSEY FLD (1M4)

**⚠** Circling Rwy 36 NA at night. Rwy 18 helicopter visibility reduction below  $\frac{3}{4}$  SM NA. When local altimeter setting not received, use Muscle Shoals altimeter setting; Increase LPV DA to 1298 feet, and LNAV/VNAV DA to 1354 feet and LNAV/VNAV visibility  $\frac{1}{4}$  SM; increase all MDAs 120 feet and visibility LNAV Cats C and D  $\frac{1}{4}$  SM; increase Circling Cat C visibility  $\frac{1}{2}$  SM and Cat D  $\frac{1}{4}$  SM. Baro-VNAV NA when using Muscle Shoals altimeter setting. For uncompensated Baro-VNAV systems, LNAV/VNAV NA below -16°C (4°F) or above 54°C (130°F). DME/DME RNP-0.3 NA. VDP NA with Muscle Shoals altimeter setting.

**MISSED APPROACH:**  
Climb to 3000 direct UKUPE and hold.

AWOS-3PT <b>119.525</b>	MEMPHIS CENTER <b>120.8 307.0</b>	UNICOM <b>122.8 (CTAF) 0</b>
----------------------------	--------------------------------------	---------------------------------



CATEGORY	A	B	C	D
LPV DA		1180-1	250 (300-1)	
LNAV/ VNAV DA		1236-1	306 (400-1)	
LNAV MDA	1320-1	390 (400-1)	1320-1½	390 (400-1½)
CIRCLING	1380-1 450 (500-1)	1400-1 470 (500-1)	1520-1½ 590 (600-1½)	1540-2 610 (700-2)

SE-4, 19 MAR 2026 to 16 APR 2026

SE-4, 19 MAR 2026 to 16 APR 2026