

RNAV 1-DME/DME/IRU or GPS.
RADAR required.

**TOP ALTITUDE:
ASSIGNED BY ATC**

ATIS 120.55
GND CON 121.9
POMPANO BEACH TOWER ★ 125.4
MIAMI DEP CON 126.05 251.1

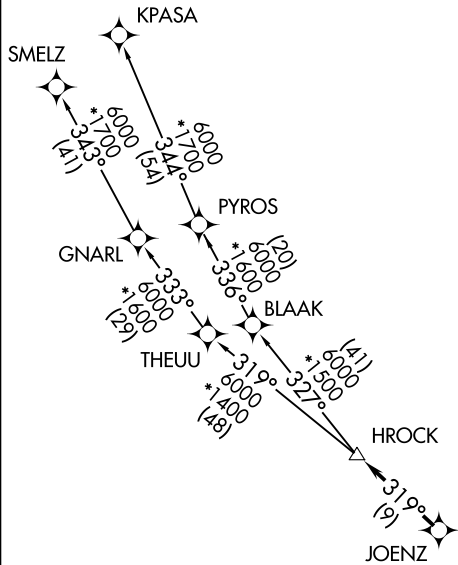
(HROCK2, HROCK) 23110
HROCK TWO DEPARTURE (RNAV)

AL-5972 (FAA)

POMPANO BEACH AIRPARK (PMBP)
POMPANO BEACH, FLORIDA

HROCK TWO DEPARTURE (RNAV)
(HROCK2, HROCK) 20APR23

POMPANO BEACH, FLORIDA
POMPANO BEACH AIRPARK (PMBP)



TAKEOFF MINIMUMS

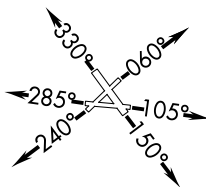
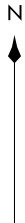
Rwys 6, 24, 28, 33: Standard.

Rwy 10: 300-1¼ or standard with minimum climb of 265' per NM to 300.

Rwy 15: 300-2 or standard with minimum climb of 425' per NM to 500.

NOTE: Jet aircraft only.

NOTE: Accelerate to 250K, if unable, advise ATC.



(NARRATIVE ON FOLLOWING PAGE)

NOTE: Chart not to scale.

HROCK TWO DEPARTURE (RNAV)



DEPARTURE ROUTE DESCRIPTION

TAKEOFF RUNWAY 6: Climb on heading 060° or as assigned for RADAR vectors to cross JOENZ, thence. . . .

TAKEOFF RUNWAY 10: Climb on heading 105° or as assigned for RADAR vectors to cross JOENZ, thence. . . .

TAKEOFF RUNWAY 15: Climb on heading 150° or as assigned for RADAR vectors to cross JOENZ, thence. . . .

TAKEOFF RUNWAY 24: Climb on heading 240° or as assigned for RADAR vectors to cross JOENZ, thence. . . .

TAKEOFF RUNWAY 28: Climb on heading 285° or as assigned for RADAR vectors to cross JOENZ, thence. . . .

TAKEOFF RUNWAY 33: Climb on heading 330° or as assigned for RADAR vectors to cross JOENZ, thence. . . .

. . . .on track 319° to HROCK, then on assigned transition. Maintain ATC assigned altitude, expect filed altitude within 10 minutes after departure.

KPASA TRANSITION (HROCK2.KPASA)

SMELZ TRANSITION (HROCK2.SMELZ)

SE-3, 19 MAR 2026 to 16 APR 2026

SE-3, 19 MAR 2026 to 16 APR 2026