

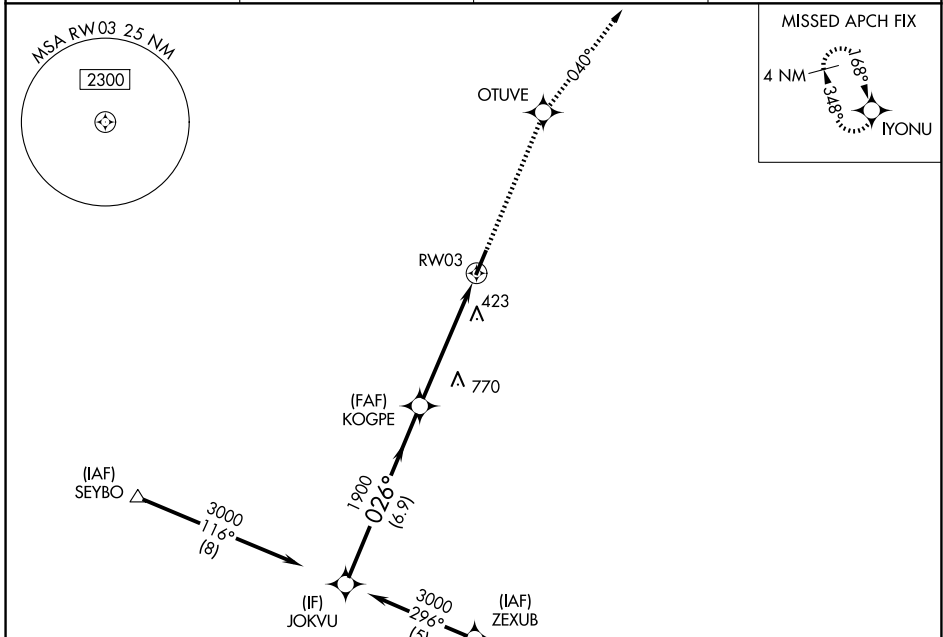
WAAS CH <b>70508</b> <b>W03A</b>	APP CRS <b>026°</b>	Rwy Ldg TDZE Apt Elev	<b>5001</b> <b>202</b> <b>202</b>
--	------------------------	-----------------------------	---

# RNAV (GPS) RWY 3

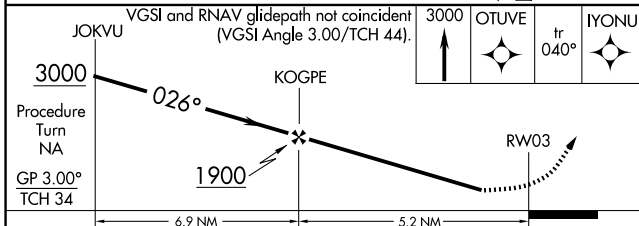
TELFAIR-WHEELER (MQW)

RNP APCH-GPS.		MISSED APPROACH: Climb to 3000 direct OTUVE and via 040° track to IYONU and hold.
	Rwy 3 helicopter visibility reduction below 1 SM NA. For uncompensated Baro-VNAV systems, LNAV/VNAV NA below -15°C or above 54°C. Procedure NA at night.	

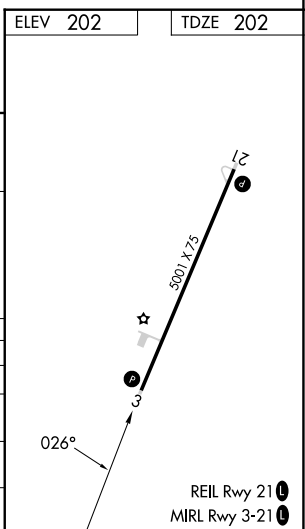
AWOS-3PT <b>120.0</b>	VDI AWOS-3 <b>119.925</b>	JACKSONVILLE CENTER <b>127.575 269.025</b>	CTAF <b>122.90</b>
--------------------------	------------------------------	---	-----------------------



ELEV 202	TDZE 202
----------	----------



CATEGORY	A	B	C	D
LPV DA	593-1½ 391 (400-1½)			
LNAV/VNAV DA	903-2 701 (800-2)		903-2¼ 701 (800-2¼)	
LNAV MDA	1160-1¼ 958 (1000-1¼)	1160-1½ 958 (1000-1½)	1160-3 958 (1000-3)	
CIRCLING	1160-1¼ 958 (1000-1¼)	1160-1½ 958 (1000-1½)	1160-3 958 (1000-3)	



SE-4, 19 MAR 2026 to 16 APR 2026

SE-4, 19 MAR 2026 to 16 APR 2026