

VOR/DME HUT 116.8 Chan 115	APP CRS 322°	Rwy Idg TDZE Apt Elev	N/A N/A 1692
--	------------------------	-----------------------------	---

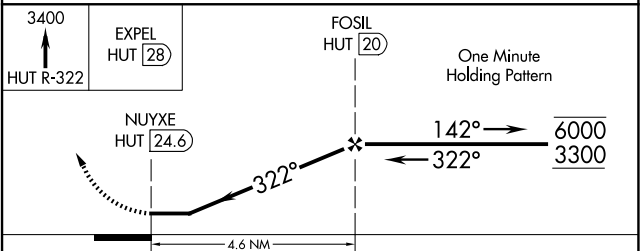
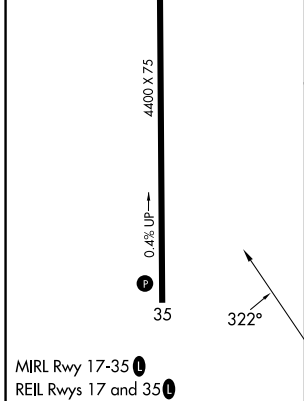
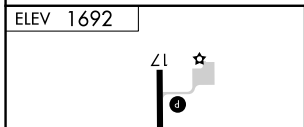
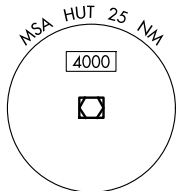
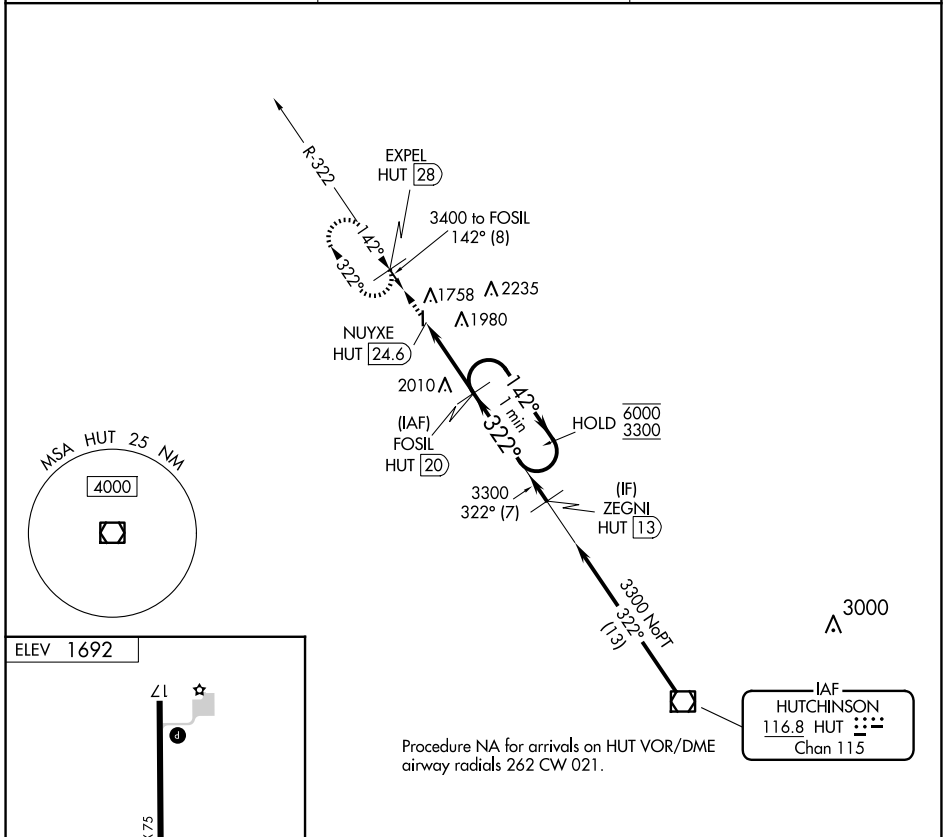
VOR-A
LYONS-RICE COUNTY MUNI (LYO)

DME required.

⚠ Circling to Rwy 17 NA at night. When local altimeter setting not received, use Hutchinson altimeter setting.

MISSED APPROACH: Climb to 3400 on HUT VOR/DME R-322 to EXPEL/HUT 28 DME and hold.

AWOS-3P 119.925	KANSAS CITY CENTER 118.8 322.425	UNICOM 122.8 (CTAF) 0
---------------------------	--	---------------------------------



CATEGORY	A	B	C	D
C CIRCLING	2400-1	708 (800-1)	NA	

NC-2, 19 MAR 2026 to 16 APR 2026

NC-2, 19 MAR 2026 to 16 APR 2026