

OCEANSIDE, CALIFORNIA

COPTER TACAN RWY 21

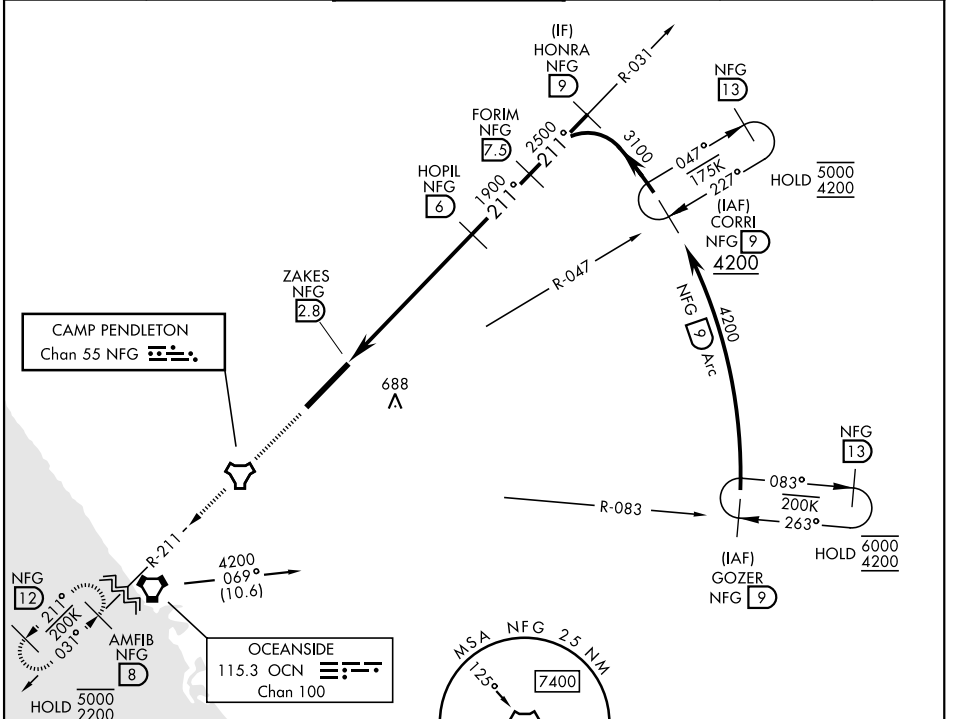
TACAN NFG Chan 55	APCH CRS 211°	Rwy ldg TDZE Arpt Elev 6005 78 78	[USN]	CAMP PENDLETON MCAS (MUNN FLD) (KNFG)
----------------------	------------------	--	-------	---------------------------------------

▼ *When ALS inop, increase vis to 1 mile. Helicopter visibility reduction below 3/4 mile not authorized.

SALSF 

MISSED APPROACH: Climb to 2200 direct NFG TACAN then direct AMFIB and hold.

ATIS ★ 285.45	SOCAL APP CON 127.3 323.0	TOWER ★ 128.775 340.2	GND CON 134.675 360.2	CLNC DEL 134.675 271.6	ASR/ PAR
------------------	------------------------------	--------------------------	--------------------------	---------------------------	-------------



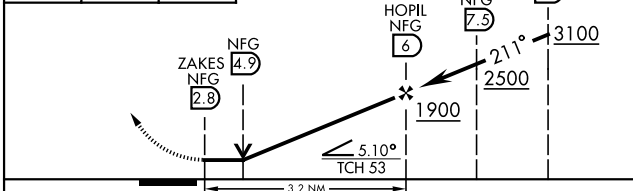
SW-3, 19 MAR 2026 to 16 APR 2026

SW-3, 19 MAR 2026 to 16 APR 2026

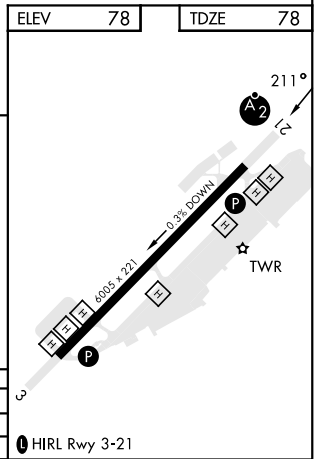
ELEV 78	TDZE 78
---------	---------

EMERG SAFE ALT 100 NM 13,700

2200	NFG	AMFIB NFG	VDA and VGSI not coincident. (VGSI Angle 3.50/TCH 53)
------	-----	-----------	---



CATEGORY	COPTER
H-21*	940-3/4 862 (900-3/4)
CIRCLING	NOT AUTHORIZED



OCEANSIDE, CALIFORNIA 33°18'N-117°21'W CAMP PENDLETON MCAS (MUNN FLD) (KNFG)

Amtd 6 12JUN25

COPTER TACAN RWY 21