

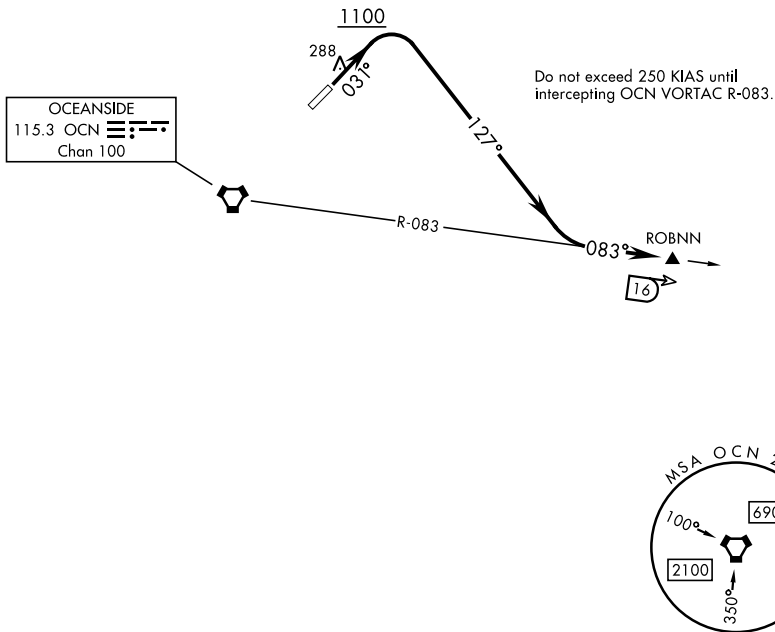
MUNN FOUR DEPARTURE (OBSTACLE) (MUNN 4.ROBNN)

ATIS ★ 285.45
 CLNC DEL
 134.675 271.6
 GND CON
 134.675 360.2
 TOWER ★
 128.775 340.2
 SOCAL DEP CON
 127.3 323.0

[USN]

Rwy	Knots	60	120	180	240	300	360
3	V/V(fpm)	378	756	1134	1512	1890	2268

Minimum Climb Rate to 1000



SW-3, 19 MAR 2026 to 16 APR 2026

SW-3, 19 MAR 2026 to 16 APR 2026

DEPARTURE ROUTE DESCRIPTION

TAKEOFF RWY 3: Climb on heading 031° to 1100 then climbing right turn heading 127° to intercept OCN VORTAC R-083 to ROBNN. Cross ROBNN at 5000 or as directed by ATC.