

OCEANSIDE, CALIFORNIA

RNAV (GPS) RWY 21

WAS CH 91083 W21A	APCH CRS 211°	Rwy ldg TDZE Arprt Elev 78	6005 78 78
------------------------------------	----------------------	--------------------------------------	---------------------------------------

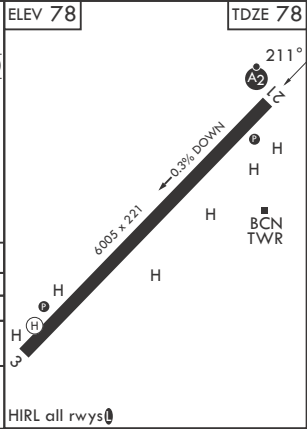
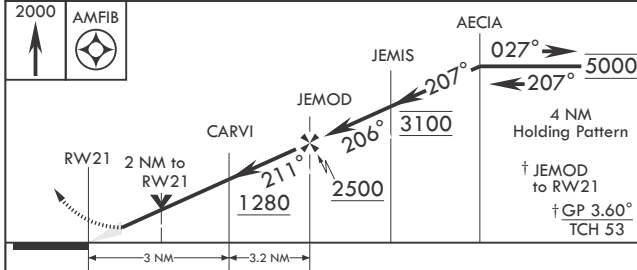
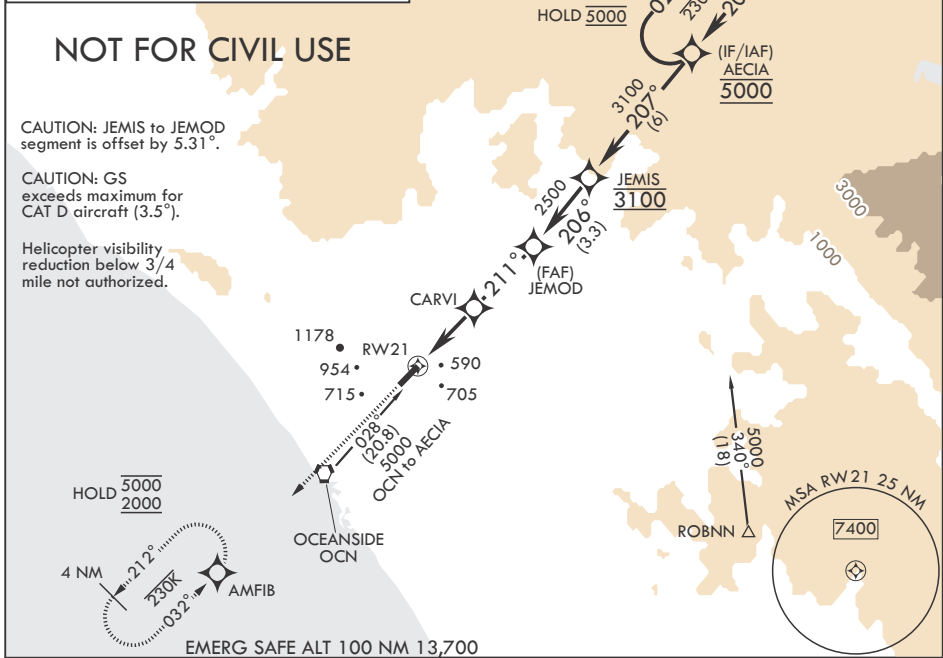
(USN) CAMP PENDLETON MCAS (MUNN FLD) (KNFG)

RNP APCH-GPS
 * When ALS inop, increase CAT A vis to 1 mile, CAT B vis to 1 1/4 miles, CAT CD vis to 2 1/2 miles.
 ** Circling Rwy 3 not authorized at night.

SALSF MISSED APPROACH: Climb to 2000 direct AMFIB and hold.

ATIS* 285.45	SOCAL APP CON/DEP CON 127.3 323.0	TOWER* 128.775 0 340.2	GND CON 134.675 360.2	ASR/PAR
---------------------	--	-------------------------------	------------------------------	---------

Knots	60	120	180	240	300	360
V/V(fpm)	502	1004	1506	2008	2510	3012
Min climb of 502 ft/NM to 740-Controlling obstacle 715						



CATEGORY	A	B	C	D
LPV DA	329-3/4	251 (300-3/4)	378-3/4	300 (300-3/4)
LNAV MDA*	860-3/4 782 (800-3/4)	860-1 782 (800-1)	860-2	782 (800-2)
CIRCLING**	1020-1 1/4 942 (1000-1 1/4)	1260-1 1/2 1182 (1200-1 1/2)	1480-3	1402 (1500-3)

OCEANSIDE, CALIFORNIA 33°18'N - 117°21'W CAMP PENDLETON MCAS (MUNN FLD) (KNFG)

Amdt 7 25DEC25

RNAV (GPS) RWY 21

SW-3, 19 MAR 2026 to 16 APR 2026

SW-3, 19 MAR 2026 to 16 APR 2026