

# TACAN Z RWY 21

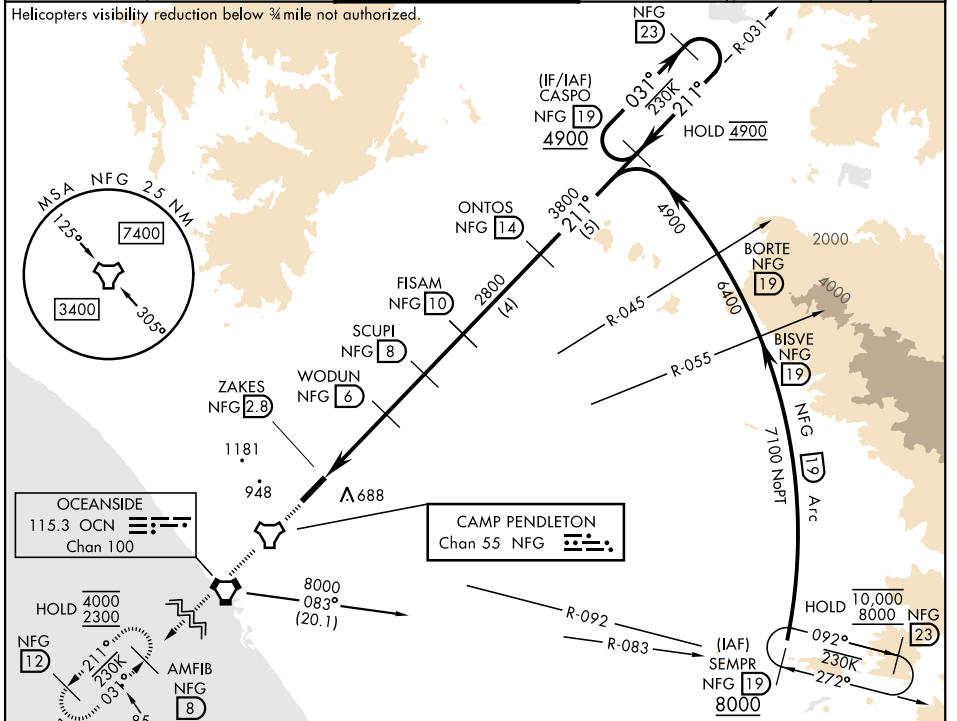
TACAN NFG Chan <b>55</b>	APCH CRS <b>211°</b>	Rwy Idg TDZE Arpt Elev <b>6005</b> <b>78</b> <b>78</b>	[USN]	CAMP PENDLETON MCAS (MUNN FLD) (KNFG)
-----------------------------	-------------------------	-----------------------------------------------------------------------	-------	---------------------------------------

▼ \* When ALS inop, increase CAT A vis to 1½ mile, CAT B vis to 1½ miles, CAT CD vis to 3 miles.  
 \*\* Circling Rwy 3 not authorized at night when VGSI inop.

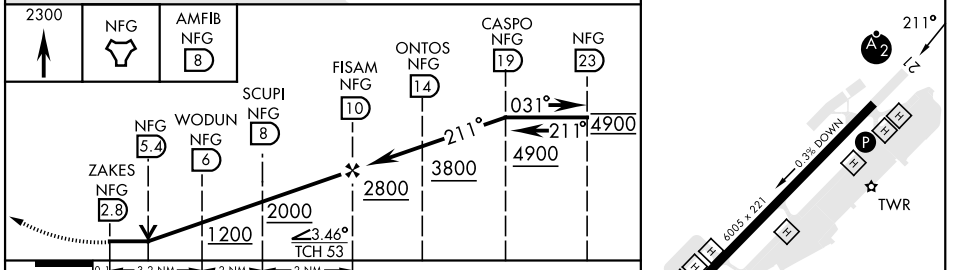


MISSED APPROACH: Climb to 2300 direct NFG TACAN then direct AMFIB and hold.

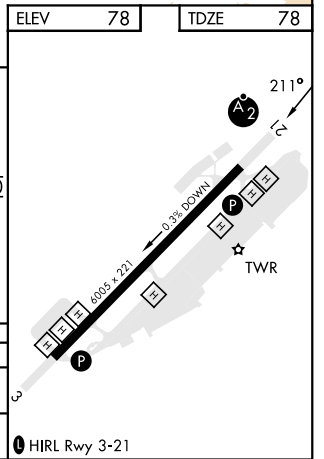
ATIS ★ <b>285.45</b>	SOCAL APP CON <b>127.3 323.0</b>	TOWER ★ <b>128.775 340.2</b>	GND CON <b>134.675 360.2</b>	CLNC DEL <b>134.675 271.6</b>	ASR/PAR
-------------------------	-------------------------------------	---------------------------------	---------------------------------	----------------------------------	---------



ELEV	78	TDZE	78
------	----	------	----



CATEGORY	A	B	C	D
S-21*	1120-1 1042 (1100-1)	1120-1½ 1042 (1100-1½)	1120-2½ 1042 (1100-2½)	
CIRCLING**	1120-1½ 1042 (1100-1½)	1260-1½ 1182 (1200-1½)	1500-3 1422 (1500-3)	



OCEANSIDE, CALIFORNIA 33° 18'N-117° 21'W CAMP PENDLETON MCAS (MUNN FLD) (KNFG)

Amtd 7 12JUN25

# TACAN Z RWY 21

SW-3, 19 MAR 2026 to 16 APR 2026

SW-3, 19 MAR 2026 to 16 APR 2026