

OCEANSIDE, CALIFORNIA

# VOR/DME or TACAN Y RWY 21

VORTAC OCN <b>115.3</b> Chan <b>100</b>	APCH CRS <b>206°</b>	Rwy Idg TDZE Arprt Elev <b>6005</b> <b>78</b> <b>78</b>
---	-------------------------	--

[USN]

CAMP PENDLETON MCAS (MUNN FLD) (KNFG)

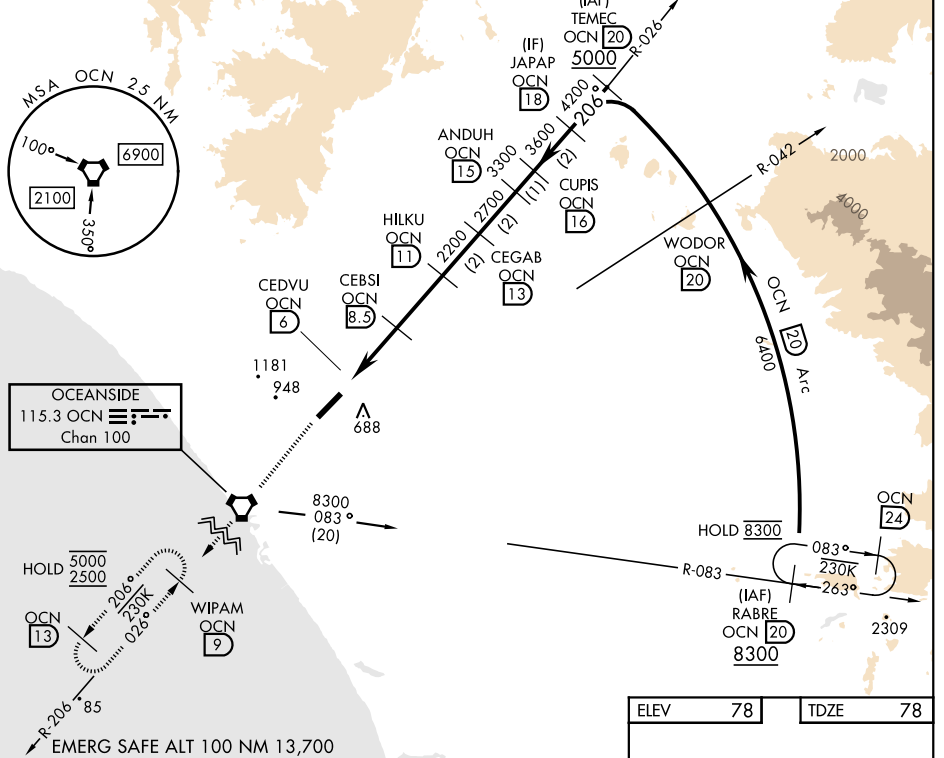
\* When ALS inop, increase CAT A vis to 1½ miles,  
 CAT B vis to 1½ miles, CAT CD vis to 3 miles.  
 \*\* Circling Rwy 3 not authorized at night when VGSI inop.

SALSF  
A2

MISSED APPROACH: Climb to 2500 direct OCN  
VORTAC then direct WIPAM and hold.

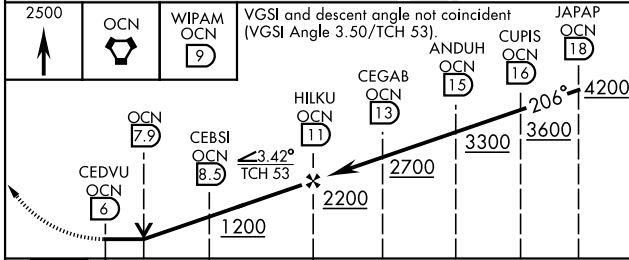
ATIS ★ <b>285.45</b>	APP CON <b>127.3 323.0</b>	TOWER ★ <b>128.775 340.2</b>	GND CON <b>134.675 360.2</b>	CLNC DEL <b>134.675 271.6</b>	ASR \ PAR
-------------------------	-------------------------------	---------------------------------	---------------------------------	----------------------------------	-----------

Visibility reduction by helicopters not authorized.



SW-3, 19 MAR 2026 to 16 APR 2026

SW-3, 19 MAR 2026 to 16 APR 2026



ELEV	78	TDZE	78
------	----	------	----

CATEGORY	A	B	C	D
S-21 *	1120-1 1042 (1100-1)	1120-1½ 1042 (1100-1½)	1120-2½	1042 (1100-2½)
CIRCLING **	1120-1½ 1042 (1100-1½)	1260-1½ 1182 (1200-1½)	1500-3	1422 (1500-3)

OCEANSIDE, CALIFORNIA

33° 18' N-117° 21' W

CAMP PENDLETON MCAS (MUNN FLD) (KNFG)

Amtd 6 12JUN25

# VOR/DME or TACAN Y RWY 21