

WAAS CH <b>69301</b> <b>W36A</b>	APP CRS <b>003°</b>	Rwy Ldg <b>4701</b> TDZE <b>2310</b> Apt Elev <b>2314</b>
--	------------------------	---

# RNAV (GPS) RWY 36

BREWSTER FLD (HDE)

RNP APCH - GPS.

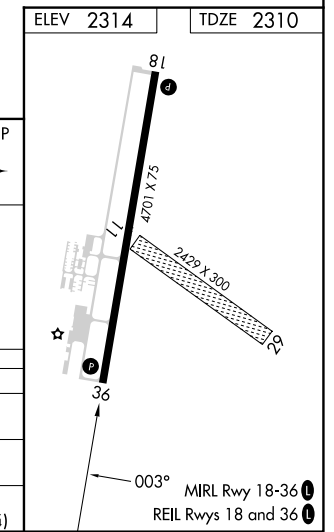
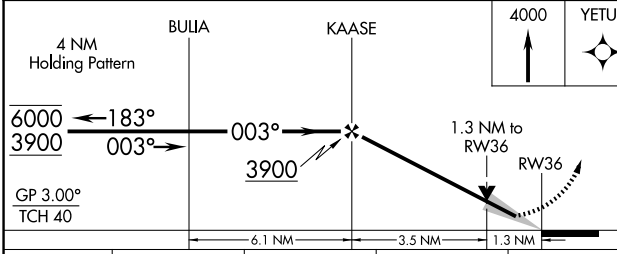
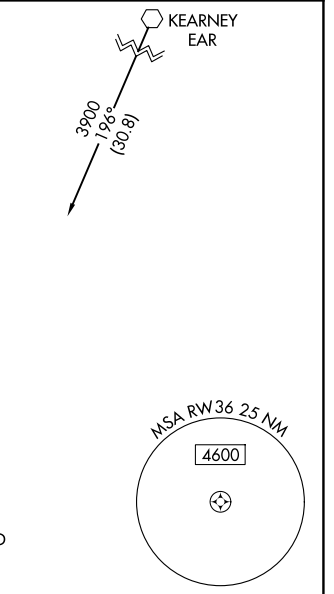
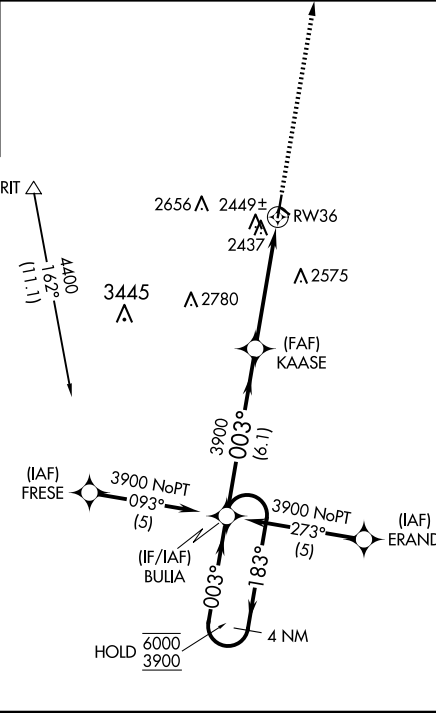
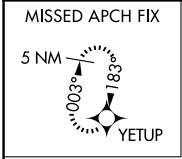
**⚠** Circling NA to Rwys 11 and 29. When local altimeter setting not received, use EAR altimeter setting and increase LPV DA to 2637 feet and all visibilities ¼ SM. Increase all MDAs 80 feet and LNAV visibility Cat C/D ½ SM, and Circling visibility Cat C/D ¼ SM. VDP NA when using EAR altimeter setting.

MISSED APPROACH: Climb to 4000 direct YETUP and hold.

AWOS-3  
**121.325**

DENVER CENTER  
**132.7 226.675**

UNICOM  
**122.8 (CTAF) 0**



CATEGORY	A	B	C	D
LPV DA	2560-1		250 (300-1)	
LNAV MDA	2760-1	450 (500-1)	2760-1⅜	450 (500-1⅜)
CIRCLING	2840-1 526 (600-1)	2880-1 566 (600-1)	3020-2 706 (800-2)	3020-2¼ 706 (800-2¼)

NC-2, 19 MAR 2026 to 16 APR 2026

NC-2, 19 MAR 2026 to 16 APR 2026