

VOR EAR <b>111.2</b>	APP CRS <b>217°</b>	Rwy Ldg TDZE Apt Elev	<b>N/A</b> <b>N/A</b> <b>2314</b>
-------------------------	------------------------	-----------------------------	---

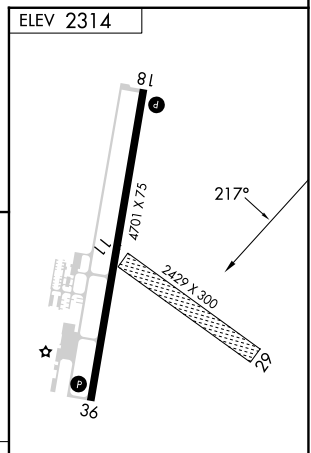
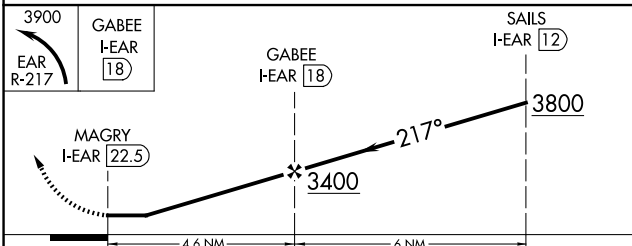
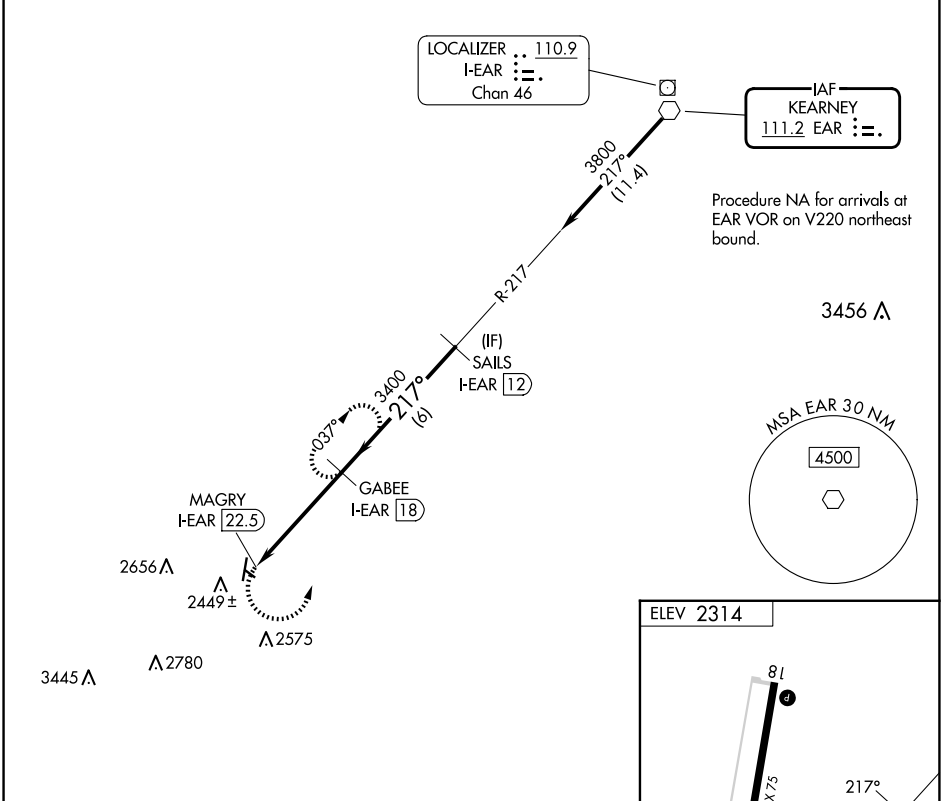
**VOR-A**  
BREWSTER FLD (HDE)

DME required.

**▽** Circling NA to Rwys 11 and 29. When local altimeter setting not received, use EAR altimeter setting and increase all MDAs 80 feet, and all visibilities ¼ SM. DME from I-EAR localizer. Simultaneous reception of EAR VOR and I-EAR DME required.

**⚠** MISSED APPROACH: Climbing left turn to 3900 on EAR VOR R-217 to GABEE/I-EAR 18 DME and hold, continue climb-in-hold to 3900.

AWOS-3 <b>121.325</b>	DENVER CENTER <b>132.7 226.675</b>	UNICOM <b>122.8 (CTAF) 0</b>
--------------------------	---------------------------------------	---------------------------------



CATEGORY	A	B	C	D
<b>C</b> CIRCLING	3100-1	786 (800-1)	3100-2¼ 786 (800-2¼)	3100-2½ 786 (800-2½)

MIRL Rwy 18-36  
REIL Rwys 18 and 36

NC-2, 19 MAR 2026 to 16 APR 2026

NC-2, 19 MAR 2026 to 16 APR 2026