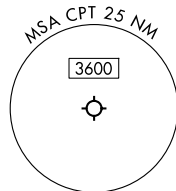


RNAV 1 - DME/DME/IRU or GPS required.
RADAR required for non-GPS equipped aircraft.

LONE STAR DEP CON
135.975 379.9
CTAF
122.8

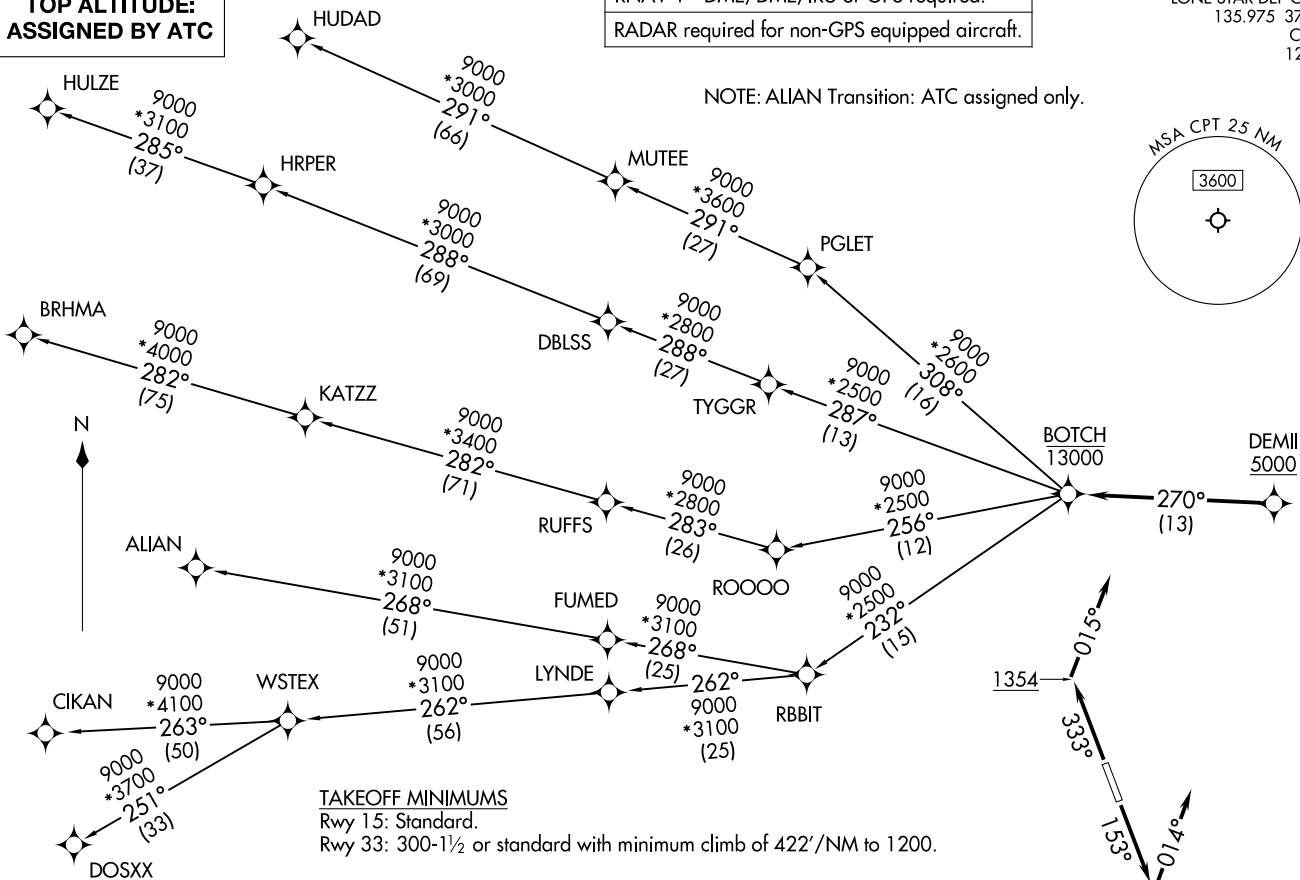
**TOP ALTITUDE:
ASSIGNED BY ATC**

NOTE: ALIAN Transition: ATC assigned only.



BOTCH ONE DEPARTURE (RNAV)
(BOTCH1 .BOTCH) 17 APR 25

(BOTCH1 .BOTCH) 25107
AL-6000 (FAA)



TAKEOFF MINIMUMS
Rwy 15: Standard.
Rwy 33: 300-1½ or standard with minimum climb of 422'/NM to 1200.

NOTE: Chart not to scale.

(CONTINUED ON FOLLOWING PAGE)

CLEBURNE, TEXAS
CLEBURNE RGNL (CPT)
(BOTCH1 .BOTCH) 17 APR 25

CLEBURNE, TEXAS
CLEBURNE RGNL (CPT)
(BOTCH1 .BOTCH) 25107

BOTCH ONE DEPARTURE (RNAV)



DEPARTURE ROUTE DESCRIPTION

TAKEOFF RUNWAY 15: Climb on heading 153° to 1354, then on heading 014° or as assigned by ATC, for vectors to cross DEMIL at or above 5000, thence. . .

TAKEOFF RUNWAY 33: Climb on heading 333° to 1354, then on heading 015° or as assigned by ATC, for vectors to cross DEMIL at or above 5000, thence. . .

. . . on track 270° to cross BOTCH at or below 13000, then on (transition). Maintain ATC assigned altitude, expect filed altitude 10 minutes after departure.

ALIAN TRANSITION (BOTCH1.ALIAN)

BRHMA TRANSITION (BOTCH1.BRHMA)

CIKAN TRANSITION (BOTCH1.CIKAN)

DOSXX TRANSITION (BOTCH1.DOSXX)

HUDAD TRANSITION (BOTCH1.HUDAD)

HULZE TRANSITION (BOTCH1.HULZE)

WSTEX TRANSITION (BOTCH1.WSTEX)

SC-2, 19 MAR 2026 to 16 APR 2026

SC-2, 19 MAR 2026 to 16 APR 2026