

GARLAND SIX DEPARTURE
 (GARL6.TT) 17APR25
 CLEBURNE, TEXAS
 CLEBURNE RGNL (CPT)

LONE STAR DEP CON
 135.975 379.9
 CTAF
 122.8

**TOP ALTITUDE:
 ASSIGNED BY ATC**

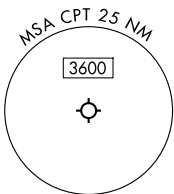
RADAR and DME required.

TAKEOFF MINIMUMS

Rwy 15: Standard.
 Rwy 33: 300-1½ or standard with minimum climb of 422'/NM to 1200.

NOTE: SOLDO Transition: ATC assigned.

MAVERICK
 113.1 TTT
 Chan 78

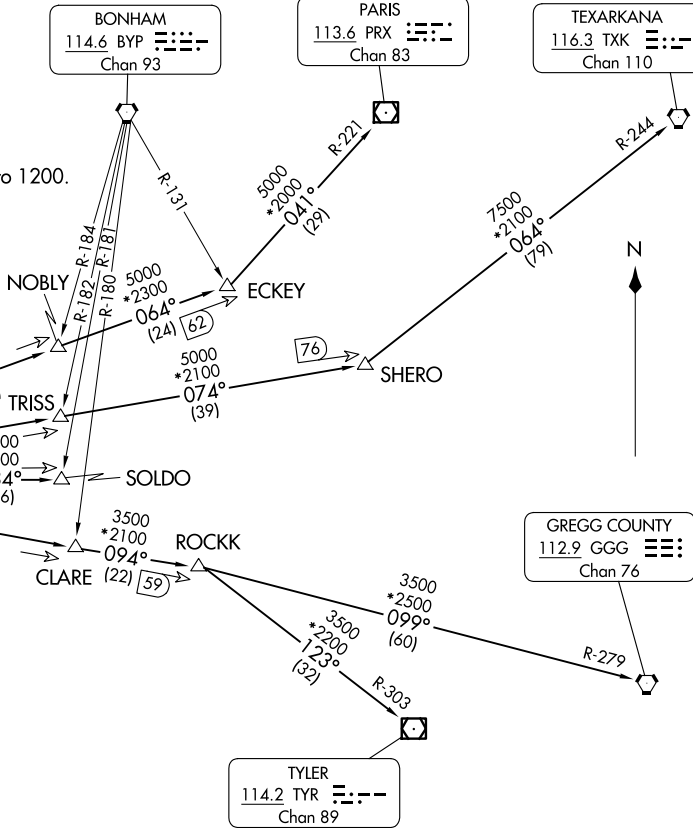


NOTE: Chart not to scale.

BONHAM
 114.6 BYP
 Chan 93

PARIS
 113.6 PRX
 Chan 83

TEXARKANA
 116.3 TXK
 Chan 110



(GARL6.TT) 25107
 GARLAND SIX DEPARTURE
 AL-6000 (FAA)
 CLEBURNE RGNL (CPT)
 CLEBURNE, TEXAS

(CONTINUED ON FOLLOWING PAGE)

GARLAND SIX DEPARTURE



DEPARTURE ROUTE DESCRIPTION

When entering controlled airspace, fly assigned heading for RADAR vectors to appropriate route. Maintain ATC assigned altitude.

GREGG COUNTY TRANSITION (GARL6.GGG): From over TTT VOR/DME on TTT R-094 to ROCKK, then on GGG R-279 to GGG VORTAC.

PARIS TRANSITION (GARL6.PRX): From over TTT VOR/DME on TTT R-064 to ECKEY, then on PRX R-221 to PRX VOR/DME.

SOLDO TRANSITION (GARL6.SOLDO): From over TTT VOR/DME on TTT R-084 to SOLDO.

TEXARKANA TRANSITION (GARL6.TXK): From over TTT VOR/DME on TTT R-074 to SHERO, then on TXK R-244 to TXK VORTAC.

TYLER TRANSITION (GARL6.TYR): From over TTT VOR/DME on TTT R-094 to ROCKK, then on TYR R-303 to TYR VOR/DME.

SC-2, 19 MAR 2026 to 16 APR 2026

SC-2, 19 MAR 2026 to 16 APR 2026