

# CSHEL EIGHT DEPARTURE (RNAV)

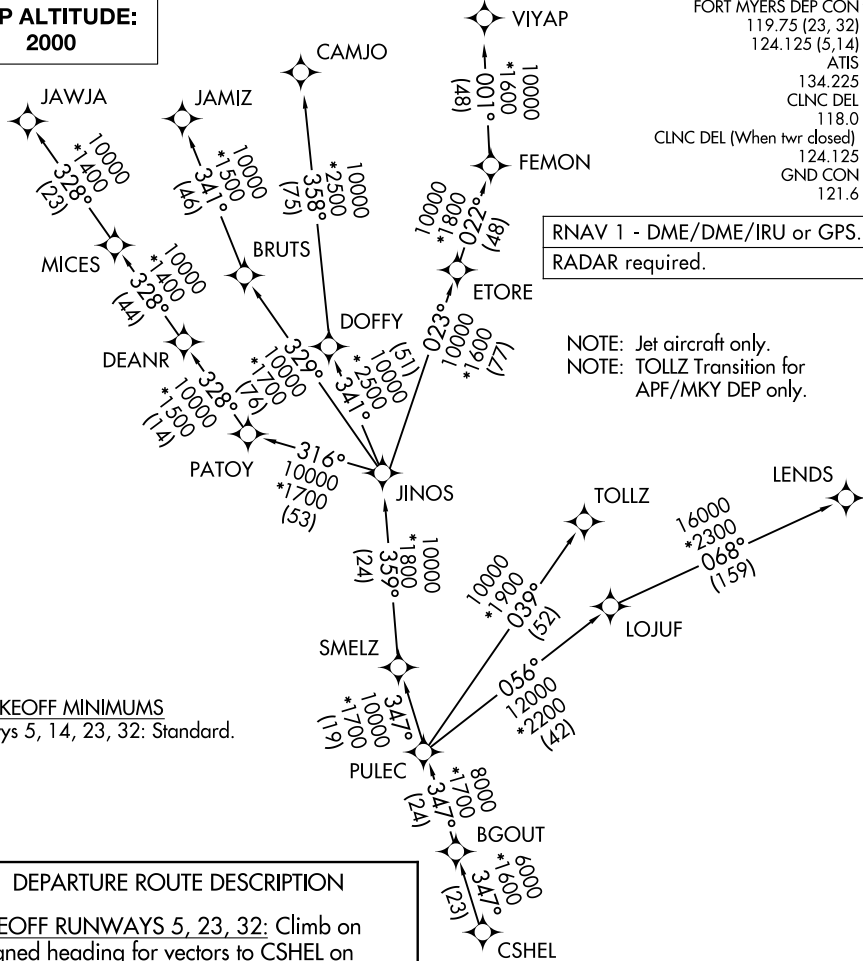
**TOP ALTITUDE:  
2000**

FORT MYERS DEP CON \*  
119.75 (23, 32)  
124.125 (5, 14)  
ATIS  
134.225  
CLNC DEL  
118.0  
CLNC DEL (When twr closed)  
124.125  
GND CON  
121.6

RNAV 1 - DME/DME/IRU or GPS.  
RADAR required.

NOTE: Jet aircraft only.  
NOTE: TOLLZ Transition for  
APF/MKY DEP only.

TAKEOFF MINIMUMS  
Rwys 5, 14, 23, 32: Standard.



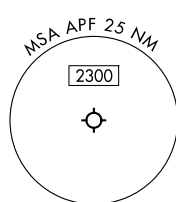
## DEPARTURE ROUTE DESCRIPTION

TAKEOFF RUNWAYS 5, 23, 32: Climb on assigned heading for vectors to CSHEL on assigned transition. Maintain 2000. Expect filed altitude 10 minutes after departure.

TAKEOFF RUNWAY 14: Climb on heading 137° to 600 for vectors to CSHEL, thence. . .

. . . on assigned transition. Maintain 2000. Expect filed altitude 10 minutes after departure.

- CAMJO TRANSITION (CSHEL8.CAMJO)
- JAMIZ TRANSITION (CSHEL8.JAMIZ)
- JAWJA TRANSITION (CSHEL8.JAWJA)
- LENDZ TRANSITION (CSHEL8.LENDZ)
- TOLLZ TRANSITION (CSHEL8.TOLLZ)
- VIYAP TRANSITION (CSHEL8.VIYAP)



NOTE: Chart not to scale.

# CSHEL EIGHT DEPARTURE (RNAV)