

WAAS CH 83489 W35A	APP CRS 351°	Rwy Ldg TDZE 1178 Apt Elev 1179
--	------------------------	---

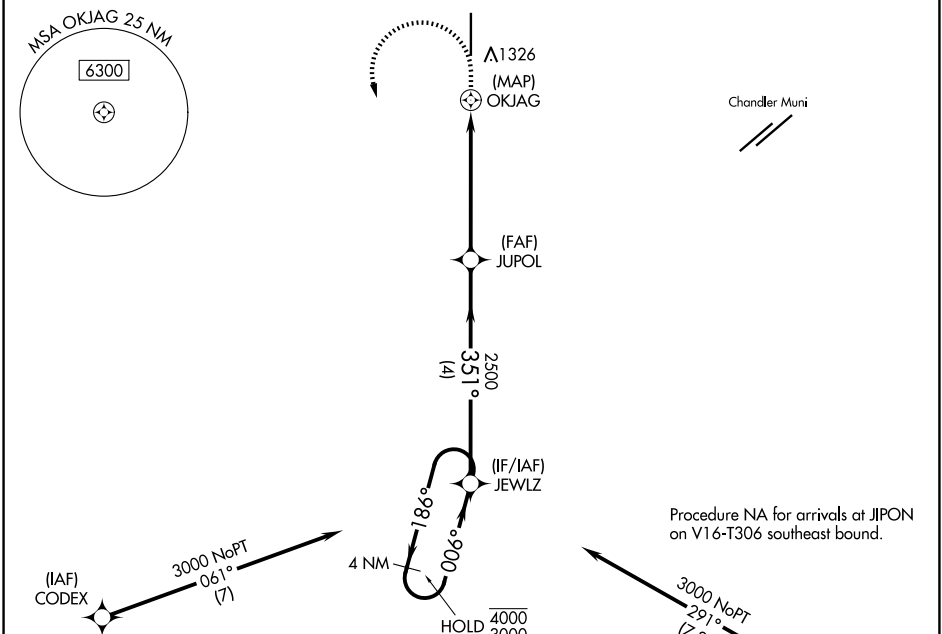
RNAV (GPS) RWY 35

STELLAR AIRPARK (P19)

RNP APCH - GPS.
RADAR required for procedure entry at CODEX.
Use CHD altimeter setting; when not received, use PHX altimeter setting. Rwy 35 helicopter visibility reduction below 1 SM NA. Activate MRL Rwy 17-35 and PAPI Rwy 17-35 - CTAf.

MISSED APPROACH: (Do not exceed 200K until JEWLZ)
Climb to 1700 then climbing left turn to 3000 direct JEWLZ and hold.

CHD ATIS 128,325	PHOENIX APP CON 123.7 363.0	UNICOM 122.975 (CTAF) 0
----------------------------	---------------------------------------	-----------------------------------



SW-4, 19 MAR 2026 to 16 APR 2026

SW-4, 19 MAR 2026 to 16 APR 2026

ELEV 1179	D	TDZE 1178
MRL Rwy 17-35		
REIL Rwy 17 and 35		

