

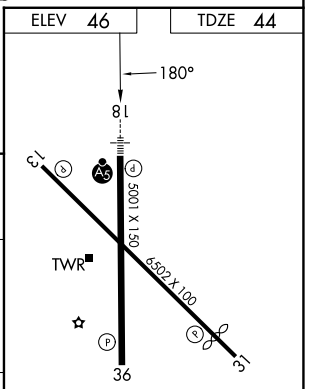
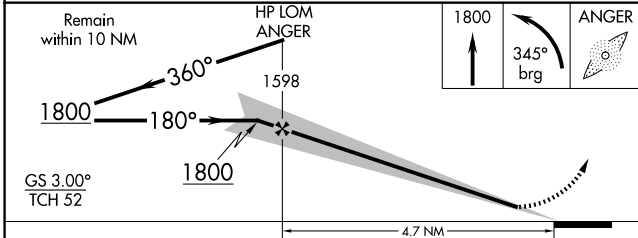
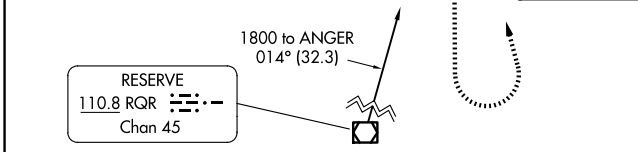
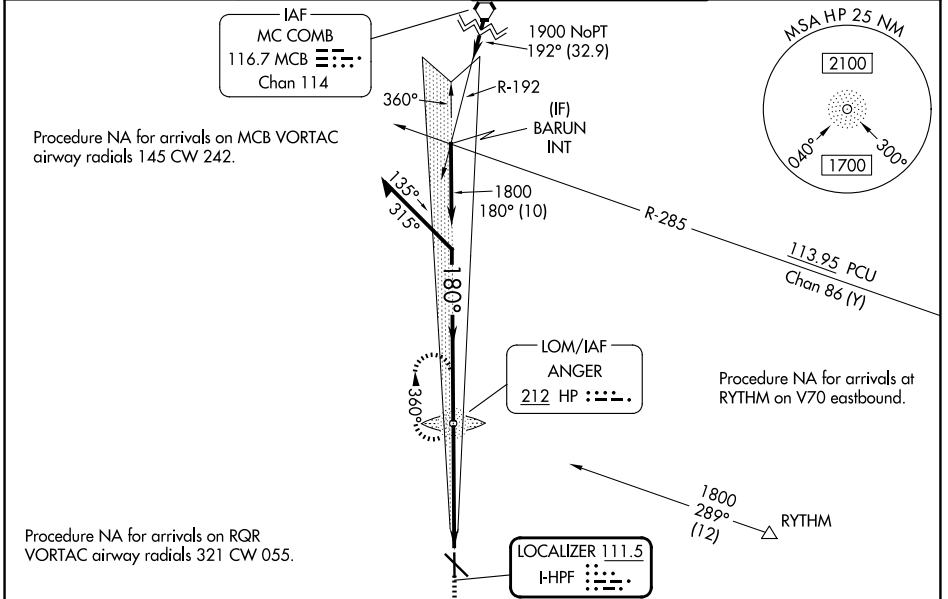
LOC I-HPF <b>111.5</b>	APP CRS <b>180°</b>	Rwy Ldg <b>5001</b>
		TDZE <b>44</b>
		Apt Elev <b>46</b>

# ILS or LOC RWY 18

HAMMOND NORTHSORE RGNL (HDC)

ADF required.	MALSR A5	MISSED APPROACH: Climb to 1800 then left turn on 345° bearing to ANGER LOM and hold.
For inop ALS, increase S-LOC 18 Cat C/D visibility to 1 3/8 SM. When local altimeter setting not received, use Louis Armstrong New Orleans Intl altimeter setting and increase S-ILS 18 DA to 339 feet; increase all MDAs 100 feet and S-LOC 18 visibility Cat C/D 1/4 SM, and Circling visibility Cat C/D 1/2 SM. For inop ALS when using Louis Armstrong New Orleans Intl altimeter setting, increase S-ILS all Cats visibility to 3/8 SM.		

ATIS <b>118.325</b>	NEW ORLEANS APP CON <b>119.3 350.35</b>	HAMMOND TOWER ★ <b>120.575 (CTAF) 0</b>	GND CON <b>119.85</b>
------------------------	--	--	--------------------------



CATEGORY	A	B	C	D
S-ILS 18	250-1/2 206 (300-1/2)			
S-LOC 18	540-1/2	496 (500-1/2)	540-1	496 (500-1)
CIRCLING	540-1	494 (500-1)	620-1 1/2 574 (600-1 1/2)	920-2 3/4 874 (900-2 3/4)

REIL Rwy 13, 31 and 36	
MIRL Rwy 13-31 and 18-36	
FAF to MAP 4.7 NM	
Knots	60 90 120 150 180
Min:Sec	4:42 3:08 2:21 1:53 1:34

SC-4, 19 MAR 2026 to 16 APR 2026

SC-4, 19 MAR 2026 to 16 APR 2026