

LOC/DME I-FLQ 110.3 Chan 40	APP CRS 176°	Rwy Ldg 13400 TDZE 562 Apt Elev 607
---	------------------------	--

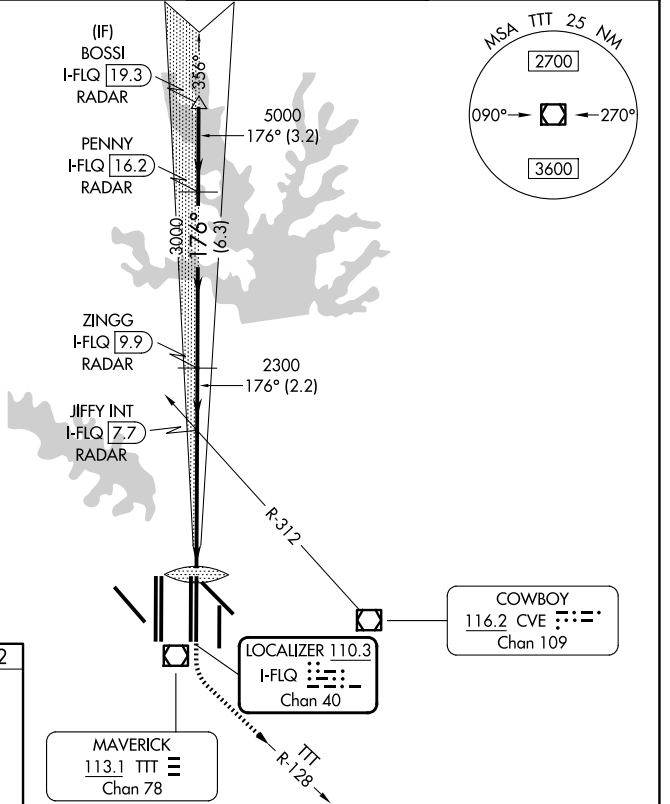
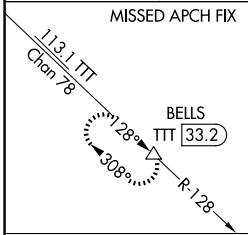
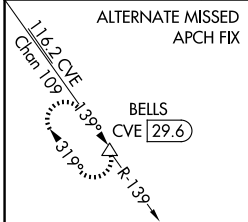
CONVERGING ILS RWY 17C

DALLAS-FORT WORTH INTL (DFW)

▼ DME or RADAR required.
Simultaneous approach authorized with Converging ILS Rwy 13R.

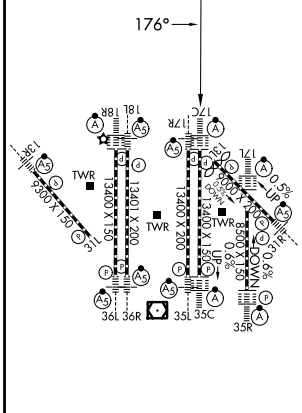
ALSF-2 MISSED APPROACH: Climb to 1300 then climbing left turn to 3000 on TTT VOR/DME R-128 to BELLS/TTT 33.2 DME and hold.

D-ATIS 123.775	LONE STAR APP CON 127.075	DFW TOWER 126.55 127.5 (E) 124.15 134.9 (W)	GND CON 121.65 121.8 (E) 121.85 (W)
--------------------------	-------------------------------------	---	---



RADAR REQUIRED

ELEV 607	D	TDZE 562
-----------------	----------	-----------------



HIRL all Rwys
REIL Rws 13L and 31L
TDZL/RCLS all Rws except 13L and 31L

1300	3000	BELLS	VGS1 and ILS glidepath not coincident (VGS1 Angle 3.00/TCH 74).		BOSSI I-FLQ 19.3
↑	TTT R-128	△	JIFFY INT I-FLQ 7.7	ZINGG I-FLQ 9.9	PENNY I-FLQ 16.2
			RADAR	RADAR	RADAR
			2300	3000	5000
			IM 654		176°
					GS 3.00° TCH 58
			0.1	5.2 NM	2.2 NM
				6.3 NM	3.2 NM
CATEGORY	A	B	C	D	
S-ILS 17C	762/18		200 (200-1/2)		

SC-2, 19 MAR 2026 to 16 APR 2026

SC-2, 19 MAR 2026 to 16 APR 2026