

LOC/DME I-PKQ <b>110.3</b> Chan 40	APP CRS <b>356°</b>	Rwy Ldg TDZE Apt Elev	<b>13400</b> <b>563</b> <b>607</b>
--	------------------------	-----------------------------	--

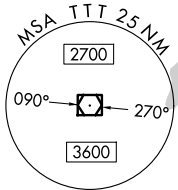
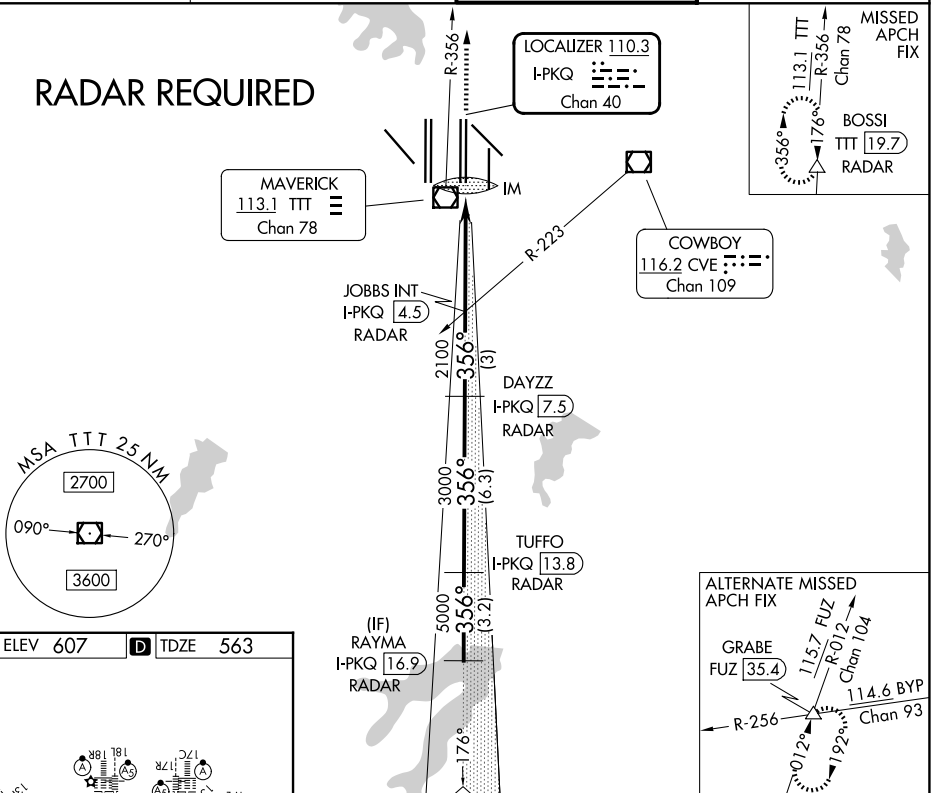
# CONVERGING ILS RWY 35C

DALLAS-FORT WORTH INTL (DFW)

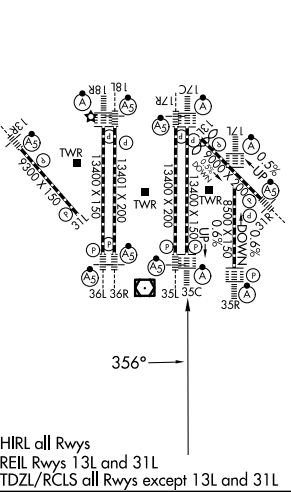
DME or RADAR required. Simultaneous approach authorized with Converging ILS Rwy 31R.	ALSF-2 	MISSED APPROACH: Climb to 3000 on TTT VOR/DME R-356 to BOSSI/TTT 19.7 DME/RADAR and hold.

D-ATIS <b>123.775</b>	LONE STAR APP CON <b>127.075</b>	DFW TOWER <b>126.55 127.5 (E)</b> <b>124.15 134.9 (W)</b>	GND CON <b>121.65 121.8 (E)</b> <b>121.85 (W)</b>
--------------------------	-------------------------------------	---	---

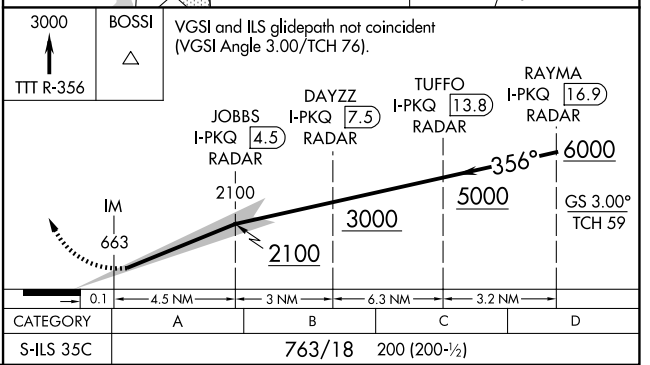
## RADAR REQUIRED



ELEV 607		TDZE 563
----------	--	----------



HIRL all Rws  
REIL Rws 13L and 31L  
TDZL/RCLS all Rws except 13L and 31L



CATEGORY	A	B	C	D
S-ILS 35C	763/18 200 (200-1/2)			

SC-2, 19 MAR 2026 to 16 APR 2026

SC-2, 19 MAR 2026 to 16 APR 2026