

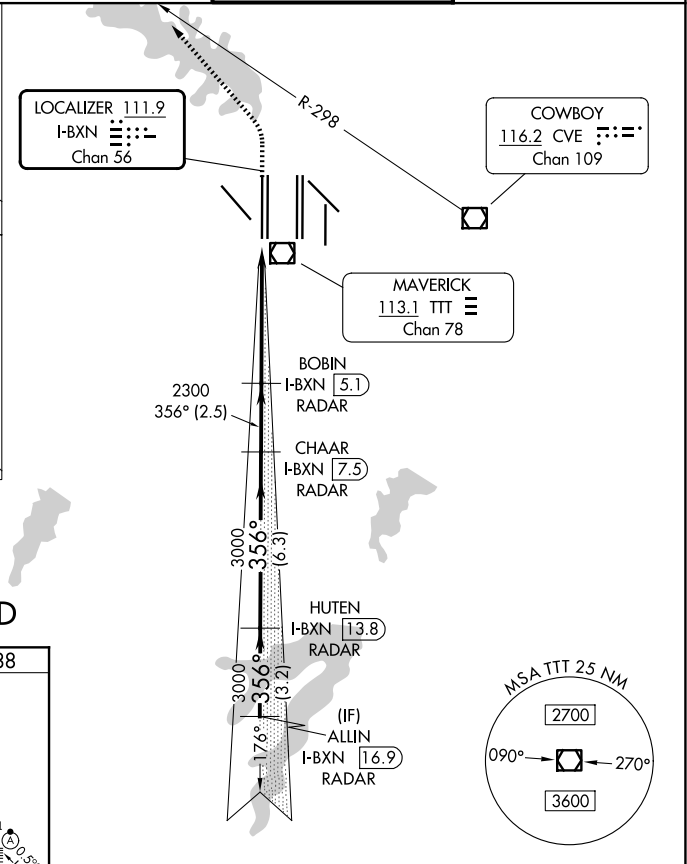
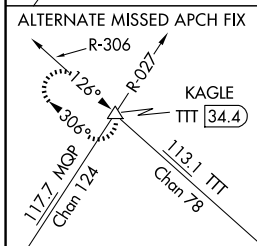
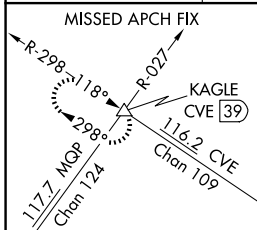
LOC/DME I-BXN <b>111.9</b> Chan <b>56</b>	APP CRS <b>356°</b>	Rwy Ldg TDZE Apt Elev <b>13400</b> <b>588</b> <b>607</b>
---	------------------------	---

# CONVERGING ILS RWY 36L

DALLAS-FORT WORTH INTL (DFW)

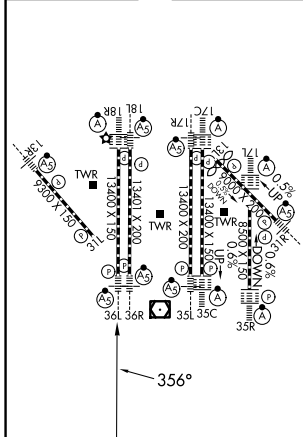
<b>▽</b> DME or RADAR required. Simultaneous approach authorized with CONVERGING ILS RWY 31R.	<b>MALSR</b> 	MISSED APPROACH: Climb to 1100 then climbing left turn to 3000 on heading 315° and CVE VOR/DME R-298 to KAGLE INT/CVE VOR/DME 39 DME and hold.
---	------------------	--

D-ATIS <b>123.775</b>	LONE STAR APP CON <b>118.425</b>	DFW TOWER <b>126.55 127.5 (E)</b> <b>124.15 134.9 (W)</b>	GND CON <b>121.65 121.8 (E)</b> <b>121.85 (W)</b>
--------------------------	-------------------------------------	---	---



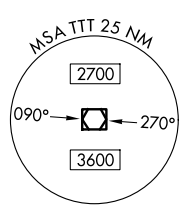
## RADAR REQUIRED

ELEV <b>607</b>	<b>D</b>	TDZE <b>588</b>
-----------------	----------	-----------------



HIRL all Rwys  
REIL Rwys 13L and 31L  
TDZL/RCLS all Rwys except 13L and 31L

1100	3000	CVE R-298	KAGLE	BOBIN I-BXN 5.1	CHAAR I-BXN 7.5	HUTEN I-BXN 13.8	ALLIN I-BXN 16.9
↑	hdg 315°		△	RADAR	RADAR	RADAR	RADAR
VGSi and ILS glidepath not coincident (VGSi Angle 3.00/TCH 72).				2300	3000	3000	4000
				5.2 NM	2.5 NM	6.3 NM	3.2 NM
CATEGORY				A	B	C	D
S-ILS 36L				788/18 200 (200-1/2)			



SC-2, 19 MAR 2026 to 16 APR 2026

SC-2, 19 MAR 2026 to 16 APR 2026