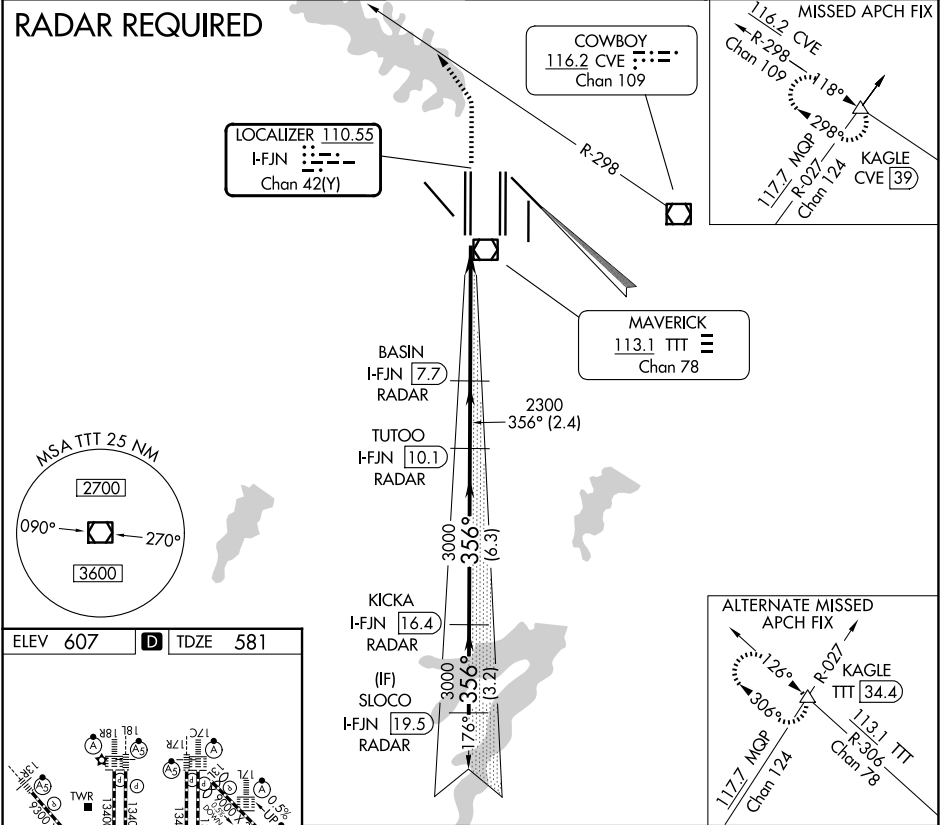


LOC/DME I-FJN 110.55 Chan 42 (Y)	APP CRS 356°	Rwy Ldg TDZE 13401 581	Apt Elev 607
--	------------------------	--	------------------------

CONVERGING ILS RWY 36R

DALLAS-FORT WORTH INTL (DFW)

<p>Simultaneous approach authorized with Converging ILS Rwy 31R. DME or Radar required.</p>		<p>MAISLR</p>	<p>MISSED APPROACH: Climb to 1100, then climbing left turn to 3000 on heading 320° and CVE VOR/DME R-298 to KAGLE INT/CVE 39 DME and hold.</p>
D-ATIS 123.775	LONE STAR APP CON 118.425	DFW TOWER 126.55 127.5 (E) 124.15 134.9 (W)	GND CON 121.65 121.8 (E) 121.85 (W)



ELEV 607	D	TDZE 581	
1100	3000	CVE R-298	KAGLE
hdg 320°			
		BASIN I-FJN 7.7 RADAR	TUTOO I-FJN 10.1 RADAR
		KICKA I-FJN 16.4 RADAR	SLOCO I-FJN 19.5 RADAR
		2300	3000
		3000	3000
		356°	4000
		GS 3.00° TCH 50	
		VGSI and ILS glidepath not coincident (VGSI Angle 3.00/TCH 66).	
		5.3 NM	2.4 NM
		6.3 NM	3.2 NM
CATEGORY	A	B	C
S-ILS 36R	781/18		200 (200-½)

SC-2, 19 MAR 2026 to 16 APR 2026

SC-2, 19 MAR 2026 to 16 APR 2026