

LOC/DME I-PPZ <b>111.75</b> Chan <b>54</b> (Y)	APP CRS <b>176°</b>	Rwy Ldg <b>8500</b> TDZE <b>545</b> Apt Elev <b>607</b>
--	------------------------	---

# ILS RWY 17L (SA CAT I)

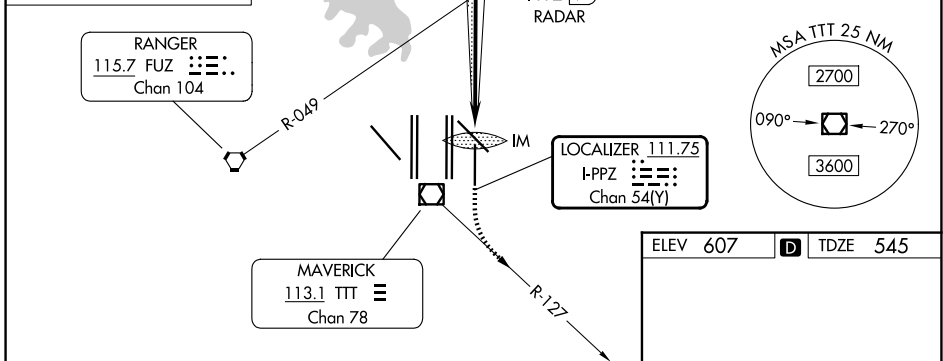
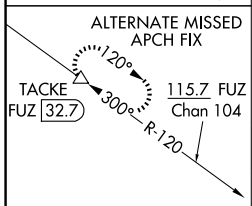
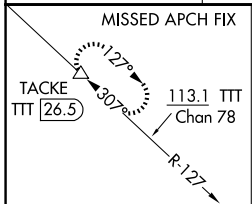
DALLAS-FORT WORTH INTL (DFW)

Simultaneous approach authorized with Rwy 17C/R and Rwy 18L/R. DME required. Requires specific OPSPEC, MSPEC, or LOA approval and use of HUD to DA.

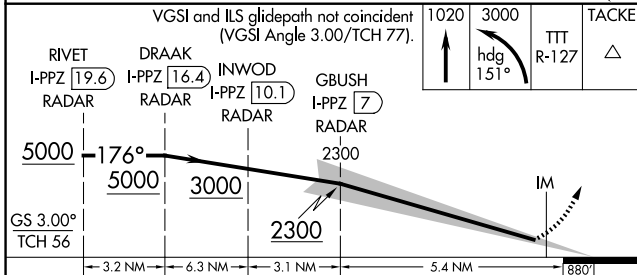
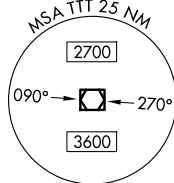
ALSF-2

MISSED APPROACH: Climb to 1020 then climbing left turn to 3000 on heading 151° and TTT VOR/DME R-127 to TACKE/TTT 26.5 DME and hold.

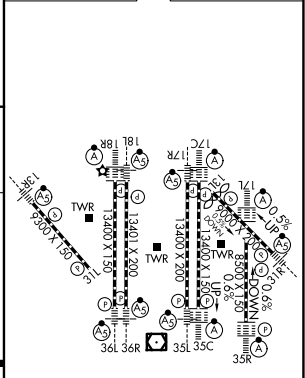
D-ATIS <b>123.775</b>	LONE STAR APP CON <b>119.4</b>	DFW TOWER <b>126.55</b> <b>127.5</b> (E) <b>124.15</b> <b>134.9</b> (W)	GND CON <b>121.65</b> <b>121.8</b> (E) <b>121.85</b> (W)
--------------------------	-----------------------------------	---	--



**RADAR REQUIRED**



ELEV 607	D	TDZE 545
----------	---	----------



CATEGORY	A	B	C	D
S-ILS 17L	RA 165/14 150 DA 695			
<b>SA CATEGORY I ILS - SPECIAL AIRCREW &amp; AIRCRAFT CERTIFICATION REQUIRED</b>				

HIRL all Rwys  
REIL Rwy 13L and 31L  
TDZL/RCLS all Rwys except 13L and 31L

SC-2, 19 MAR 2026 to 16 APR 2026

SC-2, 19 MAR 2026 to 16 APR 2026