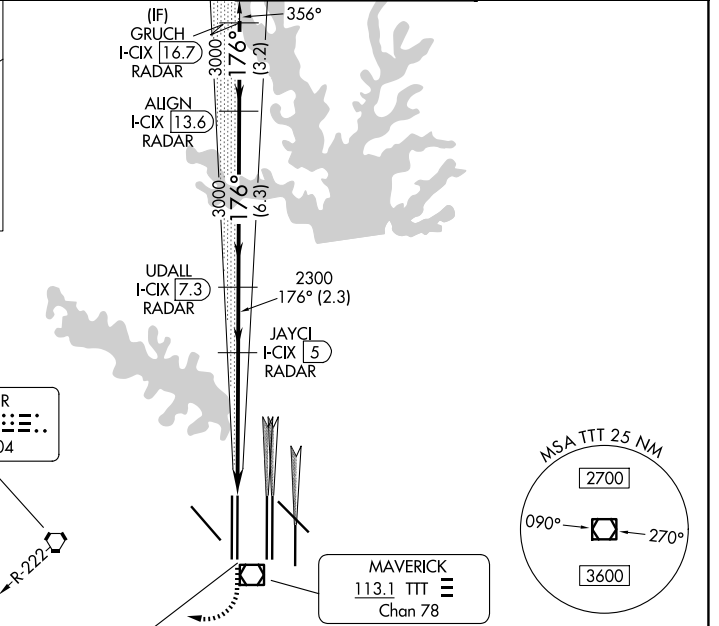
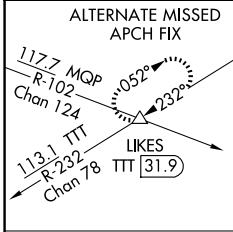


LOC/DME I-CIX 110.55 Chan 42(Y)	APP CRS 176°	Rwy Ldg TDZE Apt Elev 13401 602 606
---	------------------------	---

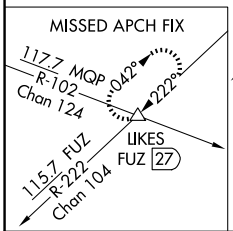
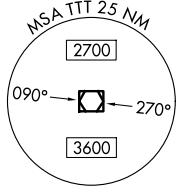
ILS RWY 18L (SA CAT I & II)

DALLAS-FORT WORTH INTL (DFW)

RADAR required for procedure entry. DME or RADAR required.		MALSR 	MISSED APPROACH: Climb to 1100, then climbing right turn to 3000 on heading 245° and FUZ VORTAC R-222 to LIKES INT/FUZ 27 DME and hold.	
D-ATIS 123.775	LONE STAR APP CON 118.425	DFW TOWER 126.55 127.5 (E) 124.15 134.9 (W)	GND CON 121.65 121.8 (E) 121.85 (W)	



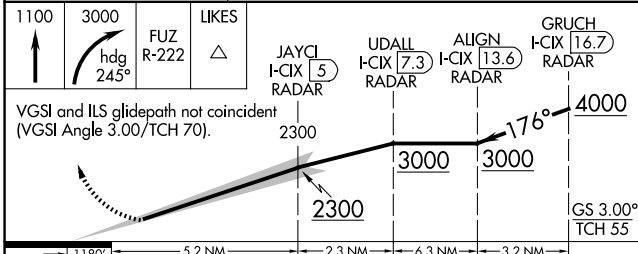
RANGER
115.7 FUZ
Chan 104



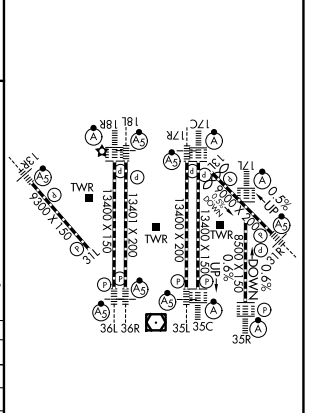
LOCALIZER 110.55
I-CIX
Chan 42(Y)

MAVERICK
113.1 TTT
Chan 78

ELEV 606	TDZE 602
----------	----------



↑ 1100	hdg 245°	FUZ R-222	LIKES	
VGS and ILS glidepath not coincident (VGS Angle 3.00/TCH 70).				
CATEGORY	A	B	C	D
S-ILS 18L	SA CAT I	RA 158/14	150 DA 752	
S-ILS 18L	SA CAT II	RA 115/12	100 DA 702	



SA CATEGORY I & II ILS - SPECIAL AIRCREW & AIRCRAFT CERTIFICATION REQUIRED

HIRL all Rwys
REIL Rws 13L and 31L
TDZL/RCLS all Rws except 13L and 31L

SC-2, 19 MAR 2026 to 16 APR 2026

SC-2, 19 MAR 2026 to 16 APR 2026