

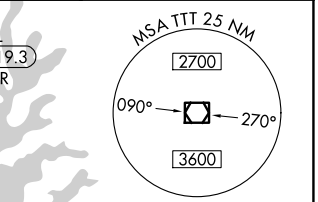
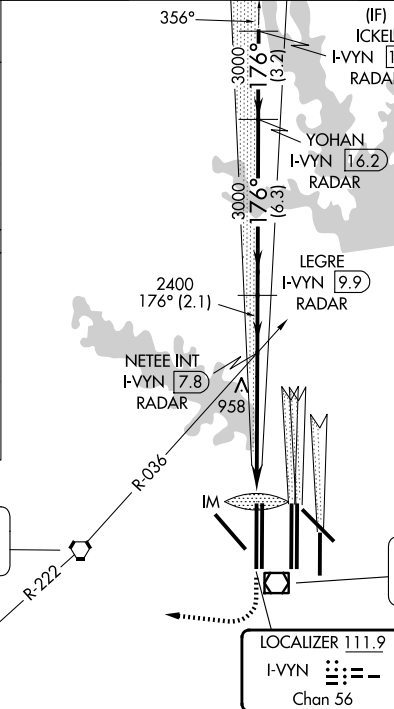
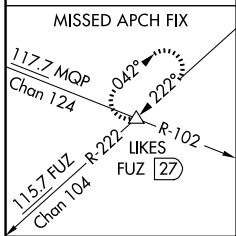
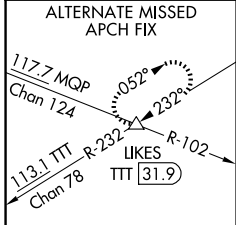
LOC/DME I-VYIN 111.9 Chan 56	APP CRS 176°	Rwy Ldg TDZE Apt Elev 13400 607 607
--	------------------------	---

ILS RWY 18R (CAT II & III)

DALLAS-FORT WORTH INTL (DFW)

⚠ DME or RADAR required. Simultaneous approach authorized with Rwy 17 L/C/R. **ALSF-2** MISSED APPROACH: Climb to 1100 then climbing right turn to 3000 on heading 250° and FUZ VORTAC R-222 to LIKES INT/FUZ VORTAC 27 DME and hold.

D-ATIS 123.775	LONE STAR APP CON 118.425	DFW TOWER 126.55 127.5 (E) 124.15 134.9 (W)	GND CON 121.65 121.8 (E) 121.85 (W)
--------------------------	-------------------------------------	---	---



RADAR REQUIRED

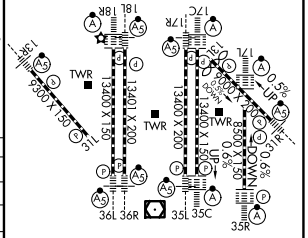
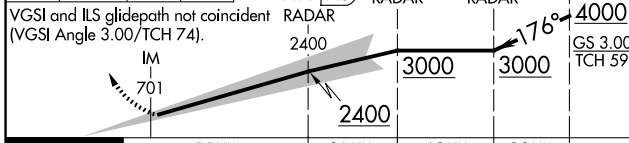
RANGER
115.7 FUZ
Chan 104

MAVERICK
113.1 TTT
Chan 78

LOCALIZER 111.9
I-VYIN
Chan 56

ELEV 607	D	TDZE 607
----------	----------	----------

1100	3000	FUZ R-222	LIKES	ICKEL I-VYIN 19.3 RADAR
hdg 250°				NETEE INT I-VYIN 7.8 RADAR
				LEGRE I-VYIN 9.9 RADAR
				YOHAN I-VYIN 16.2 RADAR



CATEGORY	A	B	C	D
S-ILS 18R		CAT II RA 106/12 100 DA 707		
S-ILS 18R		CAT IIIa RVR 07		
S-ILS 18R		CAT IIIb RVR 06		
S-ILS 18R		CAT IIIc NA		

CATEGORY II & III ILS - SPECIAL AIRCREW & AIRCRAFT CERTIFICATION REQUIRED

HIRL all Rwys
REIL Rwys 13L and 31L
TDZL/RCLS all Rwys except 13L and 31L

SC-2, 19 MAR 2026 to 16 APR 2026

SC-2, 19 MAR 2026 to 16 APR 2026