

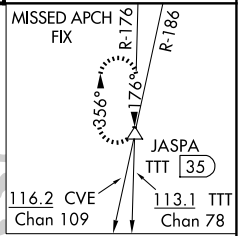
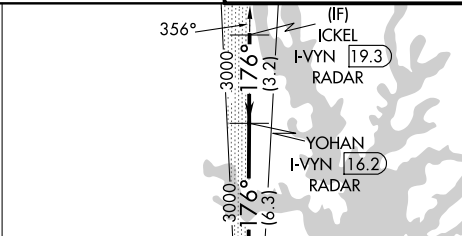
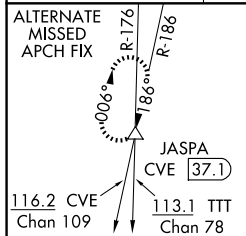
LOC/DME I-VYVN <b>111.9</b> Chan 56	APP CRS <b>176°</b>	Rwy Ldg <b>13400</b> TDZE <b>607</b> Apt Elev <b>607</b>
---	------------------------	--

# ILS RWY 18R (CONVERGING)

DALLAS-FORT WORTH INTL (DFW)

DME and RADAR required.	ALSF-2	MISSED APPROACH: Climb to 3000 then climb to 4000 on heading 170° and TTT VOR/DME R-176 to JASPA/TTT 35 DME and hold.
Simultaneous approach authorized with CONVERGING ILS RWY 13R, CONVERGING ILS RWY 17C, and CONVERGING ILS 17R.		

D-ATIS <b>123.775</b>	LONE STAR APP CON <b>118.425</b>	DFW TOWER <b>126.55 127.5 (E)</b> <b>124.15 134.9 (W)</b>	GND CON <b>121.65 121.8 (E)</b> <b>121.85 (W)</b>
--------------------------	-------------------------------------	---	---



RANGER  
115.7 FUZ  
Chan 104

LOCALIZER 111.9  
I-VYVN  
Chan 56

MAVERICK  
113.1 TTT  
Chan 78

MSA TTT 25 NM

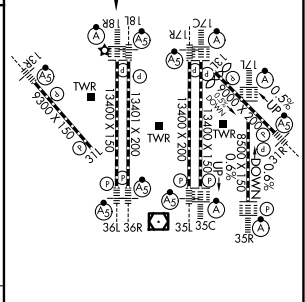
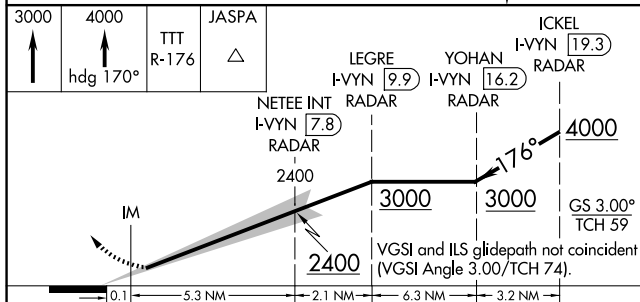
2700  
3600

090° 270°

SC-2, 19 MAR 2026 to 16 APR 2026

SC-2, 19 MAR 2026 to 16 APR 2026

ELEV 607	<b>D</b>	TDZE 607
----------	----------	----------



CATEGORY	A	B	C	D
S-ILS 18R	807/18 200 (200-1/2)			

HIRL all Rwys  
REIL Rwy 13L and 31L  
TDZL/RCLS all Rwys except 13L and 31L