

LOC/DME I-RRA 110.9 Chan 46	APP CRS 311°	Rwy Ldg TDZE 523 Apt Elev 607
---	------------------------	---

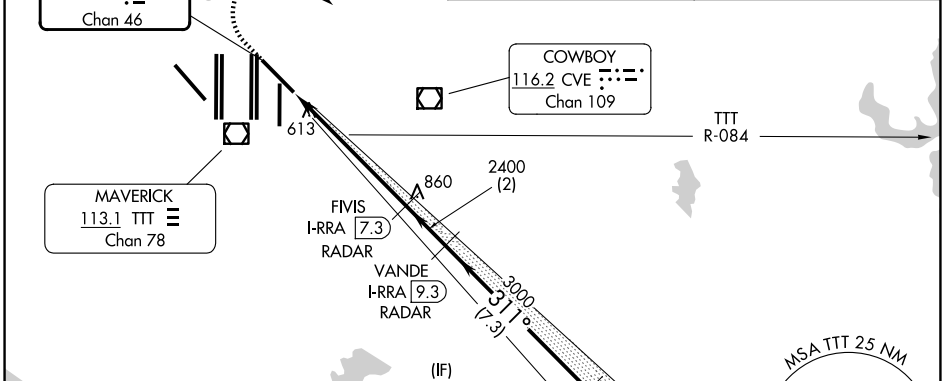
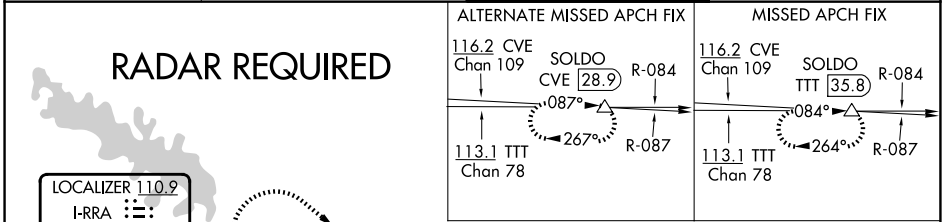
ILS RWY 31R (SA CAT I & CAT II)

DALLAS-FORT WORTH INTL (DFW)

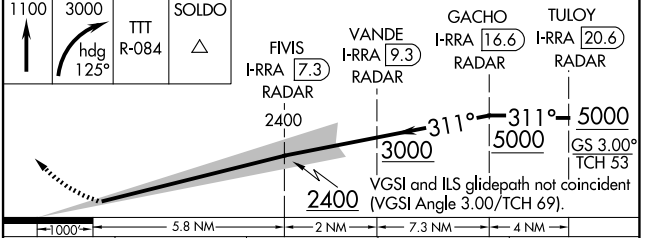
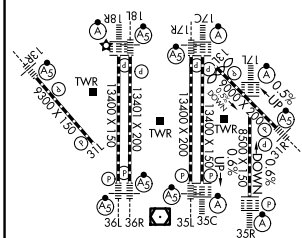
Simultaneous approach authorized. DME required.
SA Cat I: Requires specific OPSPEC, MSPEC, or LOA approval and use of HUD to DH. SA Cat II: Reduced lighting: Requires specific OPSPEC, MSPEC, or LOA approval and use of autoland or HUD to touchdown.

MALSRS
MISSED APPROACH: Climb to 1100 then climbing right turn to 3000 on heading 125° and TTT VOR/DME R-084 to SOLDO/TTT 35.8 DME and hold.

D-ATIS 123.775	LONE STAR APP CON 135.5 125.2	DFW TOWER 126.55 127.5 (E) 124.15 134.9 (W)	GND CON 121.65 121.8 (E) 121.85 (W)
--------------------------	---	---	---



ELEV 607	D TDZE 523
-----------------	--------------------------



CATEGORY	A	B	C	D
S-ILS 31R	SA CAT I	RA 176/14	150 DA 673	
S-ILS 31R	SA CAT II	RA 121/12	100 DA 623	

SA CATEGORY I & II ILS SPECIAL AIRCREW & AIRCRAFT CERTIFICATION REQUIRED

HIRL all Rwys
REIL Rwy 13L and 31L
TDZL/RCLS all Rwy except 13L and 31L

SC-2, 19 MAR 2026 to 16 APR 2026

SC-2, 19 MAR 2026 to 16 APR 2026