

LOC/DME I-AJQ 111.75 Chan 54(Y)	APP CRS 356°	Rwy Ldg TDZE Apt Elev 8500 575 607
--	------------------------	--

ILS RWY 35R (CAT II & III)

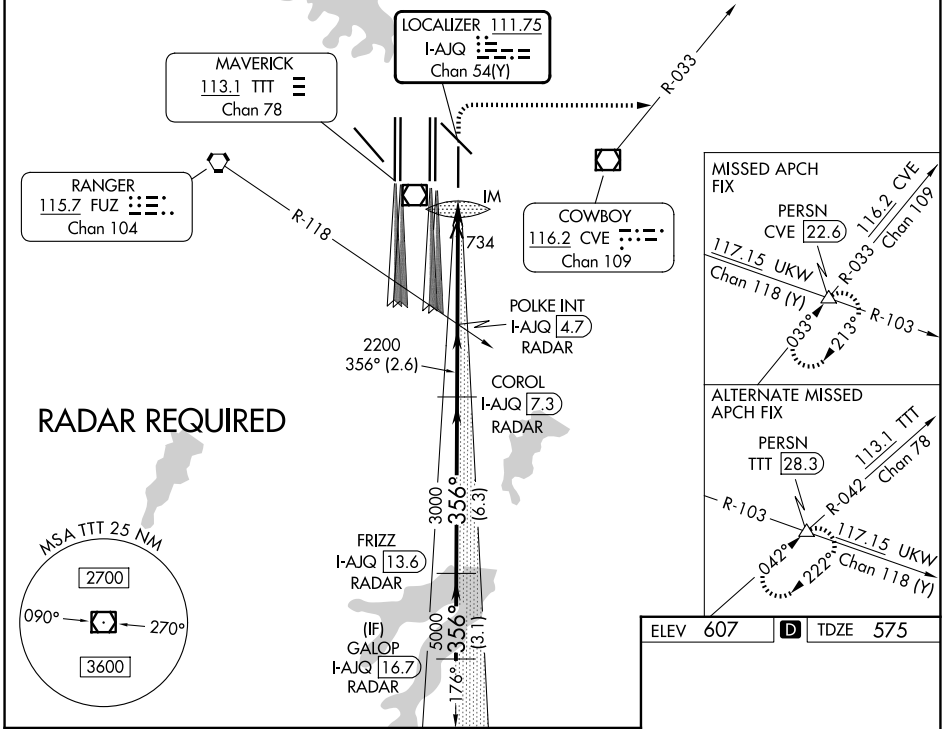
DALLAS-FORT WORTH INTL (DFW)

Simultaneous approach authorized with Rwy 36L/R and Rwy 35L/C.

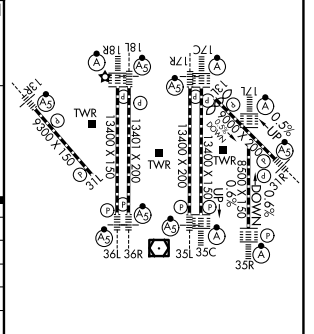
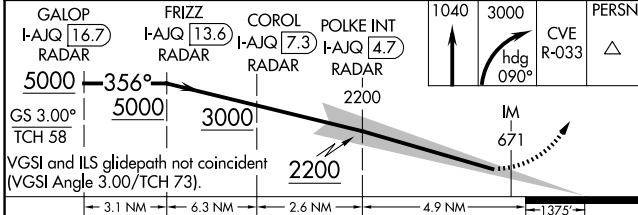
ALSF-2

MISSED APPROACH: Climb to 1040 then climbing right turn to 3000 on heading 090° and CVE VOR/DME R-033 to PERSN/CVE 22.6 DME and hold.

D-ATIS 123.775	LONE STAR APP CON 119.4	DFW TOWER 126.55 127.5 (E) 124.15 134.9 (W)	GND CON 121.65 121.8 (E) 121.85 (W)
--------------------------	-----------------------------------	---	---



ELEV 607	TDZE 575
----------	----------



CATEGORY	A	B	C	D
S-ILS 35R		CAT II RA 94/12	100 DA 675	
S-ILS 35R		CAT IIIa	RVR 07	
S-ILS 35R		CAT IIIb	RVR 06	
S-ILS 35R		CAT IIIc	NA	

CATEGORY II & III ILS - SPECIAL AIRCREW & AIRCRAFT CERTIFICATION REQUIRED

SC-2, 19 MAR 2026 to 16 APR 2026

SC-2, 19 MAR 2026 to 16 APR 2026