

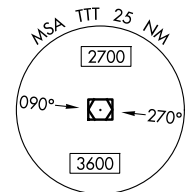
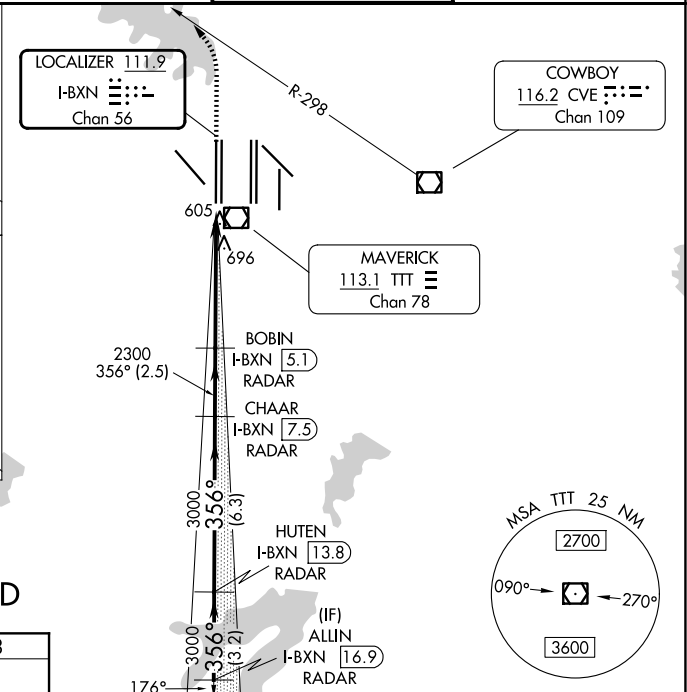
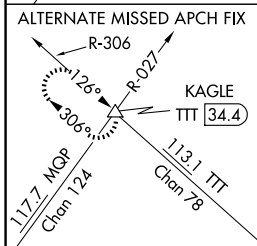
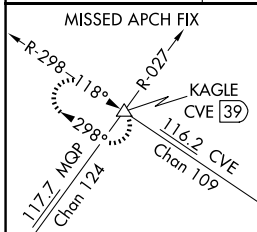
LOC/DME I-BXN <b>111.9</b> Chan <b>56</b>	APP CRS <b>356°</b>	Rwy Ldg <b>13400</b> TDZE <b>588</b> Apt Elev <b>606</b>
---	------------------------	--

# ILS RWY 36L (SA CAT II)

DALLAS-FORT WORTH INTL (DFW)

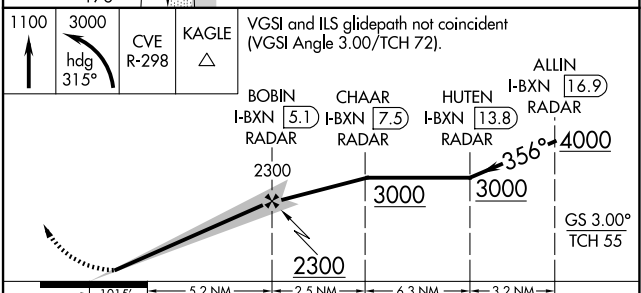
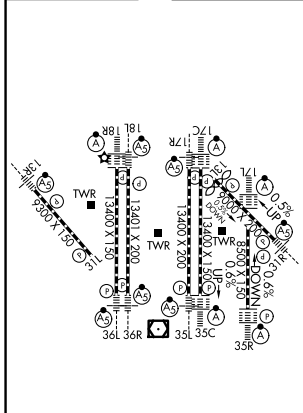
<b>▼</b> DME or RADAR required. Reduced Lighting: Requires specific OPSPEC, MSPEC, or LOA approval and use of autoland or HUD to touchdown.	MALSR 	MISSED APPROACH: Climb to 1100 then climbing left turn to 3000 on heading 315° and CVE R-298 to KAGLE INT/ CVE VOR/DME 39 DME and hold.
--	-----------	---

D-ATIS <b>123.775</b>	LONE STAR APP CON <b>118.425</b>	DFW TOWER <b>126.55 127.5 (E)</b> <b>124.15 134.9 (W)</b>	GND CON <b>121.65 121.8 (E)</b> <b>121.85 (W)</b>
--------------------------	-------------------------------------	---	---



## RADAR REQUIRED

ELEV <b>606</b>	<b>D</b>	TDZE <b>588</b>
-----------------	----------	-----------------



CATEGORY	A	B	C	D
S-ILS 36L	RA 107/12 100 DA 688			

## SA CATEGORY II ILS - SPECIAL AIRCREW & AIRCRAFT CERTIFICATION REQUIRED

SC-2, 19 MAR 2026 to 16 APR 2026

SC-2, 19 MAR 2026 to 16 APR 2026