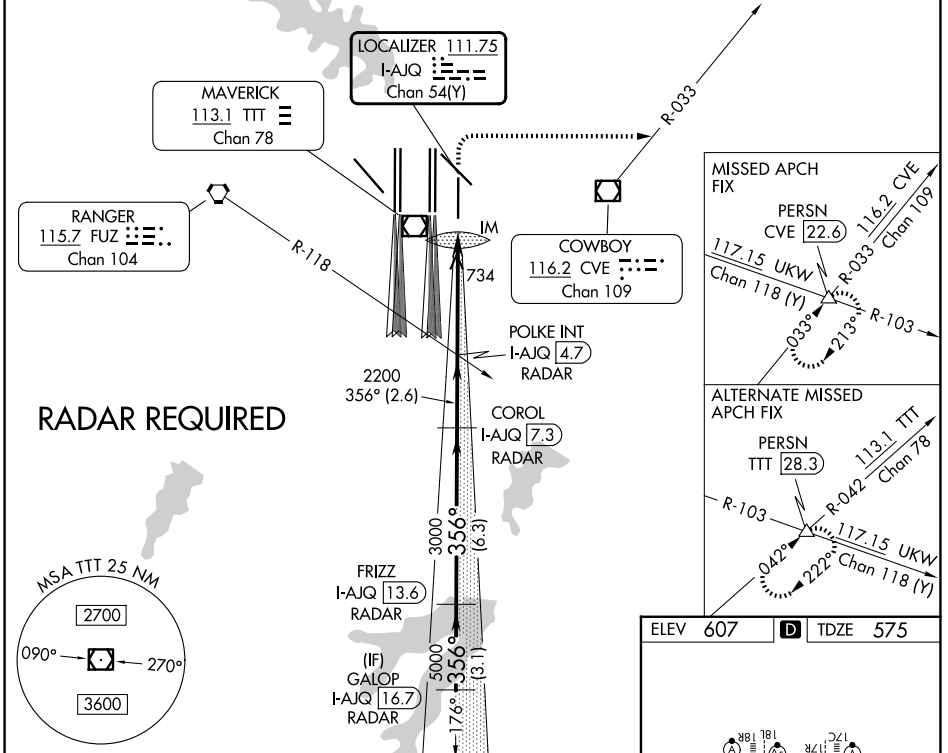


LOC/DME I-AJQ 111.75 Chan 54(Y)	APP CRS 356°	Rwy Ldg TDZE Apt Elev 8500 575 607
--	------------------------	--

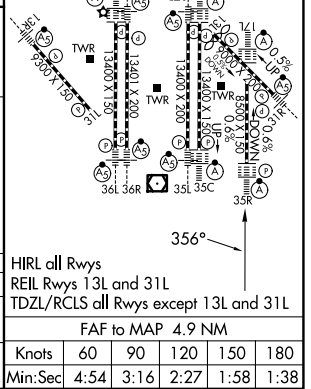
ILS or LOC RWY 35R

DALLAS-FORT WORTH INTL (DFW)

▼ Simultaneous approach authorized with Rwy 36L/R and Rwy 35L/C. DME required.	ALSF-2 		MISSED APPROACH: Climb to 1040 then climbing right turn to 3000 on heading 090° and CVE VOR/DME R-033 to PERSN/CVE 22.6 DME and hold.	
	D-ATIS 123.775	LONE STAR APP CON 119.4	DFW TOWER 126.55 127.5 (E) 124.15 134.9 (W)	GND CON 121.65 121.8 (E) 121.85 (W)



GALOP I-AJQ 16.7 RADAR	FRIZZ I-AJQ 13.6 RADAR	COROL I-AJQ 7.3 RADAR	POLKE INT I-AJQ 4.7 RADAR	1040 3000	CVE R-033	PERSN
5000 — 356° — 5000 — 3000 — 2200				*I-AJQ (1.1) I-AJQ DME ANTENNA IM I-AJQ (0.2) *LOC only		
GS 3.00° TCH 58 VGSi and ILS glidepath not coincident (VGSi Angle 3.00/TCH 73). 3.1 NM 6.3 NM 2.6 NM 3.7 NM 1.1 0.1						
CATEGORY	A	B	C	D		
S-ILS 35R	775/18 200 (200-½)					
S-LOC 35R	1040/24	465 (500-½)	1040/50	465 (500-1)		



SC-2, 19 MAR 2026 to 16 APR 2026

SC-2, 19 MAR 2026 to 16 APR 2026