

LOC/DME I-FJN 110.55 Chan 42 (Y)	APP CRS 356°	Rwy Ldg 36R 36L TDZE 581 588 Apt Elev 607 607
---	------------------------	--

ILS or LOC RWY 36R

DALLAS-FORT WORTH INTL (DFW)

Simultaneous approach authorized with Rwy 35L/C/R. Inop table does not apply to Sidestep 36L Cats A and B. DME or RADAR required.



MISSED APPROACH: Climb to 1100, then climbing left turn to 3000 on heading 320° and CVE VOR/DME R-298 to KAGLE INT/CVE 39 DME and hold.

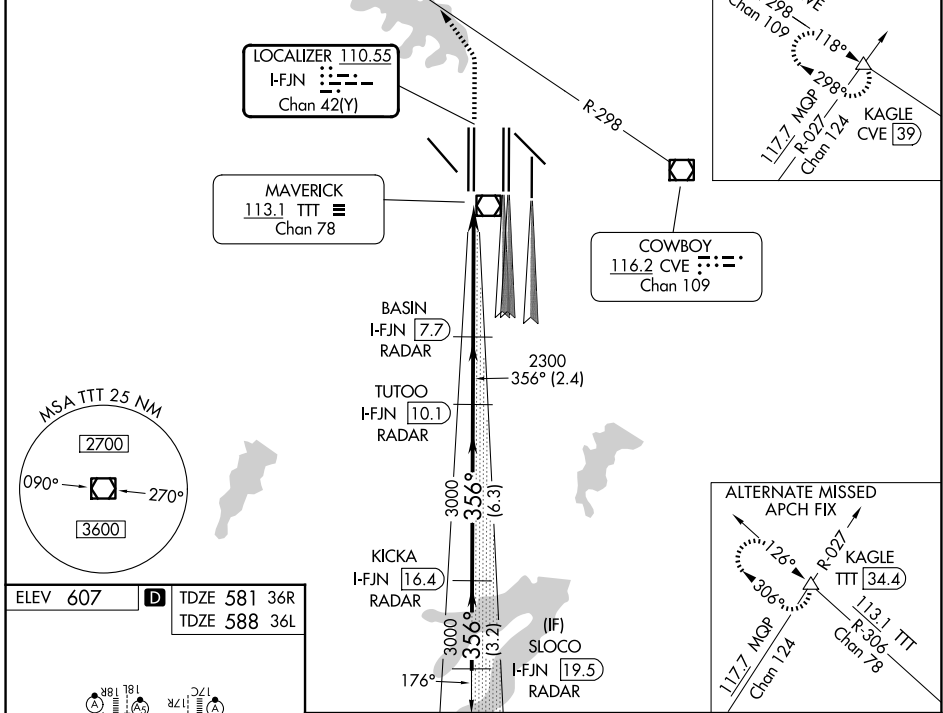
D-ATIS
123.775

LONE STAR APP CON
118.425

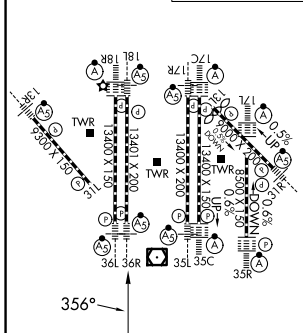
DFW TOWER
126.55 127.5 (E)
124.15 134.9 (W)

GND CON
121.65 121.8 (E)
121.85 (W)

RADAR REQUIRED



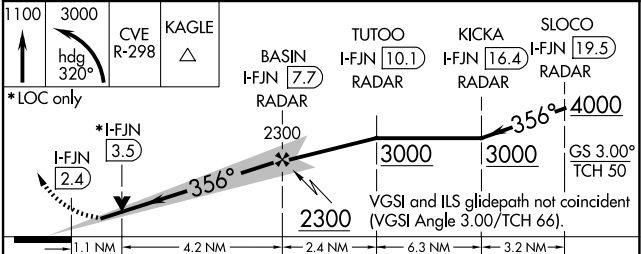
ELEV 607	D	TDZE 581 36R
		TDZE 588 36L



HIRL all Rws
REIL Rws 13L and 31L
TDZL/RCLS all Rws except 13L and 31L

FAF to MAP 5.3 NM

Knots	60	90	120	150	180
Min:Sec	5:18	3:32	2:39	2:07	1:46



CATEGORY	A	B	C	D
S-ILS 36R	781/18 200 (200-1/2)			
S-LOC 36R	1000/24	419 (400-1/2)	1000/40	419 (400-3/4)
SIDESTEP 36L	1080/50 492 (500-1)			1080-1 1/2 492 (500-1 1/2)

SC-2, 19 MAR 2026 to 16 APR 2026

SC-2, 19 MAR 2026 to 16 APR 2026