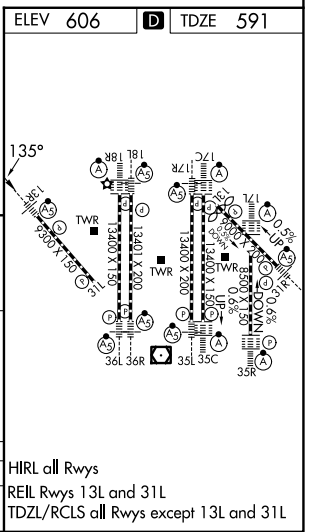
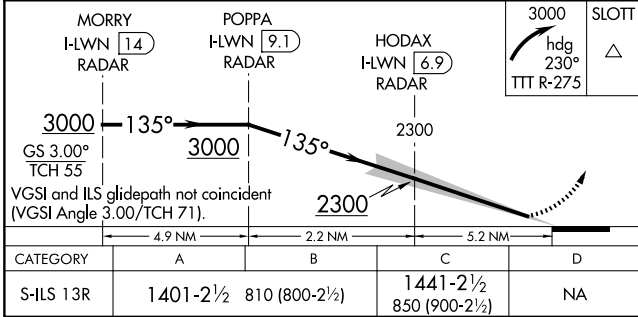
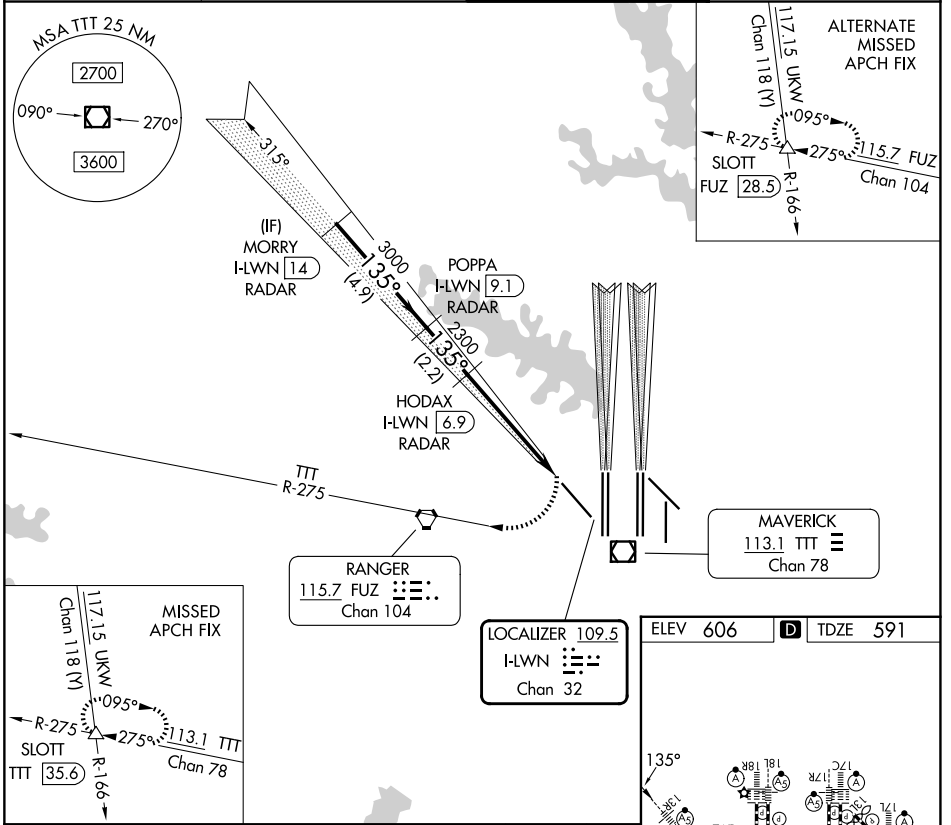


LOC/DME I-LWN 109.5 Chan 32	APP CRS 135°	Rwy Ldg 9300 TDZE 591 Apt Elev 606
---	------------------------	---

ILS V RWY 13R (CONVERGING)

DALLAS-FORT WORTH INTL (DFW)

RADAR required for procedure entry.		MALSR 	MISSED APPROACH: Climbing right turn to 3000 on heading 230° and TTT VOR/DME R-275 to SLOTT/TTT 35.6 DME and hold.	
⚠ Simultaneous converging approach authorized with ⚠ Converging ILS Rwy 18L/R and Converging ILS Rwy 17C/R. For inop ALS, increase S-ILS 13R all Cats visibility to 2¼.	DFW TOWER 126.55 127.5 (E) 124.15 134.9 (W)	GND CON 121.65 121.8 (E) 121.85 (W)		
D-ATIS 123.775	LONE STAR APP CON 133.15 118.1			



SC-2, 19 MAR 2026 to 16 APR 2026

SC-2, 19 MAR 2026 to 16 APR 2026