

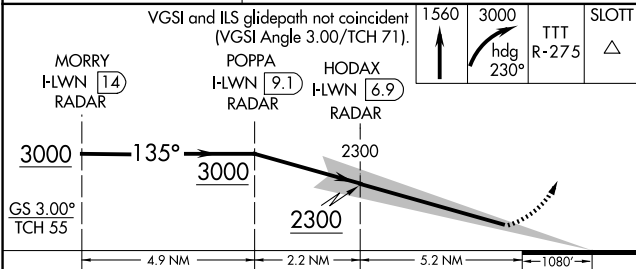
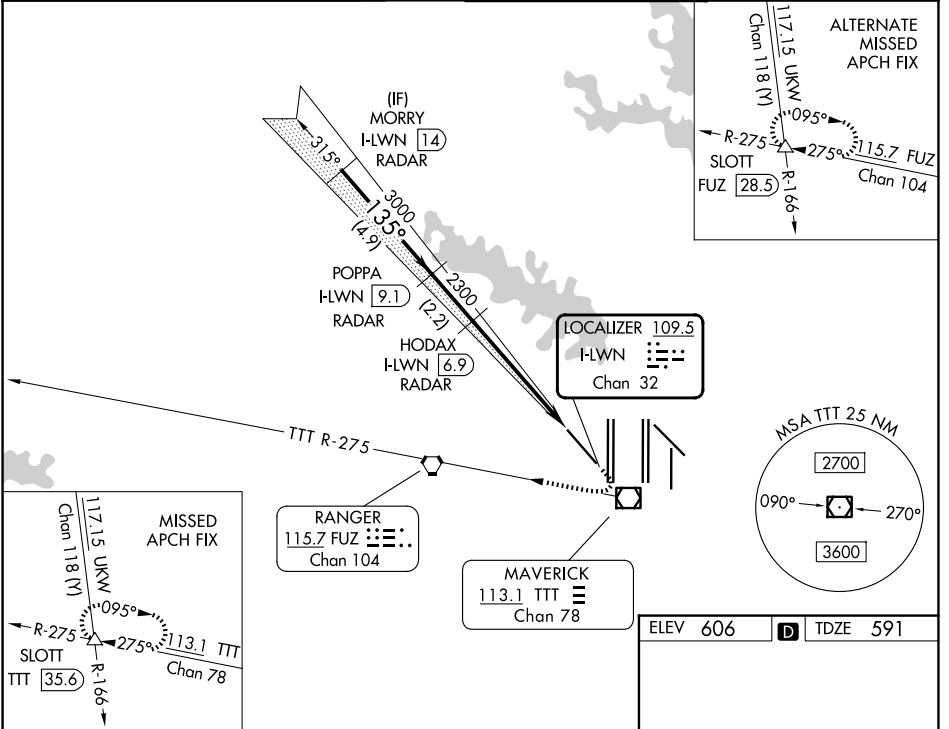
LOC/DME I-LWN 109.5 Chan 32	APP CRS 135°	Rwy Ldg 9300 TDZE 591 Apt Elev 606
---	------------------------	---

ILS Z RWY 13R (SA CAT I & II)

DALLAS-FORT WORTH INTL (DFW)

RADAR required for procedure entry.		MALSR 	MISSED APPROACH: Climb to 1560 then climbing right turn to 3000 on heading 230° and TTT VOR/DME R-275 to SLOTT INT/TTT 35.6 DME and hold.
-------------------------------------	--	-----------	---

D-ATIS 123.775	LONE STAR APP CON 133.15 118.1	DFW TOWER 126.55 127.5 (E) 124.15 134.9 (W)	GND CON 121.65 121.8 (E) 121.85 (W)
--------------------------	--	---	---



CATEGORY	A	B	C	D
S-ILS 13R	SA CAT I	RA 149/14	150 DA 741	
S-ILS 13R	SA CAT II	RA 99/12	100 DA 691	

ELEV 606	D	TDZE 591
----------	----------	----------

