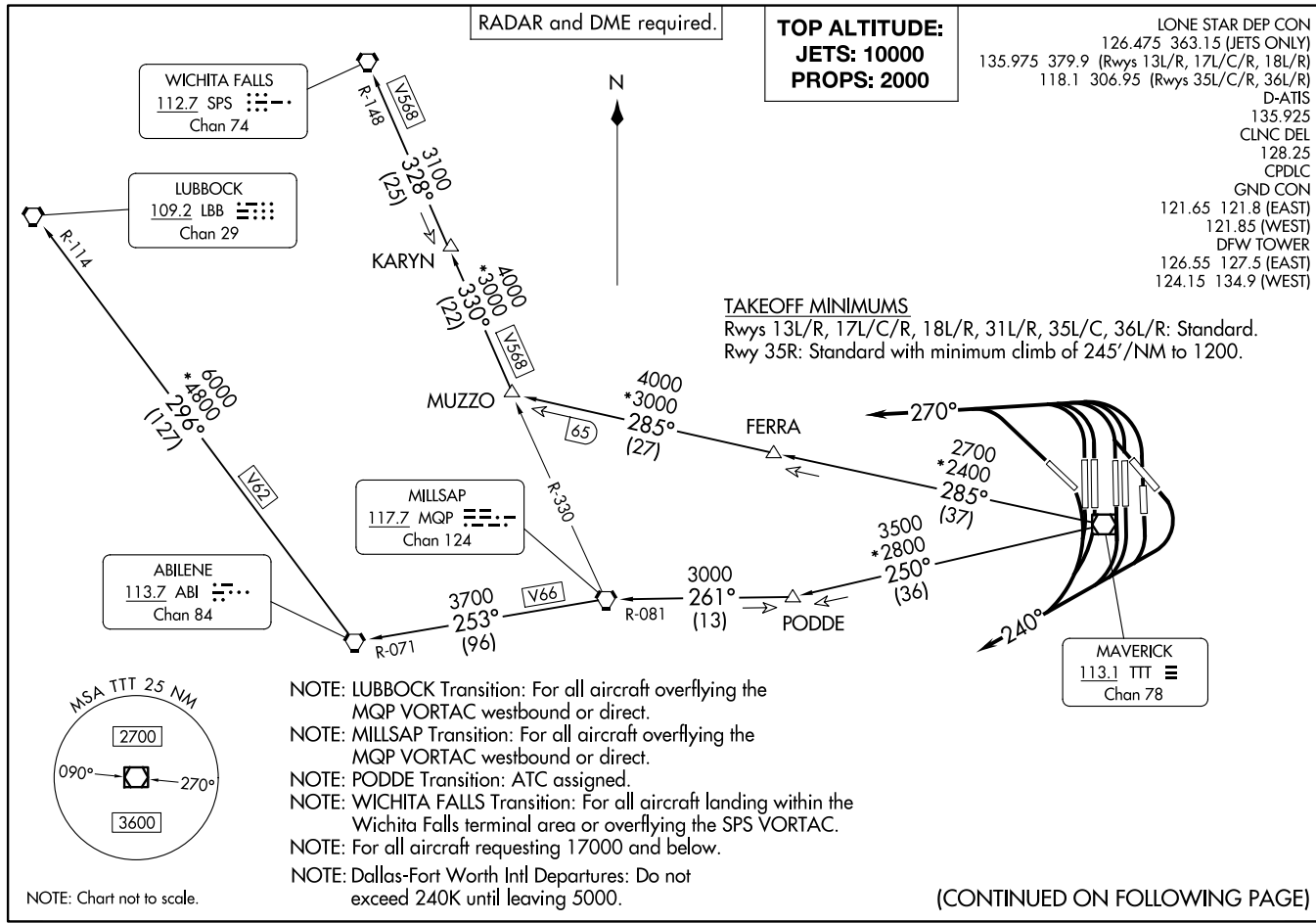


KINGDOM FIVE DEPARTURE
(KING5.TTT) 17AR25

DALLAS-FORT WORTH, TEXAS
DALLAS-FORT WORTH INTL (DFW)

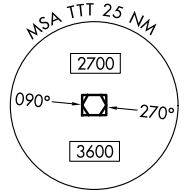


(CONTINUED ON FOLLOWING PAGE)

(KING5.TTT) 25107
KINGDOM FIVE DEPARTURE

AL-6039 (FAA)
DALLAS-FORT WORTH INTL (DFW)
DALLAS-FORT WORTH, TEXAS

LONE STAR DEP CON
126.475 363.15 (JETS ONLY)
135.975 379.9 (Rwys 13L/R, 17L/C/R, 18L/R)
118.1 306.95 (Rwys 35L/C/R, 36L/R)
D-ATIS
135.925
CLNC DEL
128.25
CPDLC
GND CON
121.65 121.8 (EAST)
121.85 (WEST)
DFW TOWER
126.55 127.5 (EAST)
124.15 134.9 (WEST)



KINGDOM FIVE DEPARTURE



DEPARTURE ROUTE DESCRIPTION

JETS

TAKEOFF RUNWAYS 13L/R, 17L/C/R, 18L/R, 31L/R, 35L/C/R, 36L/R: Climb on assigned heading for RADAR vectors to appropriate route, thence. . .

. . .maintain 10000 and expect filed altitude 10 minutes after departure.

PROPS

TAKEOFF RUNWAYS 13L/R, 17L/C/R, 18L/R: Climb on heading 240° then on assigned heading for RADAR vectors to appropriate route, thence. . .

TAKEOFF RUNWAYS 31L/R, 35L/C/R, 36L/R: Climb on heading 270° then on assigned heading for RADAR vectors to appropriate route, thence. . .

. . .maintain 2000 and expect filed altitude 10 minutes after departure.

LUBBOCK TRANSITION (KING5.LBB): From over TTT VOR/DME on TTT R-250 to PODDE, then on MQP R-081 to MQP VORTAC, then on MQP R-253 and ABI R-071 to ABI VORTAC, then on ABI R-296 and LBB R-114 to LBB VORTAC.

MILLSAP TRANSITION (KING5.MQP): From over TTT VOR/DME on TTT R-250 to PODDE, then on MQP R-081 to MQP VORTAC.

PODDE TRANSITION (KING5.PODDE): From over TTT VOR/DME on TTT R-250 to PODDE.

WICHITA FALLS TRANSITION (KING5.SPS): From over TTT VOR/DME on TTT R-285 to MUZZO, then on MQP R-330 and SPS R-148 to KARYN, then on SPS R-148 to SPS VORTAC.

SC-2, 19 MAR 2026 to 16 APR 2026

SC-2, 19 MAR 2026 to 16 APR 2026